

## ARG63846 anti-BAALC antibody

Package: 100 µg  
Store at: -20°C

### Summary

Product Description	Goat Polyclonal antibody recognizes BAALC
Tested Reactivity	Hu, Ms
Predict Reactivity	Pig, Rat
Tested Application	WB
Specificity	This antibody is expected to recognise isoform 1 (NP_079088.1) only.
Host	Goat
Clonality	Polyclonal
Isotype	IgG
Target Name	BAALC
Species	Human
Immunogen	C-KQNGQLQTTEAKRDAK
Conjugation	Un-conjugated
Alternate Names	Brain and acute leukemia cytoplasmic protein

### Application Instructions

Application table	Application	Dilution
	WB	0.03 - 0.1 µg/ml
Application Note	WB: Recommend incubate at RT for 1h. * The dilutions indicate recommended starting dilutions and the optimal dilutions or concentrations should be determined by the scientist.	

### Properties

Form	Liquid
Purification	Purified from goat serum by antigen affinity chromatography.
Buffer	Tris saline (pH 7.3), 0.02% Sodium azide and 0.5% BSA.
Preservative	0.02% Sodium azide
Stabilizer	0.5% BSA
Concentration	0.5 mg/ml
Storage instruction	For continuous use, store undiluted antibody at 2-8°C for up to a week. For long-term storage, aliquot and store at -20°C or below. Storage in frost free freezers is not recommended. Avoid repeated freeze/thaw cycles. Suggest spin the vial prior to opening. The antibody solution should be gently mixed before use.

Bioinformation

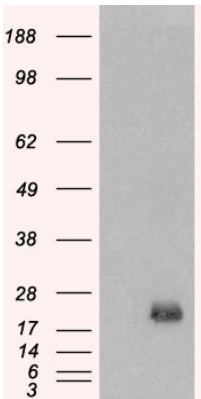
Database links	<a href="#">GeneID: 118452 Mouse</a> <a href="#">GeneID: 79870 Human</a> <a href="#">Swiss-port # Q8VHV1 Mouse</a> <a href="#">Swiss-port # Q8WXS3 Human</a>
Background	This gene was identified by gene expression studies in patients with acute myeloid leukemia (AML). The gene is conserved among mammals and is not found in lower organisms. Tissues that express this gene develop from the neuroectoderm. Multiple alternatively spliced transcript variants that encode different proteins have been described for this gene; however, some of the transcript variants are found only in AML cell lines. [provided by RefSeq, Jul 2008]
Research Area	Cell Biology and Cellular Response antibody; Neuroscience antibody
Calculated Mw	19 kDa
PTM	Palmitoylation and myristoylation target the protein to the lipid rafts.

Images



ARG63846 anti-BAALC antibody WB image

Western Blot: mouse brain lysate (35 µg protein in RIPA buffer) stained with ARG63846 anti-BAALC antibody at 0.03 µg/ml dilution.



ARG63846 anti-BAALC antibody WB image

Western Blot: 1). Mock transfection; 2) BAALC (RC203701) expressing plasmid transfected HEK293 cell lysate stained with ARG63846 anti-BAALC antibody