

ARG63864 anti-FZD8 / Frizzled 8 antibody

Package: 100 µg
Store at: -20°C

Summary

Product Description	Goat Polyclonal antibody recognizes FZD8 / Frizzled 8
Tested Reactivity	Hu
Predict Reactivity	Ms, Rat, Cow, Dog
Tested Application	ICC/IF, IHC-P, WB
Host	Goat
Clonality	Polyclonal
Isotype	IgG
Target Name	FZD8 / Frizzled 8
Species	Human
Immunogen	C-SYPKQMPLSQV
Conjugation	Un-conjugated
Alternate Names	Fz-8; Frizzled-8; FZ-8; hFZ8; hFz8

Application Instructions

Application table	Application	Dilution
	ICC/IF	Assay - dependent
	IHC-P	3 µg/ml
	WB	1 - 3 µg/ml
Application Note	IHC-P: Antigen Retrieval: Microwaved tissue section in Tris/EDTA buffer (pH 9.0). WB: Recommend incubate at RT for 1h. * The dilutions indicate recommended starting dilutions and the optimal dilutions or concentrations should be determined by the scientist.	

Properties

Form	Liquid
Purification	Purified from goat serum by antigen affinity chromatography.
Buffer	Tris saline (pH 7.3), 0.02% Sodium azide and 0.5% BSA.
Preservative	0.02% Sodium azide
Stabilizer	0.5% BSA
Concentration	0.5 mg/ml
Storage instruction	For continuous use, store undiluted antibody at 2-8°C for up to a week. For long-term storage, aliquot and store at -20°C or below. Storage in frost free freezers is not recommended. Avoid repeated freeze/thaw cycles. Suggest spin the vial prior to opening. The antibody solution should be gently mixed

before use.

Note

For laboratory research only, not for drug, diagnostic or other use.

Bioinformation

Database links

[GeneID: 8325 Human](#)

[Swiss-port # Q9H461 Human](#)

Background

This intronless gene is a member of the frizzled gene family. Members of this family encode seven-transmembrane domain proteins that are receptors for the Wingless type MMTV integration site family of signaling proteins. Most frizzled receptors are coupled to the beta-catenin canonical signaling pathway. This gene is highly expressed in two human cancer cell lines, indicating that it may play a role in several types of cancer. The crystal structure of the extracellular cysteine-rich domain of a similar mouse protein has been determined. [provided by RefSeq, Jul 2008]

Research Area

Cancer antibody; Developmental Biology antibody; Signaling Transduction antibody

Calculated Mw

73 kDa

PTM

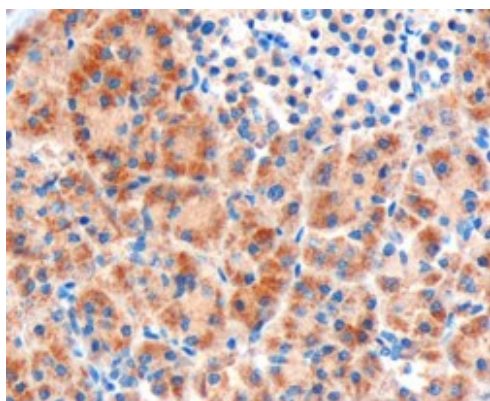
Ubiquitinated by ZNRF3, leading to its degradation by the proteasome.

Images



ARG63864 anti-FZD8 / Frizzled 8 antibody WB image

Western blot: Human pancreas lysate (35 µg protein in RIPA buffer) stained with ARG63864 anti-FZD8 / Frizzled 8 antibody at 1 µg/ml dilution.



ARG63864 anti-FZD8 / Frizzled 8 antibody IHC-P image

Immunohistochemistry: Paraffin embedded Human Pancreas. (Microwaved antigen retrieval with Tris/EDTA buffer pH9) stained with ARG63864 anti-FZD8 / Frizzled 8 antibody at 3 µg/ml dilution followed by HRP-staining.