

ARG63884 anti-Cyclophilin A antibody

Package: 100 µg
Store at: -20°C

Summary

Product Description	Goat Polyclonal antibody recognizes Cyclophilin A
Tested Reactivity	Hu
Predict Reactivity	Ms, Rat, Cow, Dog, Pig
Tested Application	WB
Specificity	This product is expected to also recognise PPIAL (NP_001008741.1, GeneID: 388817) which is identical to PPIA (NP_066953.1).
Host	Goat
Clonality	Polyclonal
Isotype	IgG
Target Name	Cyclophilin A
Species	Human
Immunogen	C-ERFGSRNGKTSKK
Conjugation	Un-conjugated
Alternate Names	CYPA; Cyclosporin A-binding protein; PPIase A; CYPH; Cyclophilin A; HEL-S-69p; EC 5.2.1.8; Rotamase A; Peptidyl-prolyl cis-trans isomerase A

Application Instructions

Application table	Application	Dilution
	WB	0.1 - 0.3 µg/ml

Application Note WB: Recommend incubate at RT for 1h.
* The dilutions indicate recommended starting dilutions and the optimal dilutions or concentrations should be determined by the scientist.

Properties

Form	Liquid
Purification	Purified from goat serum by antigen affinity chromatography.
Buffer	Tris saline (pH 7.3), 0.02% Sodium azide and 0.5% BSA.
Preservative	0.02% Sodium azide
Stabilizer	0.5% BSA
Concentration	0.5 mg/ml
Storage instruction	For continuous use, store undiluted antibody at 2-8°C for up to a week. For long-term storage, aliquot and store at -20°C or below. Storage in frost free freezers is not recommended. Avoid repeated freeze/thaw cycles. Suggest spin the vial prior to opening. The antibody solution should be gently mixed

before use.

Note

For laboratory research only, not for drug, diagnostic or other use.

Bioinformation

Database links

[GeneID: 5478 Human](#)

[Swiss-port # P62937 Human](#)

Background

This gene encodes a member of the peptidyl-prolyl cis-trans isomerase (PPIase) family. PPIases catalyze the cis-trans isomerization of proline imidic peptide bonds in oligopeptides and accelerate the folding of proteins. The encoded protein is a cyclosporin binding-protein and may play a role in cyclosporin A-mediated immunosuppression. The protein can also interact with several HIV proteins, including p55 gag, Vpr, and capsid protein, and has been shown to be necessary for the formation of infectious HIV virions. Multiple pseudogenes that map to different chromosomes have been reported. [provided by RefSeq, Jul 2008]

Research Area

Immune System antibody; Signaling Transduction antibody

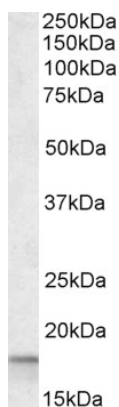
Calculated Mw

18 kDa

PTM

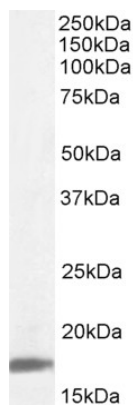
Acetylation at Lys-125 markedly inhibits catalysis of cis to trans isomerization and stabilizes cis rather than trans forms of the HIV-1 capsid. PPIA acetylation also antagonizes the immunosuppressive effects of cyclosporine by inhibiting the sequential steps of cyclosporine binding and calcineurin inhibition.

Images



ARG63884 anti-Cyclophilin A antibody WB image

Western blot: 35 µg of Human Lymph lysate stained with ARG63884 anti-Cyclophilin A antibody at 0.1 µg/ml dilution.



ARG63884 anti-Cyclophilin A antibody WB image

Western blot: 35 µg of Human lymph node lysate (in RIPA buffer) stained with ARG63884 anti-Cyclophilin A antibody at 0.1 µg/ml dilution and incubated at RT for 1 hour.