

ARG63918 anti-CCKBR antibody

Package: 100 µg
Store at: -20°C

Summary

Product Description	Goat Polyclonal antibody recognizes CCKBR
Tested Reactivity	Hu, Ms, Rat
Predict Reactivity	Cow
Tested Application	IHC-P, WB
Host	Goat
Clonality	Polyclonal
Isotype	IgG
Target Name	CCKBR
Species	Human
Immunogen	C-FDGDSDSDSQSRVRNQ
Conjugation	Un-conjugated
Alternate Names	CCK-BR; CCK2-R; Cholecystokinin-2 receptor; CCK2R; CCK-B; Gastrin/cholecystokinin type B receptor; CCK-B receptor; GASR

Application Instructions

Application table	Application	Dilution
	IHC-P	5 - 6 µg/ml
	WB	1 - 3 µg/ml
Application Note	WB: Recommend incubate at RT for 1h. IHC-P: Antigen Retrieval: Heat mediation was performed in Citrate buffer (pH 6.0). * The dilutions indicate recommended starting dilutions and the optimal dilutions or concentrations should be determined by the scientist.	

Properties

Form	Liquid
Purification	Purified from goat serum by antigen affinity chromatography.
Buffer	Tris saline (pH 7.3), 0.02% Sodium azide and 0.5% BSA.
Preservative	0.02% Sodium azide
Stabilizer	0.5% BSA
Concentration	0.5 mg/ml
Storage instruction	For continuous use, store undiluted antibody at 2-8°C for up to a week. For long-term storage, aliquot and store at -20°C or below. Storage in frost free freezers is not recommended. Avoid repeated freeze/thaw cycles. Suggest spin the vial prior to opening. The antibody solution should be gently mixed

before use.

Note

For laboratory research only, not for drug, diagnostic or other use.

Bioinformation

Background

This gene encodes a G-protein coupled receptor for gastrin and cholecystokinin (CCK), regulatory peptides of the brain and gastrointestinal tract. This protein is a type B gastrin receptor, which has a high affinity for both sulfated and nonsulfated CCK analogs and is found principally in the central nervous system and the gastrointestinal tract. A misspliced transcript variant including an intron has been observed in cells from colorectal and pancreatic tumors. [provided by RefSeq, Jul 2008]

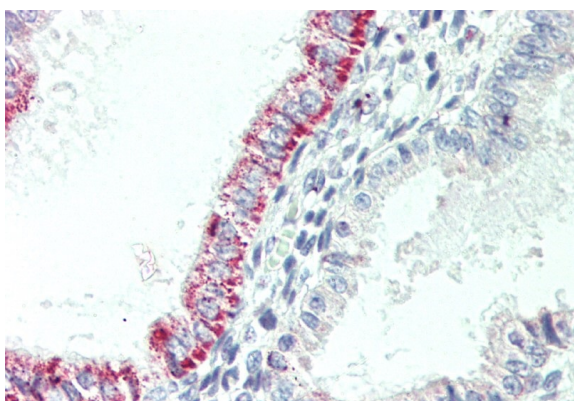
Research Area

Metabolism antibody; Neuroscience antibody

Calculated Mw

48 kDa

Images



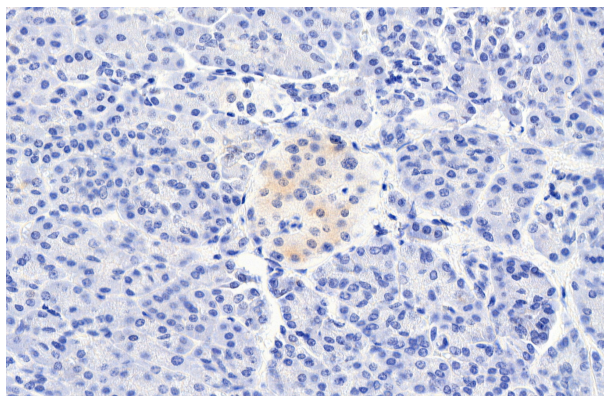
ARG63918 anti-CCKBR antibody IHC-P image

Immunohistochemistry: Paraffin-embedded Human uterus tissue. Antigen Retrieval: Steam tissue section in Citrate buffer (pH 6.0). The tissue section was stained with ARG63918 anti-CCKBR antibody at 5 µg/ml dilution followed by AP-staining.



ARG63918 anti-CCKBR antibody WB image

Western blot: 35 µg of Mouse pancreas (A) and Rat stomach (B) lysates (in RIPA buffer) stained with ARG63918 anti-CCKBR antibody at 1 µg/ml dilution and incubated at RT for 1 hour.



ARG63918 anti-CCKBR antibody IHC-P image

Immunohistochemistry: Paraffin-embedded Human pancreas tissue. Antigen Retrieval: Heat mediation was performed in Citrate buffer (pH 6.0). The tissue section was stained with ARG63918 anti-CCKBR antibody at 6 µg/ml dilution followed by HRP-staining.