

ARG63935 anti-TSC1 / Hamartin antibody

Package: 100 µg
Store at: -20°C

Summary

Product Description	Goat Polyclonal antibody recognizes TSC1 / Hamartin
Tested Reactivity	Hu
Predict Reactivity	Ms, Rat, Dog
Tested Application	IHC-P, WB
Specificity	This antibody is expected to recognise isoform 1 (NP_000359.1) only.
Host	Goat
Clonality	Polyclonal
Isotype	IgG
Target Name	TSC1 / Hamartin
Species	Human
Immunogen	C-QLHIMDYNETHHEH
Conjugation	Un-conjugated
Alternate Names	LAM; Tuberous sclerosis 1 protein; Hamartin; TSC

Application Instructions

Application table	Application	Dilution
	IHC-P	3 - 5 µg/ml
	WB	0.1 - 0.3 µg/ml
Application Note	WB: Recommend incubate at RT for 1h. IHC-P: Antigen Retrieval: Steam tissue section in Citrate buffer (pH 6.0). * The dilutions indicate recommended starting dilutions and the optimal dilutions or concentrations should be determined by the scientist.	

Properties

Form	Liquid
Purification	Purified from goat serum by antigen affinity chromatography.
Buffer	Tris saline (pH 7.3), 0.02% Sodium azide and 0.5% BSA.
Preservative	0.02% Sodium azide
Stabilizer	0.5% BSA
Concentration	0.5 mg/ml
Storage instruction	For continuous use, store undiluted antibody at 2-8°C for up to a week. For long-term storage, aliquot and store at -20°C or below. Storage in frost free freezers is not recommended. Avoid repeated freeze/thaw cycles. Suggest spin the vial prior to opening. The antibody solution should be gently mixed

before use.

Note

For laboratory research only, not for drug, diagnostic or other use.

Bioinformation

Database links

[GeneID: 7248 Human](#)

[Swiss-port # Q92574 Human](#)

Background

This gene encodes a growth inhibitory protein thought to play a role in the stabilization of tuberin. Mutations in this gene have been associated with tuberous sclerosis. Alternative splicing results in multiple transcript variants. [provided by RefSeq, Jun 2009]

Research Area

Cancer antibody; Cell Biology and Cellular Response antibody; Gene Regulation antibody; Metabolism antibody

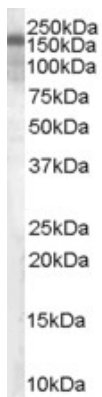
Calculated Mw

130 kDa

PTM

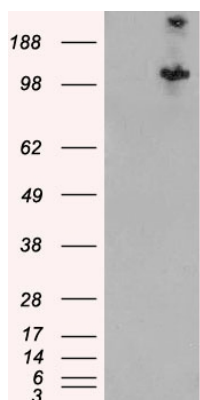
Phosphorylation at Ser-505 does not affect interaction with TSC2.

Images



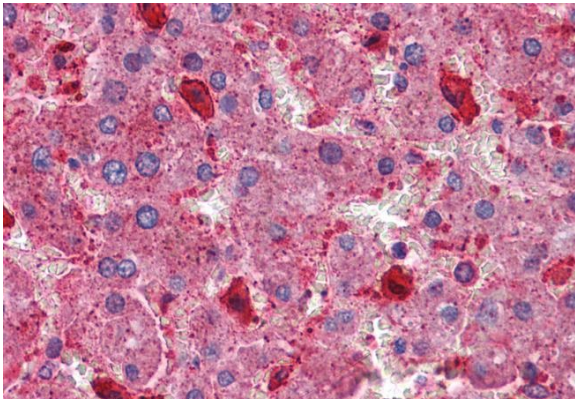
ARG63935 anti-TSC1 / Hamartin antibody WB image

Western blot: Human Brain lysate (35 µg protein in RIPA buffer) stained with ARG63935 anti-TSC1 / Hamartin antibody at 0.1 µg/ml dilution.



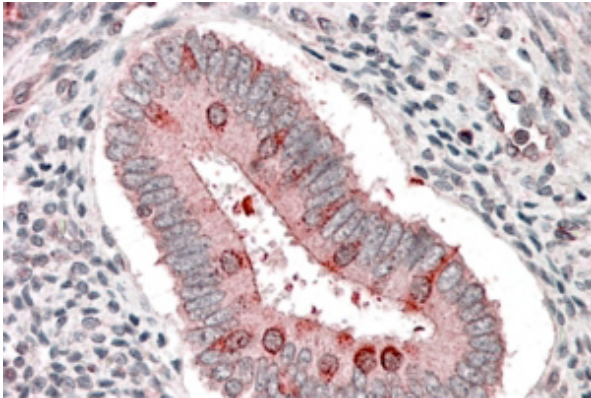
ARG63935 anti-TSC1 / Hamartin antibody WB image

Western blot: 1). Mock transfection; 2) Human TSC1 (RC213332) expressing plasmid transfected HEK293 cell lysate stained with ARG63935 anti-TSC1 / Hamartin antibody.



ARG63935 anti-TSC1 / Hamartin antibody IHC-P image

Immunohistochemistry: Paraffin-embedded Human liver tissue.
Antigen Retrieval: Steam tissue section in Citrate buffer (pH 6.0). The tissue section was stained with ARG63935 anti-TSC1 / Hamartin antibody at 3.75 µg/ml dilution followed by AP-staining.



ARG63935 anti-TSC1 / Hamartin antibody IHC-P image

Immunohistochemistry: Paraffin embedded Human Uterus.
(Steamed antigen retrieval with citrate buffer pH 6) stained with ARG63935 anti-TSC1 / Hamartin antibody at 3.8 µg/ml dilution followed by AP-staining.