

ARG63947 anti-PRODH antibody

Package: 100 µg
Store at: -20°C

Summary

Product Description	Goat Polyclonal antibody recognizes PRODH
Tested Reactivity	Hu
Predict Reactivity	Ms
Tested Application	IHC-P, WB
Host	Goat
Clonality	Polyclonal
Isotype	IgG
Target Name	PRODH
Species	Human
Immunogen	C-ERDGS GTNKRDKQYQ
Conjugation	Un-conjugated
Alternate Names	TP53I6; Proline oxidase 2; POX; EC 1.5.5.2; PRODH1; PRODH2; HSPOX2; p53-induced gene 6 protein; PIG6; Proline dehydrogenase 1, mitochondrial; Proline oxidase

Application Instructions

Application table	Application	Dilution
	IHC-P	3 - 5 µg/ml
	WB	Assay - dependent
Application Note	WB: Recommend incubate at RT for 1h. IHC-P: Antigen Retrieval: Steam tissue section in Citrate buffer (pH 6.0). * The dilutions indicate recommended starting dilutions and the optimal dilutions or concentrations should be determined by the scientist.	

Properties

Form	Liquid
Purification	Purified from goat serum by antigen affinity chromatography.
Buffer	Tris saline (pH 7.3), 0.02% Sodium azide and 0.5% BSA.
Preservative	0.02% Sodium azide
Stabilizer	0.5% BSA
Concentration	0.5 mg/ml
Storage instruction	For continuous use, store undiluted antibody at 2-8°C for up to a week. For long-term storage, aliquot and store at -20°C or below. Storage in frost free freezers is not recommended. Avoid repeated freeze/thaw cycles. Suggest spin the vial prior to opening. The antibody solution should be gently mixed

before use.

Note

For laboratory research only, not for drug, diagnostic or other use.

Bioinformation

Database links

[GeneID: 5625 Human](#)

[Swiss-port # O43272 Human](#)

Background

This gene encodes a mitochondrial protein that catalyzes the first step in proline degradation. Mutations in this gene are associated with hyperprolinemia type 1 and susceptibility to schizophrenia 4 (SCZD4). This gene is located on chromosome 22q11.21, a region which has also been associated with the contiguous gene deletion syndromes, DiGeorge and CATCH22. Alternatively spliced transcript variants encoding different isoforms have been found for this gene. [provided by RefSeq, Aug 2010]

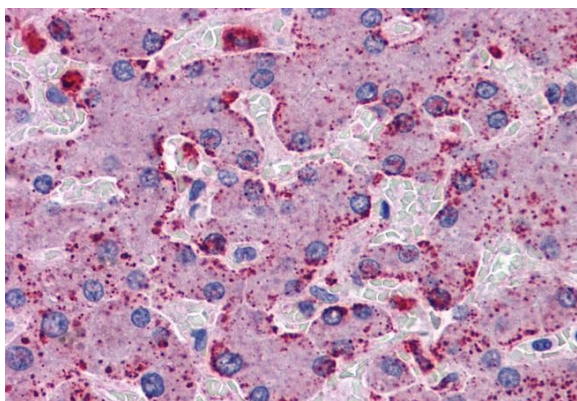
Research Area

Cancer antibody; Cell Biology and Cellular Response antibody; Cell Death antibody; Metabolism antibody; Signaling Transduction antibody

Calculated Mw

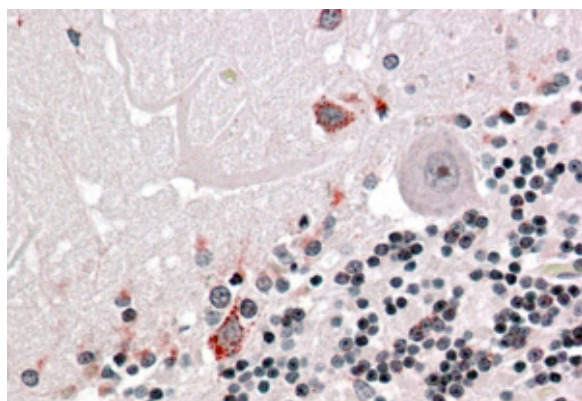
68 kDa

Images



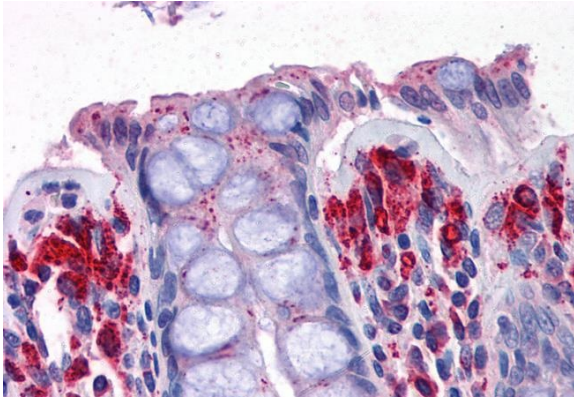
ARG63947 anti-PRODH antibody IHC-P image

Immunohistochemistry: Paraffin-embedded Human liver tissue. Antigen Retrieval: Steam tissue section in Citrate buffer (pH 6.0). The tissue section was stained with ARG63947 anti-PRODH antibody at 3.75 µg/ml dilution followed by AP-staining.



ARG63947 anti-PRODH antibody IHC-P image

Immunohistochemistry: paraffin embedded Human Cerebellum. (Steamed antigen retrieval with citrate buffer pH 6) stained with ARG63947 anti-PRODH antibody at 3.8 µg/ml dilution followed by AP-staining.



ARG63947 anti-PROD H antibody IHC-P image

Immunohistochemistry: Paraffin-embedded Human colon tissue.
Antigen Retrieval: Steam tissue section in Citrate buffer (pH 6.0). The tissue section was stained with ARG63947 anti-PROD H antibody at 3.75 $\mu\text{g}/\text{ml}$ dilution followed by AP-staining.