

## ARG63953 anti-alpha Catenin antibody

Package: 100 µg  
Store at: -20°C

### Summary

Product Description	Goat Polyclonal antibody recognizes alpha Catenin
Tested Reactivity	Hu
Predict Reactivity	Ms, Rat, Dog
Tested Application	IHC-P, WB
Host	Goat
Clonality	Polyclonal
Isotype	IgG
Target Name	alpha Catenin
Species	Human
Immunogen	C-KREKQDETQTKIK
Conjugation	Un-conjugated
Alternate Names	Catenin alpha-1; Renal carcinoma antigen NY-REN-13; Cadherin-associated protein; CAP102; Alpha E-catenin

### Application Instructions

Application table	Application	Dilution
	IHC-P	3 - 5 µg/ml
	WB	1 - 3 µg/ml
Application Note	WB: Recommend incubate at RT for 1h. IHC-P: Antigen Retrieval: Steam tissue section in Citrate buffer (pH 6.0). * The dilutions indicate recommended starting dilutions and the optimal dilutions or concentrations should be determined by the scientist.	

### Properties

Form	Liquid
Purification	Purified from goat serum by antigen affinity chromatography.
Buffer	Tris saline (pH 7.3), 0.02% Sodium azide and 0.5% BSA.
Preservative	0.02% Sodium azide
Stabilizer	0.5% BSA
Concentration	0.5 mg/ml
Storage instruction	For continuous use, store undiluted antibody at 2-8°C for up to a week. For long-term storage, aliquot and store at -20°C or below. Storage in frost free freezers is not recommended. Avoid repeated freeze/thaw cycles. Suggest spin the vial prior to opening. The antibody solution should be gently mixed

before use.

Note

For laboratory research only, not for drug, diagnostic or other use.

## Bioinformation

---

Database links

[GeneID: 1495 Human](#)

[Swiss-port # P35221 Human](#)

Gene Symbol

CTNNA1

Gene Full Name

catenin (cadherin-associated protein), alpha 1, 102kDa

Function

Associates with the cytoplasmic domain of a variety of cadherins. The association of catenins to cadherins produces a complex which is linked to the actin filament network, and which seems to be of primary importance for cadherins cell-adhesion properties. Can associate with both E- and N-cadherins. Originally believed to be a stable component of E-cadherin/catenin adhesion complexes and to mediate the linkage of cadherins to the actin cytoskeleton at adherens junctions. In contrast, cortical actin was found to be much more dynamic than E-cadherin/catenin complexes and CTNNA1 was shown not to bind to F-actin when assembled in the complex suggesting a different linkage between actin and adherens junctions components. The homodimeric form may regulate actin filament assembly and inhibit actin branching by competing with the Arp2/3 complex for binding to actin filaments. May play a crucial role in cell differentiation. [UniProt]

Research Area

Cancer antibody; Developmental Biology antibody; Signaling Transduction antibody

Calculated Mw

100 kDa

PTM

Sumoylated.

Phosphorylation seems to contribute to the strength of cell-cell adhesion rather than to the basic capacity for cell-cell adhesion.

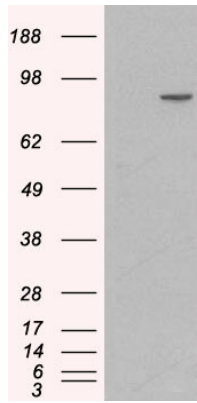
## Images

---



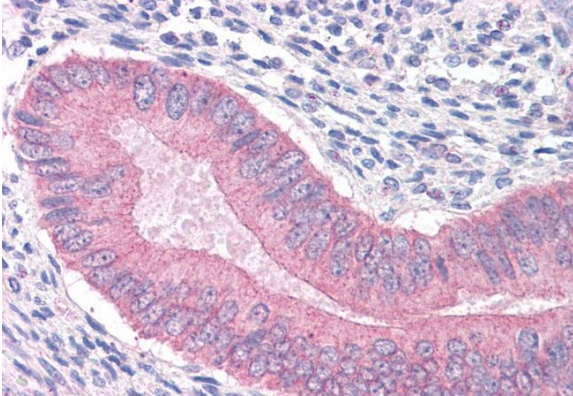
ARG63953 anti-alpha Catenin antibody WB image

Western blot: 35 µg of Human colon lysate stained with ARG63953 anti-alpha Catenin antibody at 1 µg/ml dilution.



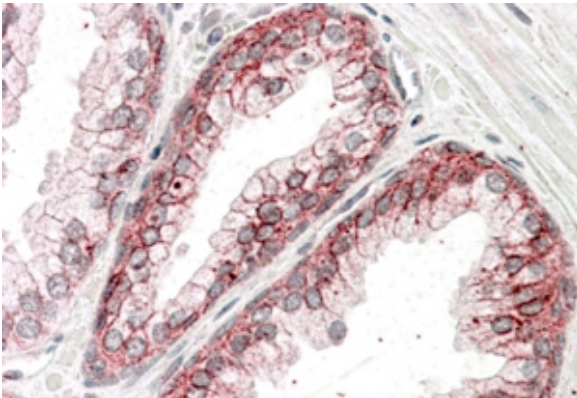
ARG63953 anti-alpha Catenin antibody WB image

Western blot: 1) Mock transfection and 2) Human CTNNA1 expressing plasmid transfected HEK293 cell lysate stained with ARG63953 anti-alpha Catenin antibody.



ARG63953 anti-alpha Catenin antibody IHC-P image

Immunohistochemistry: Paraffin-embedded Human uterus tissue. Antigen Retrieval: Steam tissue section in Citrate buffer (pH 6.0). The tissue section was stained with ARG63953 anti-alpha Catenin antibody at 3.75  $\mu\text{g}/\text{ml}$  dilution followed by AP-staining.



ARG63953 anti-alpha Catenin antibody IHC-P image

Immunohistochemistry: Paraffin-embedded Human Prostate (Steamed antigen retrieval with citrate buffer pH 6) stained with ARG63953 anti-alpha Catenin antibody at 3.8  $\mu\text{g}/\text{ml}$  dilution, followed by AP-staining.