

ARG63958 anti-Casein Kinase 1 delta antibody

Package: 100 µg
Store at: -20°C

Summary

Product Description	Goat Polyclonal antibody recognizes Casein Kinase 1 delta
Tested Reactivity	Hu
Predict Reactivity	Ms, Rat, Dog
Tested Application	ICC/IF, WB
Specificity	This antibody is expected to recognise both reported isoforms (NP_001884.2 and NP_620693.1)
Host	Goat
Clonality	Polyclonal
Isotype	IgG
Target Name	Casein Kinase 1 delta
Species	Human
Immunogen	C-DREERLRHSRNPATR
Conjugation	Un-conjugated
Alternate Names	ASPS; EC 2.7.11.26; CKIdelta; CKId; HCKID; Casein kinase I isoform delta; Tau-protein kinase CSNK1D; EC 2.7.11.1; CKI-delta; FASPS2

Application Instructions

Application table	Application	Dilution
	ICC/IF	10 µg/ml
	WB	0.3 - 1 µg/ml
Application Note	WB: Recommend incubate at RT for 1h. * The dilutions indicate recommended starting dilutions and the optimal dilutions or concentrations should be determined by the scientist.	

Properties

Form	Liquid
Purification	Purified from goat serum by antigen affinity chromatography.
Buffer	Tris saline (pH 7.3), 0.02% Sodium azide and 0.5% BSA.
Preservative	0.02% Sodium azide
Stabilizer	0.5% BSA
Concentration	0.5 mg/ml
Storage instruction	For continuous use, store undiluted antibody at 2-8°C for up to a week. For long-term storage, aliquot and store at -20°C or below. Storage in frost free freezers is not recommended. Avoid repeated freeze/thaw cycles. Suggest spin the vial prior to opening. The antibody solution should be gently mixed

before use.

Note

For laboratory research only, not for drug, diagnostic or other use.

Bioinformation

Database links

[GeneID: 1453 Human](#)

[Swiss-port # P48730 Human](#)

Background

This gene is a member of the casein kinase I (CKI) gene family whose members have been implicated in the control of cytoplasmic and nuclear processes, including DNA replication and repair. The encoded protein is highly similar to the mouse and rat CK1 delta homologs. Two transcript variants encoding different isoforms have been found for this gene. [provided by RefSeq, Jul 2008]

Research Area

Cell Biology and Cellular Response antibody; Cell Death antibody; Developmental Biology antibody; Neuroscience antibody; Signaling Transduction antibody

Calculated Mw

47 kDa

PTM

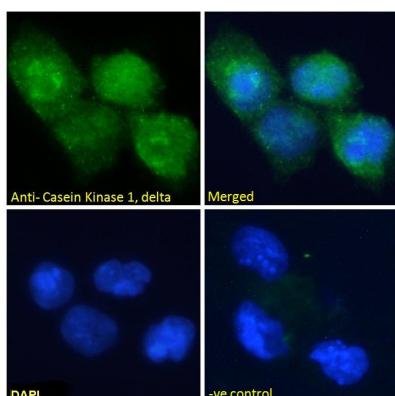
Autophosphorylated on serine and threonine residues; this autophosphorylation represses activity. Reactivated by phosphatase-mediated dephosphorylation. May be dephosphorylated by PP1.

Images



ARG63958 anti-Casein Kinase 1 delta antibody WB image

Western blot: 293 cell lysate (35 µg protein in RIPA buffer) stained with ARG63958 anti-Casein Kinase 1 delta antibody at 0.3 µg/ml dilution.



ARG63958 anti-Casein Kinase 1 delta antibody ICC/IF image

Immunofluorescence: Paraformaldehyde fixed U251 cells permeabilized with 0.15% Triton. Cells were stained with ARG63958 anti-Casein Kinase 1 delta antibody (green) at 10 µg/ml dilution for 1 hour. DAPI (blue) for nuclear staining. Negative control: Unimmunized goat IgG (green) at 10 µg/ml dilution.