

ARG63967 anti-SH2D1A / SAP antibody

Package: 100 µg
Store at: -20°C

Summary

Product Description	Goat Polyclonal antibody recognizes SH2D1A / SAP
Tested Reactivity	Hu
Predict Reactivity	Pig
Tested Application	IP, WB
Host	Goat
Clonality	Polyclonal
Isotype	IgG
Target Name	SH2D1A / SAP
Species	Human
Immunogen	C-QYPVEKKSSARSTQ
Conjugation	Un-conjugated
Alternate Names	SLAM-associated protein; T-cell signal transduction molecule SAP; IMD5; EBVS; Duncan disease SH2-protein; Signaling lymphocytic activation molecule-associated protein; SAP/SH2D1A; DSHP; SH2 domain-containing protein 1A; MTCP1; XLPD; LYP; XLPD1; SAP; XLP

Application Instructions

Application table	Application	Dilution
	IP	Assay - dependent
	WB	0.2 - 0.6 µg/ml
Application Note	WB: Recommend incubate at RT for 1h. * The dilutions indicate recommended starting dilutions and the optimal dilutions or concentrations should be determined by the scientist.	

Properties

Form	Liquid
Purification	Purified from goat serum by antigen affinity chromatography.
Buffer	Tris saline (pH 7.3), 0.02% Sodium azide and 0.5% BSA.
Preservative	0.02% Sodium azide
Stabilizer	0.5% BSA
Concentration	0.5 mg/ml
Storage instruction	For continuous use, store undiluted antibody at 2-8°C for up to a week. For long-term storage, aliquot and store at -20°C or below. Storage in frost free freezers is not recommended. Avoid repeated freeze/thaw cycles. Suggest spin the vial prior to opening. The antibody solution should be gently mixed

before use.

Note

For laboratory research only, not for drug, diagnostic or other use.

Bioinformation

Database links

[GeneID: 4068 Human](#)

[Swiss-port # O60880 Human](#)

Background

This gene encodes a protein that plays a major role in the bidirectional stimulation of T and B cells. This protein contains an SH2 domain and a short tail. It associates with the signaling lymphocyte-activation molecule, thereby acting as an inhibitor of this transmembrane protein by blocking the recruitment of the SH2-domain-containing signal-transduction molecule SHP-2 to its docking site. This protein can also bind to other related surface molecules that are expressed on activated T, B and NK cells, thereby modifying signal transduction pathways in these cells. Mutations in this gene cause lymphoproliferative syndrome X-linked type 1 or Duncan disease, a rare immunodeficiency characterized by extreme susceptibility to infection with Epstein-Barr virus, with symptoms including severe mononucleosis and malignant lymphoma. Multiple transcript variants encoding different isoforms have been found for this gene. [provided by RefSeq, Jul 2008]

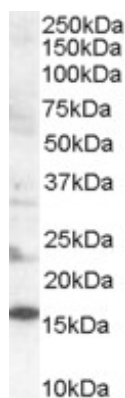
Research Area

Cell Biology and Cellular Response antibody; Immune System antibody

Calculated Mw

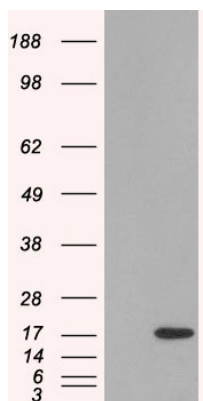
14 kDa

Images



ARG63967 anti-SH2D1A / SAP antibody WB image

Western blot: 35 µg of Human lymph node lysate stained with ARG63967 anti-SH2D1A / SAP antibody at 0.2 µg/ml dilution.



ARG63967 anti-SH2D1A / SAP antibody WB image

Western blot: 1) Mock transfection and 2) SH2D1A expressing plasmid transfected HEK293 cell lysate stained with ARG63967 anti-SH2D1A / SAP antibody.