

ARG63971 anti-AMPH / Amphiphysin antibody

Package: 100 µg
Store at: -20°C

Summary

Product Description	Goat Polyclonal antibody recognizes AMPH / Amphiphysin
Tested Reactivity	Hu, Ms
Predict Reactivity	Dog, Rat
Tested Application	IHC-P, WB
Specificity	This antibody is expected to recognise both reported isoforms (NP_001626.1 and NP_647477.1).
Host	Goat
Clonality	Polyclonal
Isotype	IgG
Target Name	AMPH / Amphiphysin
Species	Human
Immunogen	C-KRKDESRISKAE
Conjugation	Un-conjugated
Alternate Names	Amphiphysin; AMPH1

Application Instructions

Application table	Application	Dilution
	IHC-P	2 - 4 µg/ml
	WB	0.1 - 0.5 µg/ml
Application Note	IHC-P: Antigen Retrieval: Steam tissue section in Citrate buffer (pH 6.0). WB: Recommend incubate at RT for 1h. * The dilutions indicate recommended starting dilutions and the optimal dilutions or concentrations should be determined by the scientist.	

Properties

Form	Liquid
Purification	Purified from goat serum by antigen affinity chromatography.
Buffer	Tris saline (pH 7.3), 0.02% Sodium azide and 0.5% BSA.
Preservative	0.02% Sodium azide
Stabilizer	0.5% BSA
Concentration	0.5 mg/ml
Storage instruction	For continuous use, store undiluted antibody at 2-8°C for up to a week. For long-term storage, aliquot and store at -20°C or below. Storage in frost free freezers is not recommended. Avoid repeated freeze/thaw cycles. Suggest spin the vial prior to opening. The antibody solution should be gently mixed

before use.

Note

For laboratory research only, not for drug, diagnostic or other use.

Bioinformation

Database links

[GeneID: 218038 Mouse](#)

[GeneID: 273 Human](#)

[Swiss-port # P49418 Human](#)

[Swiss-port # Q7TQF7 Mouse](#)

Background

This gene encodes a protein associated with the cytoplasmic surface of synaptic vesicles. A subset of patients with stiff-man syndrome who were also affected by breast cancer are positive for autoantibodies against this protein. Alternate splicing of this gene results in two transcript variants encoding different isoforms. Additional splice variants have been described, but their full length sequences have not been determined. A pseudogene of this gene is found on chromosome 11.[provided by RefSeq, Nov 2010]

Research Area

Immune System antibody; Neuroscience antibody

Calculated Mw

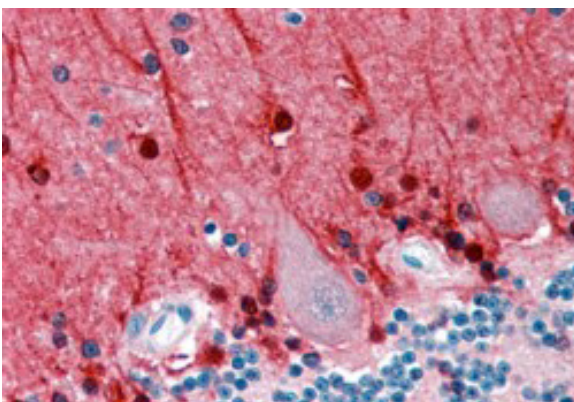
76 kDa

Images



ARG63971 anti-AMPH / Amphiphysin antibody WB image

Western blot: Mouse brain lysate (35 µg protein in RIPA buffer) stained with ARG63971 anti-AMPH / Amphiphysin antibody at 0.5 µg/ml dilution.



ARG63971 anti-AMPH / Amphiphysin antibody IHC-P image

Immunohistochemistry: Paraffin embedded Human Cerebellum. (Steamed antigen retrieval with citrate buffer pH 6) stained with ARG63971 anti-AMPH / Amphiphysin antibody at 2.5 µg/ml dilution followed by AP-staining.