

ARG63978 anti-PREP / Prolyl Endopeptidase antibody

Package: 100 µg
Store at: -20°C

Summary

Product Description	Goat Polyclonal antibody recognizes PREP / Prolyl Endopeptidase
Tested Reactivity	Hu
Predict Reactivity	Ms, Rat, Cow, Dog, Pig
Tested Application	IHC-P
Host	Goat
Clonality	Polyclonal
Isotype	IgG
Target Name	PREP / Prolyl Endopeptidase
Species	Human
Immunogen	C-QYIVGRSRKQSNP
Conjugation	Un-conjugated
Alternate Names	EC 3.4.21.26; Post-proline cleaving enzyme; PEP; Prolyl endopeptidase; PE

Application Instructions

Application table	Application	Dilution
	IHC-P	3 - 5 µg/ml
Application Note	IHC-P: Antigen Retrieval: Steam tissue section in Citrate buffer (pH 6.0). * The dilutions indicate recommended starting dilutions and the optimal dilutions or concentrations should be determined by the scientist.	

Properties

Form	Liquid
Purification	Purified from goat serum by antigen affinity chromatography.
Buffer	Tris saline (pH 7.3), 0.02% Sodium azide and 0.5% BSA.
Preservative	0.02% Sodium azide
Stabilizer	0.5% BSA
Concentration	0.5 mg/ml
Storage instruction	For continuous use, store undiluted antibody at 2-8°C for up to a week. For long-term storage, aliquot and store at -20°C or below. Storage in frost free freezers is not recommended. Avoid repeated freeze/thaw cycles. Suggest spin the vial prior to opening. The antibody solution should be gently mixed before use.
Note	For laboratory research only, not for drug, diagnostic or other use.

Bioinformation

Database links

[GeneID: 5550 Human](#)

[Swiss-port # P48147 Human](#)

Background

The protein encoded by this gene is a cytosolic prolyl endopeptidase that cleaves peptide bonds on the C-terminal side of prolyl residues within peptides that are up to approximately 30 amino acids long. Prolyl endopeptidases have been reported to be involved in the maturation and degradation of peptide hormones and neuropeptides. [provided by RefSeq, Jul 2008]

Research Area

Cell Biology and Cellular Response antibody

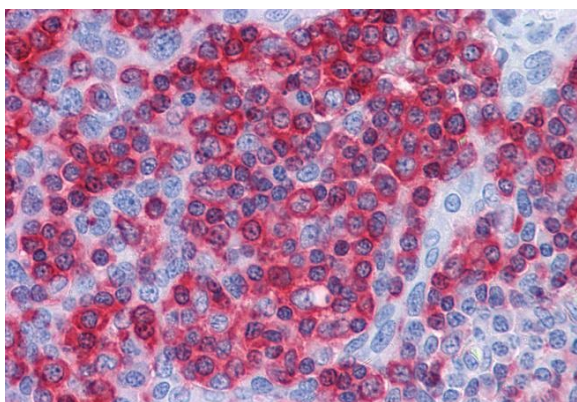
Calculated Mw

81 kDa

PTM

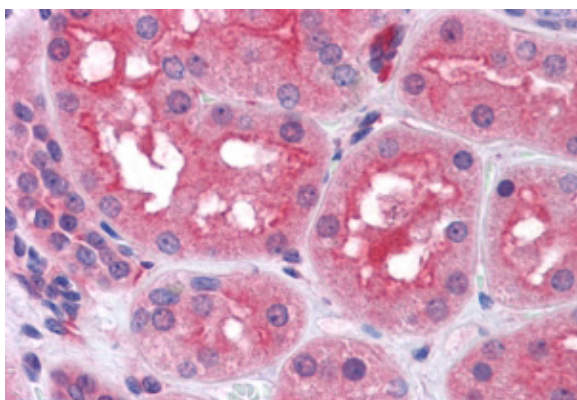
The N-terminus is blocked.

Images



ARG63978 anti-PREP / Prolyl Endopeptidase antibody IHC-P image

Immunohistochemistry: Paraffin-embedded Human tonsil tissue. Antigen Retrieval: Steam tissue section in Citrate buffer (pH 6.0). The tissue section was stained with ARG63978 anti-PREP / Prolyl Endopeptidase antibody at 3.75 µg/ml dilution followed by AP-staining.



ARG63978 anti-PREP / Prolyl Endopeptidase antibody IHC-P image

Immunohistochemistry: Paraffin embedded Human Kidney. (Steamed antigen retrieval with citrate buffer pH 6) stained with ARG63978 anti-PREP / Prolyl Endopeptidase antibody at 3.8 µg/ml dilution followed by AP-staining.