

ARG64024 anti-PICK1 antibody

Package: 100 µg
Store at: -20°C

Summary

Product Description	Goat Polyclonal antibody recognizes PICK1
Tested Reactivity	Hu, Ms
Predict Reactivity	Cow, Rat, Dog, Pig
Tested Application	IHC-P, WB
Specificity	Reported variants represent identical protein (NP_036539.1; NP_001034672.1; NP_001034673.1).
Host	Goat
Clonality	Polyclonal
Isotype	IgG
Target Name	PICK1
Species	Human
Immunogen	C-HYNKLQADPKQ
Conjugation	Un-conjugated
Alternate Names	PRKCABP; PRKCA-binding protein; Protein interacting with C kinase 1; Protein kinase C-alpha-binding protein; PICK

Application Instructions

Application table	Application	Dilution
	IHC-P	5 µg/ml
	WB	1 - 3 µg/ml
Application Note	WB: Recommend incubate at RT for 1h. IHC-P: Antigen Retrieval: Steam tissue section in Citrate buffer (pH 6.0). * The dilutions indicate recommended starting dilutions and the optimal dilutions or concentrations should be determined by the scientist.	

Properties

Form	Liquid
Purification	Purified from goat serum by antigen affinity chromatography.
Buffer	Tris saline (pH 7.3), 0.02% Sodium azide and 0.5% BSA.
Preservative	0.02% Sodium azide
Stabilizer	0.5% BSA
Concentration	0.5 mg/ml
Storage instruction	For continuous use, store undiluted antibody at 2-8°C for up to a week. For long-term storage, aliquot and store at -20°C or below. Storage in frost free freezers is not recommended. Avoid repeated

freeze/thaw cycles. Suggest spin the vial prior to opening. The antibody solution should be gently mixed before use.

Note

For laboratory research only, not for drug, diagnostic or other use.

Bioinformation

Database links

[GeneID: 9463 Human](#)

[Swiss-port # Q9NRD5 Human](#)

Background

The protein encoded by this gene contains a PDZ domain, through which it interacts with protein kinase C, alpha (PRKCA). This protein may function as an adaptor that binds to and organizes the subcellular localization of a variety of membrane proteins. It has been shown to interact with multiple glutamate receptor subtypes, monoamine plasma membrane transporters, as well as non-voltage gated sodium channels, and may target PRKCA to these membrane proteins and thus regulate their distribution and function. This protein has also been found to act as an anchoring protein that specifically targets PRKCA to mitochondria in a ligand-specific manner. Three transcript variants encoding the same protein have been found for this gene. [provided by RefSeq, Jul 2008]

Research Area

Neuroscience antibody; Signaling Transduction antibody

Calculated Mw

47 kDa

PTM

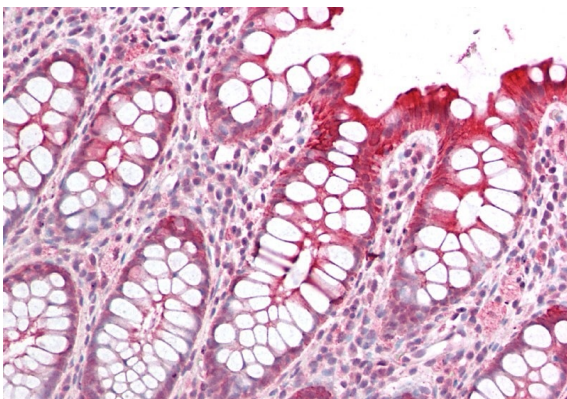
Phosphorylation at Thr-82 appears to inhibit the interaction with AMPA receptors. Palmitoylation on Cys-413 is essential for long-term synaptic depression (LTD).

Images



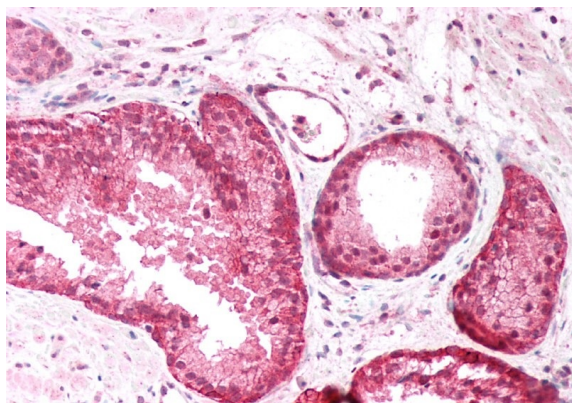
ARG64024 anti-PICK1 antibody WB image

Western Blot: mouse brain lysate (35 µg protein in RIPA buffer) stained with ARG64024 anti-PICK1 antibody at 1 µg/ml dilution.



ARG64024 anti-PICK1 antibody IHC-P image

Immunohistochemistry: Paraffin-embedded Human colon tissue. Antigen Retrieval: Steam tissue section in Citrate buffer (pH 6.0). The tissue section was stained with ARG64024 anti-PICK1 antibody at 5 µg/ml dilution followed by AP-staining.



ARG64024 anti-PICK1 antibody IHC-P image

Immunohistochemistry: Paraffin-embedded Human prostate tissue.
Antigen Retrieval: Steam tissue section in Citrate buffer (pH 6.0). The tissue section was stained with ARG64024 anti-PICK1 antibody at 5 μ g/ml dilution followed by AP-staining.