

ARG64028 anti-TPTE / PTEN2 antibody

Package: 100 µg
Store at: -20°C

Summary

Product Description	Goat Polyclonal antibody recognizes TPTE / PTEN2
Tested Reactivity	Hu
Tested Application	IHC-P, WB
Specificity	This antibody is expected to recognise all reported isoforms (NP_954870.2, NP_954868.1 and NP_954869.1). It may cross-react with the almost identical TPTE2 (GeneID 93492; NP_570141.2, NP_954864.1, NP_954863.1).
Host	Goat
Clonality	Polyclonal
Isotype	IgG
Target Name	TPTE / PTEN2
Species	Human
Immunogen	C-ERRTDKTHSEKFQ
Conjugation	Un-conjugated
Alternate Names	Putative tyrosine-protein phosphatase TPTE; Tumor antigen BJ-HCC-5; PTEN2; Transmembrane phosphatase with tensin homology; CT44; EC 3.1.3.48; Cancer/testis antigen 44

Application Instructions

Application table	Application	Dilution
	IHC-P	2.5 µg/ml
	WB	1 - 3 µg/ml
Application Note	WB: Recommend incubate at RT for 1h. IHC-P: Antigen Retrieval: Steam tissue section in Citrate buffer (pH 6.0). * The dilutions indicate recommended starting dilutions and the optimal dilutions or concentrations should be determined by the scientist.	

Properties

Form	Liquid
Purification	Purified from goat serum by antigen affinity chromatography.
Buffer	Tris saline (pH 7.3), 0.02% Sodium azide and 0.5% BSA.
Preservative	0.02% Sodium azide
Stabilizer	0.5% BSA
Concentration	0.5 mg/ml
Storage instruction	For continuous use, store undiluted antibody at 2-8°C for up to a week. For long-term storage, aliquot

and store at -20°C or below. Storage in frost free freezers is not recommended. Avoid repeated freeze/thaw cycles. Suggest spin the vial prior to opening. The antibody solution should be gently mixed before use.

Note For laboratory research only, not for drug, diagnostic or other use.

Bioinformation

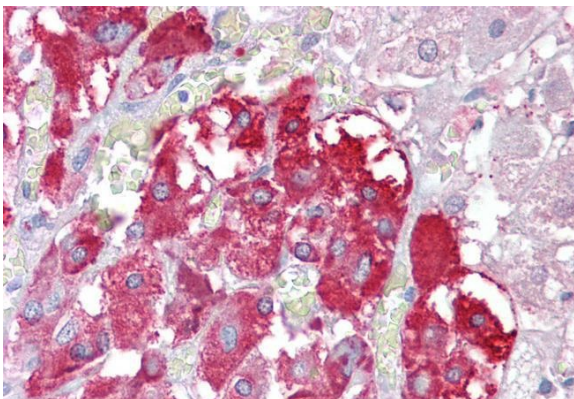
Database links	GeneID: 7179 Human Swiss-port # P56180 Human
Background	This gene encodes a PTEN-related tyrosine phosphatase which may play a role in the signal transduction pathways of the endocrine or spermatogenic function of the testis. Alternative splicing results in multiple transcript variants. [provided by RefSeq, Mar 2014]
Research Area	Cancer antibody; Cell Biology and Cellular Response antibody; Signaling Transduction antibody
Calculated Mw	64 kDa

Images



ARG64028 anti-TPTE / PTEN2 antibody WB image

Western Blot: Human Testis lysate (35 µg protein in RIPA buffer) stained with ARG64028 anti-TPTE / PTEN2 antibody at 1 µg/ml dilution.



ARG64028 anti-TPTE / PTEN2 antibody IHC-P image

Immunohistochemistry: Paraffin-embedded Human adrenal gland tissue. Antigen Retrieval: Steam tissue section in Citrate buffer (pH 6.0). The tissue section was stained with ARG64028 anti-TPTE / PTEN2 antibody at 2.5 µg/ml dilution followed by AP-staining.