

ARG64036 anti-DSCAM antibody

Package: 100 µg
Store at: -20°C

Summary

Product Description	Goat Polyclonal antibody recognizes DSCAM
Tested Reactivity	Hu
Predict Reactivity	Ms, Rat, Dog
Tested Application	FACS, ICC/IF, WB
Specificity	This antibody is expected to recognise both reported isoforms (NP_001380.2 and NP_996770.1).
Host	Goat
Clonality	Polyclonal
Isotype	IgG
Target Name	DSCAM
Species	Human
Immunogen	C-DSWDSAQRTKDVSPQ
Conjugation	Un-conjugated
Alternate Names	CHD2-42; CHD2-52; CHD2; Down syndrome cell adhesion molecule

Application Instructions

Application table	Application	Dilution
	FACS	10 µg/ml
	ICC/IF	10 µg/ml
	WB	2 - 3 µg/ml
Application Note	WB: Recommend incubate at RT for 1h. * The dilutions indicate recommended starting dilutions and the optimal dilutions or concentrations should be determined by the scientist.	

Properties

Form	Liquid
Purification	Purified from goat serum by antigen affinity chromatography.
Buffer	Tris saline (pH 7.3), 0.02% Sodium azide and 0.5% BSA.
Preservative	0.02% Sodium azide
Stabilizer	0.5% BSA
Concentration	0.5 mg/ml
Storage instruction	For continuous use, store undiluted antibody at 2-8°C for up to a week. For long-term storage, aliquot and store at -20°C or below. Storage in frost free freezers is not recommended. Avoid repeated

freeze/thaw cycles. Suggest spin the vial prior to opening. The antibody solution should be gently mixed before use.

Note

For laboratory research only, not for drug, diagnostic or other use.

Bioinformation

Database links

[GeneID: 1826 Human](#)

[Swiss-port # O60469 Human](#)

Background

This gene is a member of the immunoglobulin superfamily of cell adhesion molecules (Ig-CAMs), and is involved in human central and peripheral nervous system development. This gene is a candidate for Down syndrome and congenital heart disease (DSCHD). A gene encoding a similar Ig-CAM protein is located on chromosome 11. Alternatively spliced transcript variants encoding multiple isoforms have been observed for this gene. [provided by RefSeq, Oct 2012]

Research Area

Neuroscience antibody

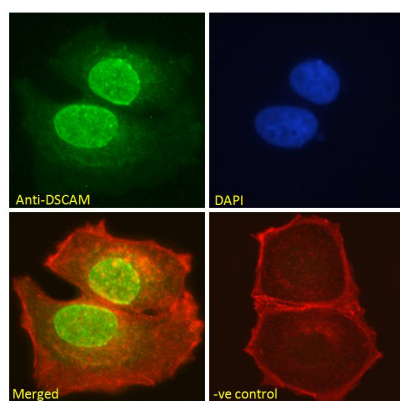
Calculated Mw

222 kDa

PTM

Phosphorylated at tyrosine residues. Phosphorylation is enhanced by netrin.

Images



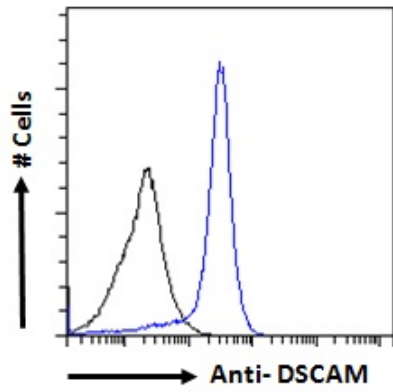
ARG64036 anti-DSCAM antibody ICC/IF image

Immunofluorescence: Paraformaldehyde fixed MCF7 cells permeabilized with 0.15% Triton. Cells were stained with ARG64036 anti-DSCAM antibody (green) at 10 μ g/ml dilution for 1 hour. DAPI (blue) for nuclear staining. Phalloidin (red) for Actin filaments staining. Negative control: Unimmunized goat IgG (green) at 10 μ g/ml dilution.



ARG64036 anti-DSCAM antibody WB image

Western blot: 35 μ g of HepG2 cell lysate (in RIPA buffer) stained with ARG64036 anti-DSCAM antibody at 2 μ g/ml dilution and incubated at RT for 1 hour.



ARG64036 anti-DSCAM antibody FACS image

Flow Cytometry: Paraformaldehyde-fixed MCF7 cells permeabilized with 0.5% Triton. Cells were stained with ARG64036 anti-DSCAM antibody (blue line) at 10 $\mu\text{g}/\text{ml}$ dilution for 1 hour, followed by incubation with Alexa FluorR 488 labelled secondary antibody. IgG control: Unimmunized goat IgG (black line).