

## ARG64059 anti-CHA / TCFL5 antibody

Package: 100 µg  
Store at: -20°C

### Summary

Product Description	Goat Polyclonal antibody recognizes CHA / TCFL5
Tested Reactivity	Hu
Predict Reactivity	Ms, Rat, Dog
Tested Application	WB
Host	Goat
Clonality	Polyclonal
Isotype	IgG
Target Name	CHA / TCFL5
Species	Human
Immunogen	C-KYIQRHGDSLKKE
Conjugation	Un-conjugated
Alternate Names	Transcription factor-like 5 protein; CHA; Figlb; E2BP-1; HPV-16 E2-binding protein 1; bHLHe82; Cha transcription factor

### Application Instructions

Application table	Application	Dilution
	WB	0.3 - 1 µg/ml
Application Note	WB: Recommend incubate at RT for 1h. * The dilutions indicate recommended starting dilutions and the optimal dilutions or concentrations should be determined by the scientist.	

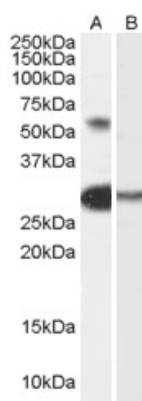
### Properties

Form	Liquid
Purification	Purified from goat serum by antigen affinity chromatography.
Buffer	Tris saline (pH 7.3), 0.02% Sodium azide and 0.5% BSA.
Preservative	0.02% Sodium azide
Stabilizer	0.5% BSA
Concentration	0.5 mg/ml
Storage instruction	For continuous use, store undiluted antibody at 2-8°C for up to a week. For long-term storage, aliquot and store at -20°C or below. Storage in frost free freezers is not recommended. Avoid repeated freeze/thaw cycles. Suggest spin the vial prior to opening. The antibody solution should be gently mixed before use.
Note	For laboratory research only, not for drug, diagnostic or other use.

Bioinformation

Database links	<a href="#">GeneID: 10732 Human</a> <a href="#">Swiss-port # Q9UL49 Human</a>
Gene Symbol	TCFL5
Gene Full Name	transcription factor-like 5 (basic helix-loop-helix)
Function	Putative transcription factor. Isoform 3 may play a role in early spermatogenesis. [UniProt]
Research Area	Gene Regulation antibody
Calculated Mw	53 kDa

Images



ARG64059 anti-CHA / TCFL5 antibody WB image

Western Blot: Human Testis lysate (35 µg protein in RIPA buffer) with (B) and without (A) blocking with the immunising peptide. stained with ARG64059 anti-TCFL5 antibody at 0.3 µg/ml dilution.