

## ARG64064 anti-FBXL3 antibody

Package: 100 µg  
Store at: -20°C

### Summary

Product Description	Goat Polyclonal antibody recognizes FBXL3
Tested Reactivity	Hu
Predict Reactivity	Ms, Rat, Dog, Pig
Tested Application	IHC-P, WB
Host	Goat
Clonality	Polyclonal
Isotype	IgG
Target Name	FBXL3
Species	Human
Immunogen	KRGGRSDRNSSEE-C
Conjugation	Un-conjugated
Alternate Names	FBXL3; FBXL3A; F-box/LRR-repeat protein 3; F-box and leucine-rich repeat protein 3A; FBL3A; F-box/LRR-repeat protein 3A

### Application Instructions

Application table	Application	Dilution
	IHC-P	5 µg/ml
	WB	1 - 3 µg/ml
Application Note	WB: Recommend incubate at RT for 1h. IHC-P: Antigen Retrieval: Steam tissue section in Citrate buffer (pH 6.0). * The dilutions indicate recommended starting dilutions and the optimal dilutions or concentrations should be determined by the scientist.	

### Properties

Form	Liquid
Purification	Purified from goat serum by antigen affinity chromatography.
Buffer	Tris saline (pH 7.3), 0.02% Sodium azide and 0.5% BSA.
Preservative	0.02% Sodium azide
Stabilizer	0.5% BSA
Concentration	0.5 mg/ml
Storage instruction	For continuous use, store undiluted antibody at 2-8°C for up to a week. For long-term storage, aliquot and store at -20°C or below. Storage in frost free freezers is not recommended. Avoid repeated freeze/thaw cycles. Suggest spin the vial prior to opening. The antibody solution should be gently mixed

before use.

#### Note

For laboratory research only, not for drug, diagnostic or other use.

## Bioinformation

#### Database links

[GeneID: 26224 Human](#)

[Swiss-port # Q9UKT7 Human](#)

#### Background

This gene encodes a member of the F-box protein family which is characterized by an approximately 40 amino acid motif, the F-box. The F-box proteins constitute one of the four subunits of ubiquitin protein ligase complex called SCFs (SKP1-cullin-F-box), which function in phosphorylation-dependent ubiquitination. The F-box proteins are divided into 3 classes: Fbws containing WD-40 domains, Fbls containing leucine-rich repeats, and Fbxs containing either different protein-protein interaction modules or no recognizable motifs. The protein encoded by this gene belongs to the Fbls class and, in addition to an F-box, contains several tandem leucine-rich repeats and is localized in the nucleus. [provided by RefSeq, Jul 2008]

#### Research Area

Cell Biology and Cellular Response antibody

#### Calculated Mw

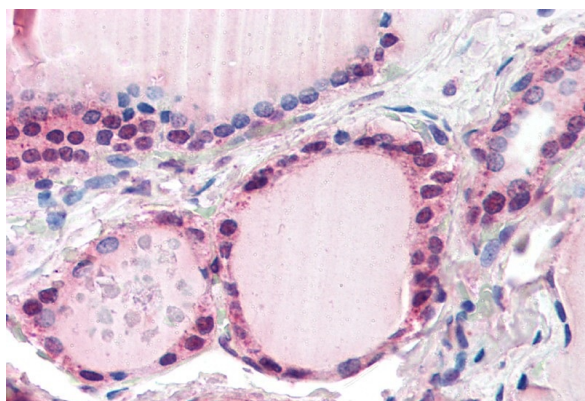
49 kDa

## Images



ARG64064 anti-FBXL3 antibody WB image

Western Blot: Human Adipose lysate (35 µg protein in RIPA buffer) stained with ARG64064 anti-FBXL3 antibody at 1 µg/ml dilution.



ARG64064 anti-FBXL3 antibody IHC-P image

Immunohistochemistry: Paraffin-embedded Human thyroid tissue. Antigen Retrieval: Steam tissue section in Citrate buffer (pH 6.0). The tissue section was stained with ARG64064 anti-FBXL3 antibody at 5 µg/ml dilution followed by AP-staining.