

ARG64068 anti-Syntenin 1 antibody

Package: 100 µg
Store at: -20°C

Summary

Product Description	Goat Polyclonal antibody recognizes Syntenin 1
Tested Reactivity	Hu
Predict Reactivity	Ms, Rat, Dog
Tested Application	IHC-P, WB
Specificity	This antibody is expected to recognise isoform 1 (NP_005616.2 and NP_001007068.1) and isoform 3 (NP_001007070.1 and NP_001007071.1) only.
Host	Goat
Clonality	Polyclonal
Isotype	IgG
Target Name	Syntenin 1
Species	Human
Immunogen	SLEDLKVDDKVIQAQ-C
Conjugation	Un-conjugated
Alternate Names	SYCL; MDA-9; MDA9; Pro-TGF-alpha cytoplasmic domain-interacting protein 18; Syndecan-binding protein 1; TACIP18; Scaffold protein Pbp1; ST1; Syntenin-1; Melanoma differentiation-associated protein 9

Application Instructions

Application table	Application	Dilution
	IHC-P	10 µg/ml
	WB	0.01 - 0.03 µg/ml
Application Note	WB: Recommend incubate at RT for 1h. IHC-P: Antigen Retrieval: Steam tissue section in Citrate buffer (pH 6.0). * The dilutions indicate recommended starting dilutions and the optimal dilutions or concentrations should be determined by the scientist.	

Properties

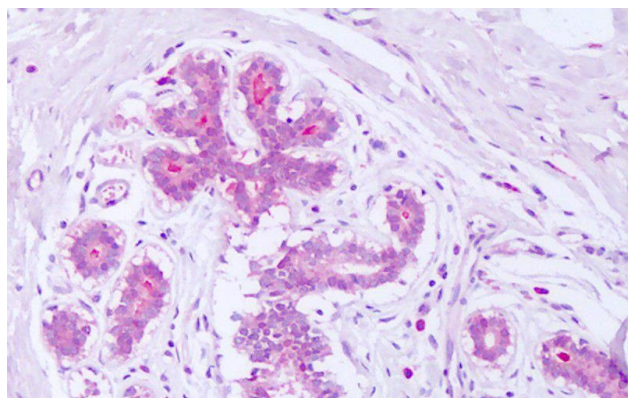
Form	Liquid
Purification	Purified from goat serum by antigen affinity chromatography.
Buffer	Tris saline (pH 7.3), 0.02% Sodium azide and 0.5% BSA.
Preservative	0.02% Sodium azide
Stabilizer	0.5% BSA
Concentration	0.5 mg/ml

Storage instruction	For continuous use, store undiluted antibody at 2-8°C for up to a week. For long-term storage, aliquot and store at -20°C or below. Storage in frost free freezers is not recommended. Avoid repeated freeze/thaw cycles. Suggest spin the vial prior to opening. The antibody solution should be gently mixed before use.
Note	For laboratory research only, not for drug, diagnostic or other use.

Bioinformation

Database links	GeneID: 6386 Human Swiss-port # O00560 Human
Background	The protein encoded by this gene was initially identified as a molecule linking syndecan-mediated signaling to the cytoskeleton. The syntenin protein contains tandemly repeated PDZ domains that bind the cytoplasmic, C-terminal domains of a variety of transmembrane proteins. This protein may also affect cytoskeletal-membrane organization, cell adhesion, protein trafficking, and the activation of transcription factors. The protein is primarily localized to membrane-associated adherens junctions and focal adhesions but is also found at the endoplasmic reticulum and nucleus. Alternative splicing results in multiple transcript variants encoding different isoforms. [provided by RefSeq, Jul 2008]
Research Area	Neuroscience antibody
Calculated Mw	32 kDa
PTM	Phosphorylated on tyrosine residues.

Images



ARG64068 anti-Syntenin 1 antibody IHC-P image

Immunohistochemistry: Paraffin-embedded Human breast tissue. Antigen Retrieval: Steam tissue section in Citrate buffer (pH 6.0). The tissue section was stained with ARG64068 anti-Syntenin 1 antibody at 10 µg/ml dilution followed by AP-staining.



ARG64068 anti-Syntenin 1 antibody WB image

Western blot: 35 µg of Human HEK293 cell lysate (in RIPA buffer) stained with ARG64068 anti-Syntenin 1 antibody at 0.01 µg/ml dilution and incubated at RT for 1 hour.