

## ARG64171 anti-Cyld antibody

Package: 100 µg  
Store at: -20°C

### Summary

Product Description	Goat Polyclonal antibody recognizes Cyld
Tested Reactivity	Ms, Rat
Tested Application	IHC-P, WB
Host	Goat
Clonality	Polyclonal
Isotype	IgG
Target Name	Cyld
Species	Mouse
Immunogen	C-DSQQSKSKNPWYIDE
Conjugation	Un-conjugated
Alternate Names	Ubiquitin carboxyl-terminal hydrolase CYLD; SBS; Ubiquitin thioesterase CYLD; CYLD1; TEM; USPL2; EAC; Ubiquitin-specific-processing protease CYLD; CDMT; MFT1; MFT; BRSS; CYLDI; Deubiquitinating enzyme CYLD; EC 3.4.19.12

### Application Instructions

Application table	Application	Dilution
	IHC-P	5 µg/ml
	WB	0.5 - 1.5 µg/ml
Application Note	WB: Recommend incubate at RT for 1h. IHC-P: Antigen Retrieval: Steam tissue section in Citrate buffer (pH 6.0). * The dilutions indicate recommended starting dilutions and the optimal dilutions or concentrations should be determined by the scientist.	

### Properties

Form	Liquid
Purification	Purified from goat serum by antigen affinity chromatography.
Buffer	Tris saline (pH 7.3), 0.02% Sodium azide and 0.5% BSA.
Preservative	0.02% Sodium azide
Stabilizer	0.5% BSA
Concentration	0.5 mg/ml
Storage instruction	For continuous use, store undiluted antibody at 2-8°C for up to a week. For long-term storage, aliquot and store at -20°C or below. Storage in frost free freezers is not recommended. Avoid repeated freeze/thaw cycles. Suggest spin the vial prior to opening. The antibody solution should be gently mixed before use.

Bioinformation

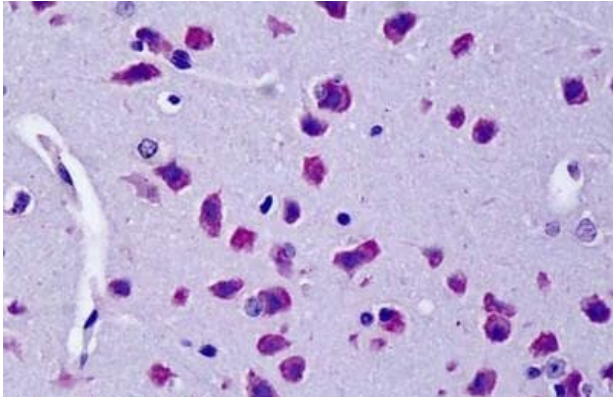
Database links	<a href="#">GeneID: 312937 Rat</a> <a href="#">GeneID: 74256 Mouse</a> <a href="#">Swiss-port # Q66H62 Rat</a> <a href="#">Swiss-port # Q80TQ2 Mouse</a>
Gene Symbol	Cyld
Gene Full Name	cylindromatosis (turban tumor syndrome)
Background	This gene is encodes a cytoplasmic protein with three cytoskeletal-associated protein-glycine-conserved (CAP-GLY) domains that functions as a deubiquitinating enzyme. Mutations in this gene have been associated with cylindromatosis, multiple familial trichoepithelioma, and Brooke-Spiegler syndrome. Alternate transcriptional splice variants, encoding different isoforms, have been characterized. [provided by RefSeq, Jul 2008]
Function	Protease that specifically cleaves 'Lys-63'-linked polyubiquitin chains. Has endodeubiquitinase activity. Plays an important role in the regulation of pathways leading to NF-kappa-B activation. Contributes to the regulation of cell survival, proliferation and differentiation via its effects on NF-kappa-B activation. Negative regulator of Wnt signaling. Inhibits HDAC6 and thereby promotes acetylation of alpha-tubulin and stabilization of microtubules. Plays a role in the regulation of microtubule dynamics, and thereby contributes to the regulation of cell proliferation, cell polarization, cell migration, and angiogenesis. Required for normal cell cycle progress and normal cytokinesis. Inhibits nuclear translocation of NF-kappa-B (By similarity). Plays a role in the regulation of inflammation and the innate immune response, via its effects on NF-kappa-B activation. Dispensable for the maturation of intrathymic natural killer cells, but required for the continued survival of immature natural killer cells. Negatively regulates TNFRSF11A signaling and osteoclastogenesis. Involved in the regulation of ciliogenesis, allowing ciliary basal bodies to migrate and dock to the plasma membrane; this process does not depend on NF-kappa-B activation (PubMed:25134987). [UniProt]
Research Area	Cancer antibody; Cell Biology and Cellular Response antibody; Controls and Markers antibody; Gene Regulation antibody
Calculated Mw	107 kDa
PTM	Phosphorylated on several serine residues by IKKA and/or IKKB in response to immune stimuli. Phosphorylation requires IKBKG. Phosphorylation abolishes TRAF2 deubiquitination, interferes with the activation of Jun kinases, and strongly reduces CD40-dependent gene activation by NF-kappa-B.

Images



ARG64171 anti-Cyld antibody WB image

Western Blot: rat brain lysate (35 µg protein in RIPA buffer) stained with ARG64171 anti-Cyld antibody at 0.5 µg/ml dilution.



ARG64171 anti-Cyld antibody IHC-P image

Immunohistochemistry: Paraffin-embedded Mouse brain tissue.  
Antigen Retrieval: Steam tissue section in Citrate buffer (pH 6.0). The tissue section was stained with ARG64171 anti-Cyld antibody at 5  $\mu$ g/ml dilution followed by AP-staining.