

ARG64222 anti-LARP2 antibody

Package: 100 µg
Store at: -20°C

Summary

Product Description	Goat Polyclonal antibody recognizes LARP2
Tested Reactivity	Hu
Tested Application	FACS, ICC/IF
Specificity	This antibody is expected to recognise isoform 1 (NP_060548.2) only.
Host	Goat
Clonality	Polyclonal
Isotype	IgG
Target Name	LARP2
Species	Human
Immunogen	C-QGVLHIPKKDLTDE
Conjugation	Un-conjugated
Alternate Names	LARP2; La ribonucleoprotein domain family member 2; La-related protein 2; La-related protein 1B; La ribonucleoprotein domain family member 1B

Application Instructions

Application table	Application	Dilution
	FACS	10 µg/ml
	ICC/IF	10 µg/ml
Application Note	* The dilutions indicate recommended starting dilutions and the optimal dilutions or concentrations should be determined by the scientist.	

Properties

Form	Liquid
Purification	Purified from goat serum by antigen affinity chromatography.
Buffer	Tris saline (pH 7.3), 0.02% Sodium azide and 0.5% BSA.
Preservative	0.02% Sodium azide
Stabilizer	0.5% BSA
Concentration	0.5 mg/ml
Storage instruction	For continuous use, store undiluted antibody at 2-8°C for up to a week. For long-term storage, aliquot and store at -20°C or below. Storage in frost free freezers is not recommended. Avoid repeated freeze/thaw cycles. Suggest spin the vial prior to opening. The antibody solution should be gently mixed before use.

Bioinformation

Database links

[GeneID: 55132 Human](#)

[Swiss-port # Q659C4 Human](#)

Background

This gene encodes a protein containing domains found in the La related protein of *Drosophila melanogaster*. La motif-containing proteins are thought to be RNA-binding proteins, where the La motif and adjacent amino acids fold into an RNA recognition motif. The La motif is also found in proteins unrelated to the La protein. Alternative splicing has been observed at this locus and three variants, encoding distinct isoforms, are described. Additional splice variation has been identified but the full-length nature of these transcripts has not been determined. [provided by RefSeq, Jul 2008]

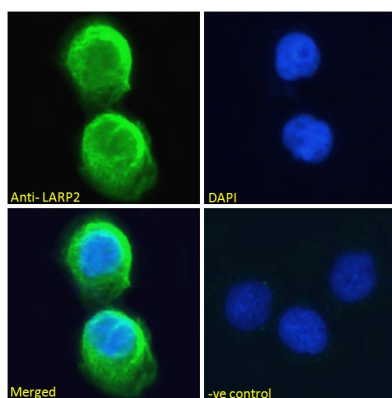
Research Area

Cell Biology and Cellular Response antibody

Calculated Mw

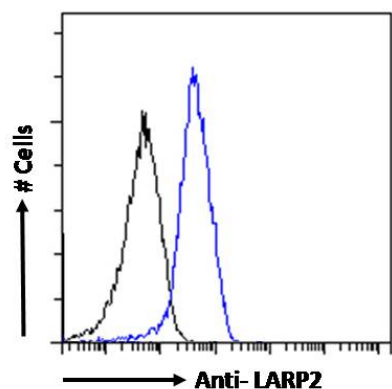
105 kDa

Images



ARG64222 anti-LARP2 antibody ICC/IF image

Immunofluorescence: Paraformaldehyde fixed A431 cells permeabilized with 0.15% Triton. Cells were stained with ARG64222 anti-LARP2 antibody (green) at 10 µg/ml dilution for 1 hour. DAPI (blue) for nuclear staining. Negative control: Unimmunized goat IgG (green) at 10 µg/ml dilution.



ARG64222 anti-LARP2 antibody FACS image

Flow Cytometry: Paraformaldehyde-fixed HepG2 cells permeabilized with 0.5% Triton. Cells were stained with ARG64222 anti-LARP2 antibody (blue line) at 10 µg/ml dilution and overnight, followed by incubation with Alexa FluorR 488 labelled secondary antibody. IgG control: Unimmunized goat IgG (black line).