

ARG64237 anti-PGC1 alpha antibody

Package: 100 µg, 50 µg
Store at: -20°C

Summary

Product Description	Goat Polyclonal antibody recognizes PGC1 alpha
Tested Reactivity	Hu, Ms, Rat
Predict Reactivity	Cow, Dog
Tested Application	FACS, ICC/IF, IHC-P, WB
Host	Goat
Clonality	Polyclonal
Isotype	IgG
Target Name	PGC1 alpha
Species	Human
Immunogen	C-DGLFDDSEDESDK
Conjugation	Un-conjugated
Alternate Names	Ligand effect modulator 6; PGC1; PPARGC-1-alpha; PPARGC1; PGC1A; PPAR-gamma coactivator 1-alpha; PGC-1v; LEM6; PGC-1-alpha; Peroxisome proliferator-activated receptor gamma coactivator 1-alpha; PGC-1(alpha)

Application Instructions

Application table	Application	Dilution
	FACS	Assay - dependent
	ICC/IF	Assay - dependent
	IHC-P	6.0 - 8.0 µg/ml
	WB	1.0 - 3.0 µg/ml
Application Note	WB: Recommend incubate at RT for 1h. * The dilutions indicate recommended starting dilutions and the optimal dilutions or concentrations should be determined by the scientist.	

Properties

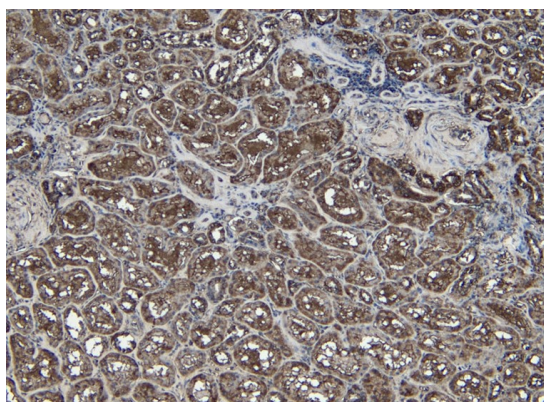
Form	Liquid
Purification	Purified from goat serum by antigen affinity chromatography.
Buffer	Tris saline (pH 7.3), 0.02% Sodium azide and 0.5% BSA.
Preservative	0.02% Sodium azide
Stabilizer	0.5% BSA
Concentration	0.5 mg/ml

Storage instruction	For continuous use, store undiluted antibody at 2-8°C for up to a week. For long-term storage, aliquot and store at -20°C or below. Storage in frost free freezers is not recommended. Avoid repeated freeze/thaw cycles. Suggest spin the vial prior to opening. The antibody solution should be gently mixed before use.
Note	For laboratory research only, not for drug, diagnostic or other use.

Bioinformation

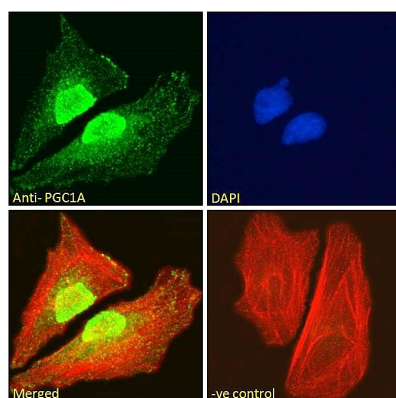
Gene Symbol	PPARGC1A
Gene Full Name	peroxisome proliferator-activated receptor gamma, coactivator 1 alpha
Background	The protein encoded by this gene is a transcriptional coactivator that regulates the genes involved in energy metabolism. This protein interacts with PPARGgamma, which permits the interaction of this protein with multiple transcription factors. This protein can interact with, and regulate the activities of, cAMP response element binding protein (CREB) and nuclear respiratory factors (NRFs). It provides a direct link between external physiological stimuli and the regulation of mitochondrial biogenesis, and is a major factor that regulates muscle fiber type determination. This protein may be also involved in controlling blood pressure, regulating cellular cholesterol homoeostasis, and the development of obesity. [provided by RefSeq, Jul 2008]
Research Area	Cell Biology and Cellular Response antibody; Gene Regulation antibody; Metabolism antibody; Signaling Transduction antibody
Calculated Mw	91 kDa
PTM	Phosphorylation by AMPK in skeletal muscle increases activation of its own promoter. Phosphorylated by CLK2. Heavily acetylated by GCN5 and biologically inactive under conditions of high nutrients. Deacetylated by SIRT1 in low nutrients/high NAD conditions. Ubiquitinated. Ubiquitination by RNF34 induces proteasomal degradation.

Images



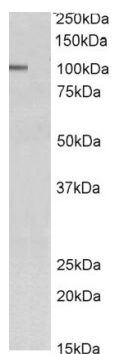
ARG64237 anti-PGC1 alpha antibody IHC-P image

Immunohistochemistry: Human Kidney stained with ARG64237 anti-PGC1 alpha antibody at 6 µg/ml dilution.



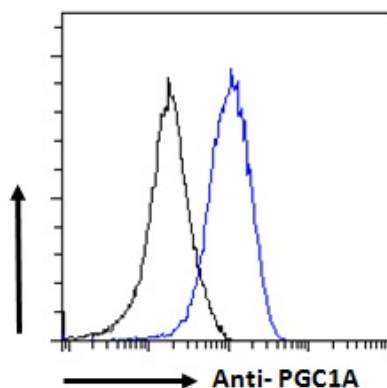
ARG64237 anti-PGC1 alpha antibody ICC/IF image

Immunofluorescence: Paraformaldehyde fixed HeLa cells permeabilized with 0.15% Triton. Cells were stained with ARG64237 anti-PGC1 alpha antibody (green) at 10 µg/ml dilution for 1 hour. DAPI (blue) for nuclear staining. Phalloidin (red) for Actin filaments staining. Negative control: Unimmunized goat IgG (green) at 10 µg/ml dilution.



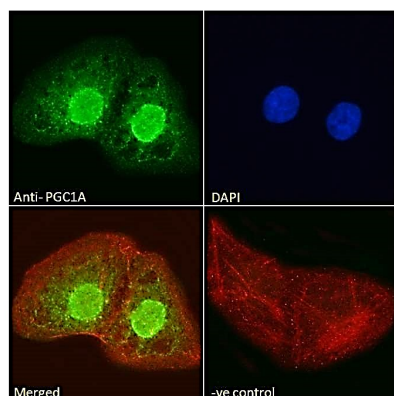
ARG64237 anti-PGC1 alpha antibody WB image

Western blot: 35 µg of Rat duodenum lysate (in RIPA buffer) with (B) and without (A) blocking peptide. The blots were stained with ARG64237 anti-PGC1 alpha antibody at 1.0 µg/ml dilution and incubated at RT for 1 hour.



ARG64237 anti-PGC1 alpha antibody FACS image

Flow Cytometry: Paraformaldehyde-fixed HeLa cells permeabilized with 0.5% Triton. Cells were stained with ARG64237 anti-PGC1 alpha antibody (blue line) at 10 µg/ml dilution for 1 hour, followed by incubation with Alexa FluorR 488 labelled secondary antibody. IgG control: Unimmunized goat IgG (black line).



ARG64237 anti-PGC1 alpha antibody ICC/IF image

Immunofluorescence: Paraformaldehyde fixed U2OS cells permeabilized with 0.15% Triton. Cells were stained with ARG64237 anti-PGC1 alpha antibody (green) at 10 µg/ml dilution for 1 hour. DAPI (blue) for nuclear staining. Phalloidin (red) for Actin filaments staining. Negative control: Unimmunized goat IgG (green) at 10 µg/ml dilution.