

ARG64264 anti-CLIC4 antibody

Package: 100 µg
Store at: -20°C

Summary

Product Description	Goat Polyclonal antibody recognizes CLIC4
Tested Reactivity	Hu, Ms
Predict Reactivity	Dog, Rat
Tested Application	ICC/IF, IHC-P, WB
Host	Goat
Clonality	Polyclonal
Isotype	IgG
Target Name	CLIC4
Species	Human
Immunogen	NGLKEEDKEPLIE-C
Conjugation	Un-conjugated
Alternate Names	Chloride intracellular channel protein 4; MTCLIC; H1; Intracellular chloride ion channel protein p64H1; huH1; p64H1; CLIC4L

Application Instructions

Application table	Application	Dilution
	ICC/IF	5 µg/ml
	IHC-P	5 µg/ml
	WB	0.1 - 0.3 µg/ml
Application Note	WB: Recommend incubate at RT for 1h. IHC-P: Antigen Retrieval: Steam tissue section in Citrate buffer (pH 6.0). * The dilutions indicate recommended starting dilutions and the optimal dilutions or concentrations should be determined by the scientist.	

Properties

Form	Liquid
Purification	Purified from goat serum by antigen affinity chromatography.
Buffer	Tris saline (pH 7.3), 0.02% Sodium azide and 0.5% BSA.
Preservative	0.02% Sodium azide
Stabilizer	0.5% BSA
Concentration	0.5 mg/ml
Storage instruction	For continuous use, store undiluted antibody at 2-8°C for up to a week. For long-term storage, aliquot and store at -20°C or below. Storage in frost free freezers is not recommended. Avoid repeated

freeze/thaw cycles. Suggest spin the vial prior to opening. The antibody solution should be gently mixed before use.

Note

For laboratory research only, not for drug, diagnostic or other use.

Bioinformation

Database links

[GeneID: 25932 Human](#)

[GeneID: 29876 Mouse](#)

[Swiss-port # Q9QYB1 Mouse](#)

[Swiss-port # Q9Y696 Human](#)

Background

Chloride channels are a diverse group of proteins that regulate fundamental cellular processes including stabilization of cell membrane potential, transepithelial transport, maintenance of intracellular pH, and regulation of cell volume. Chloride intracellular channel 4 (CLIC4) protein, encoded by the CLIC4 gene, is a member of the p64 family; the gene is expressed in many tissues and exhibits a intracellular vesicular pattern in Panc-1 cells (pancreatic cancer cells). [provided by RefSeq, Jul 2008]

Research Area

Cell Biology and Cellular Response antibody; Cell Death antibody; Gene Regulation antibody; Metabolism antibody; Signaling Transduction antibody

Calculated Mw

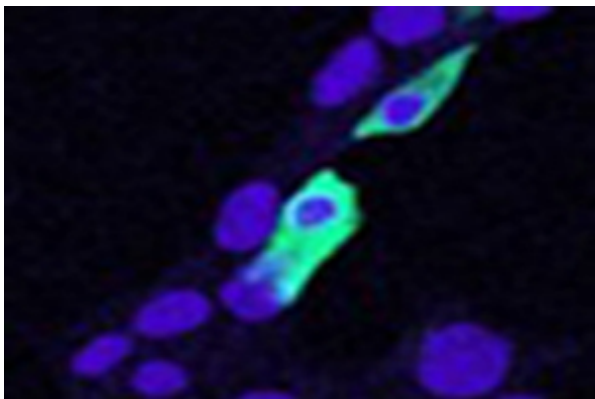
29 kDa

Images



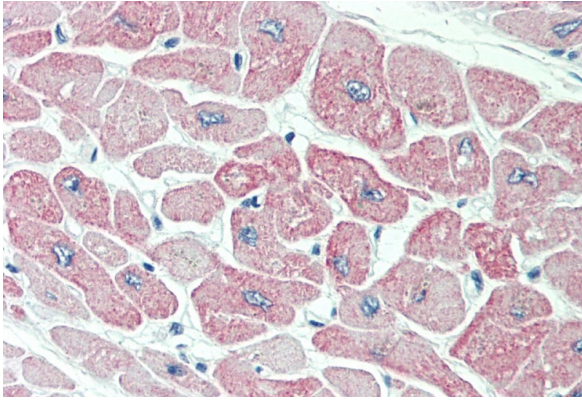
ARG64264 anti-CLIC4 antibody WB image

Western Blot: human kidney lysate (35 µg protein in RIPA buffer) stained with ARG64264 anti-CLIC4 antibody at 0.1 µg/ml dilution.



ARG64264 anti-CLIC4 antibody ICC/IF image

Immunofluorescence: MIN6 cells transiently expressing Mouse Clic4. Cells were stained with ARG64264 anti-CLIC4 antibody at 5 µg/ml dilution. Hoechst (blue) for nuclear staining.



ARG64264 anti-CLIC4 antibody IHC-P image

Immunohistochemistry: Paraffin-embedded Human heart tissue.
Antigen Retrieval: Steam tissue section in Citrate buffer (pH 6.0). The tissue section was stained with ARG64264 anti-CLIC4 antibody at 5 μ g/ml dilution followed by AP-staining.