

## ARG64268 anti-PPID / Cyclophilin 40 antibody

Package: 100 µg  
Store at: -20°C

### Summary

Product Description	Goat Polyclonal antibody recognizes PPID / Cyclophilin 40
Tested Reactivity	Hu
Predict Reactivity	Ms, Rat, Dog
Tested Application	WB
Host	Goat
Clonality	Polyclonal
Isotype	IgG
Target Name	PPID / Cyclophilin 40
Species	Human
Immunogen	C-DENFHYKHDREG
Conjugation	Un-conjugated
Alternate Names	CYPD; 40 kDa peptidyl-prolyl cis-trans isomerase; PPIase D; CYP-40; Cyclophilin-40; EC 5.2.1.8; Peptidyl-prolyl cis-trans isomerase D; Rotamase D; Cyclophilin-related protein

### Application Instructions

Application table	Application	Dilution
	WB	0.1 - 0.3 µg/ml
Application Note	WB: Recommend incubate at RT for 1h. * The dilutions indicate recommended starting dilutions and the optimal dilutions or concentrations should be determined by the scientist.	

### Properties

Form	Liquid
Purification	Purified from goat serum by antigen affinity chromatography.
Buffer	Tris saline (pH 7.3), 0.02% Sodium azide and 0.5% BSA.
Preservative	0.02% Sodium azide
Stabilizer	0.5% BSA
Concentration	0.5 mg/ml
Storage instruction	For continuous use, store undiluted antibody at 2-8°C for up to a week. For long-term storage, aliquot and store at -20°C or below. Storage in frost free freezers is not recommended. Avoid repeated freeze/thaw cycles. Suggest spin the vial prior to opening. The antibody solution should be gently mixed before use.
Note	For laboratory research only, not for drug, diagnostic or other use.

Bioinformation

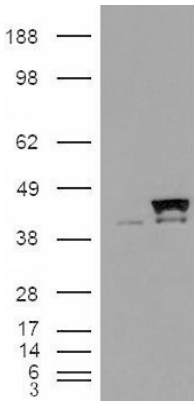
Database links	<a href="#">GeneID: 5481 Human</a> <a href="#">Swiss-port # Q08752 Human</a>
Background	The protein encoded by this gene is a member of the peptidyl-prolyl cis-trans isomerase (PPIase) family. PPIases catalyze the cis-trans isomerization of proline imidic peptide bonds in oligopeptides and accelerate the folding of proteins. This protein has been shown to possess PPIase activity and, similar to other family members, can bind to the immunosuppressant cyclosporin A. [provided by RefSeq, Jul 2008]
Research Area	Cell Biology and Cellular Response antibody; Immune System antibody
Calculated Mw	41 kDa

Images



ARG64268 anti-PPID / Cyclophilin 40 antibody WB image

Western blot: Human Brain (Frontal Cortex) lysate (35 µg protein in RIPA buffer) stained with ARG64268 anti-PPID / Cyclophilin 40 antibody at 0.1 µg/ml dilution.



ARG64268 anti-PPID / Cyclophilin 40 antibody WB image

Western blot: 1). Mock transfection; 2) CyP-40 (RC206039) expressing plasmid transfected HEK293 cell lysate stained with ARG64268 anti-PPID / Cyclophilin 40 antibody.