

## ARG64271 anti-RPL8 antibody

Package: 100 µg  
Store at: -20°C

### Summary

|                     |  |
|---------------------|--|
| Product Description | Goat Polyclonal antibody recognizes RPL8   |
| Tested Reactivity   | Hu   |
| Predict Reactivity  | Ms, Rat, Dog   |
| Tested Application  | IHC-P, WB  |
| Specificity         | The reported variants represent identical protein (NP_000964.1 and NP_150644.1). |
| Host                | Goat   |
| Clonality           | Polyclonal   |
| Isotype             | IgG  |
| Target Name         | RPL8   |
| Species             | Human  |
| Immunogen           | KAGRAYHKYKAKRNC  |
| Conjugation         | Un-conjugated  |
| Alternate Names     | 60S ribosomal protein L8; L8   |

### Application Instructions

|                   |  |                   |
|-------------------|--|-------------------|
| Application table | Application  | Dilution          |
|                   | IHC-P  | 2.5 µg/ml         |
|                   | WB   | 0.01 - 0.03 µg/ml |
| Application Note  | WB: Recommend incubate at RT for 1h.<br>IHC-P: Antigen Retrieval: Steam tissue section in Citrate buffer (pH 6.0).<br>* The dilutions indicate recommended starting dilutions and the optimal dilutions or concentrations should be determined by the scientist. |                   |

### Properties

|                     |  |
|---------------------|--|
| Form                | Liquid   |
| Purification        | Purified from goat serum by antigen affinity chromatography.   |
| Buffer              | Tris saline (pH 7.3), 0.02% Sodium azide and 0.5% BSA.   |
| Preservative        | 0.02% Sodium azide   |
| Stabilizer          | 0.5% BSA   |
| Concentration       | 0.5 mg/ml  |
| Storage instruction | For continuous use, store undiluted antibody at 2-8°C for up to a week. For long-term storage, aliquot and store at -20°C or below. Storage in frost free freezers is not recommended. Avoid repeated freeze/thaw cycles. Suggest spin the vial prior to opening. The antibody solution should be gently mixed |

before use.

#### Note

For laboratory research only, not for drug, diagnostic or other use.

## Bioinformation

#### Database links

[GeneID: 6132 Human](#)

[Swiss-port # P62917 Human](#)

#### Background

Ribosomes, the organelles that catalyze protein synthesis, consist of a small 40S subunit and a large 60S subunit. Together these subunits are composed of 4 RNA species and approximately 80 structurally distinct proteins. This gene encodes a ribosomal protein that is a component of the 60S subunit. The protein belongs to the L2P family of ribosomal proteins. It is located in the cytoplasm. In rat, the protein associates with the 5.8S rRNA, very likely participates in the binding of aminoacyl-tRNA, and is a constituent of the elongation factor 2-binding site at the ribosomal subunit interface. Alternatively spliced transcript variants encoding the same protein exist. As is typical for genes encoding ribosomal proteins, there are multiple processed pseudogenes of this gene dispersed through the genome. [provided by RefSeq, Jul 2008]

#### Research Area

Gene Regulation antibody

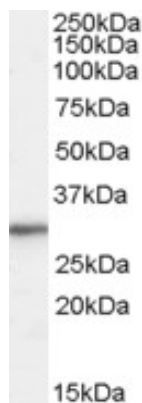
#### Calculated Mw

28 kDa

#### PTM

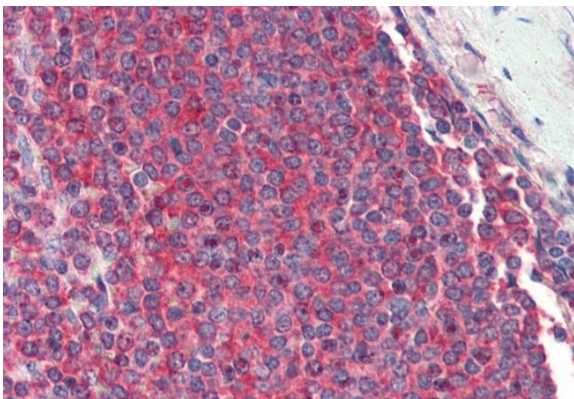
Hydroxylated on His-216 by RIOX1. The modification is impaired by hypoxia.

## Images



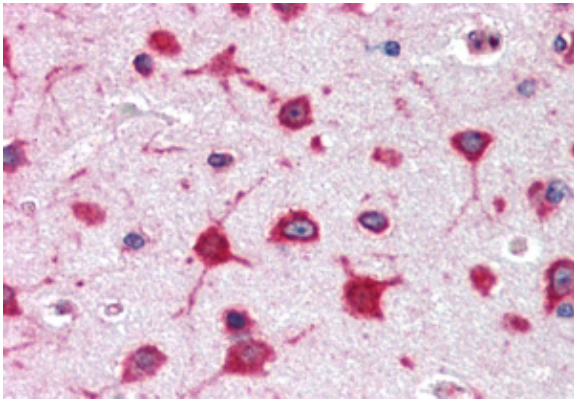
ARG64271 anti-RPL8 antibody WB image

Western blot: HepG2 cell lysate (35 µg protein in RIPA buffer) stained with ARG64271 anti-RPL8 antibody at 0.01 µg/ml dilution.



ARG64271 anti-RPL8 antibody IHC-P image

Immunohistochemistry: Paraffin-embedded Human spleen tissue. Antigen Retrieval: Steam tissue section in Citrate buffer (pH 6.0). The tissue section was stained with ARG64271 anti-RPL8 antibody at 2.5 µg/ml dilution followed by AP-staining.



#### ARG64271 anti-RPL8 antibody IHC-P image

Immunohistochemistry: Paraffin embedded Human Cerebral Cortex. (Steamed antigen retrieval with citrate buffer pH 6) stained with ARG64271 anti-RPL8 antibody at 2.5 µg/ml dilution followed by AP-staining.