

ARG64276 anti-SMEK1 / KIAA2010 antibody

Package: 100 µg
Store at: -20°C

Summary

Product Description	Goat Polyclonal antibody recognizes SMEK1 / KIAA2010
Tested Reactivity	Hu
Predict Reactivity	Ms, Rat, Dog
Tested Application	WB
Host	Goat
Clonality	Polyclonal
Isotype	IgG
Target Name	SMEK1 / KIAA2010
Species	Human
Immunogen	C-EQQRERQDNPKLD
Conjugation	Un-conjugated
Alternate Names	FLFL1; SMEK homolog 1; PP4R3A; smk1; Serine/threonine-protein phosphatase 4 regulatory subunit 3A; SMEK1; MSTP033; smk-1; PP4R3; KIAA2010

Application Instructions

Application table	Application	Dilution
	WB	0.3 - 1 µg/ml
Application Note	WB: Recommend incubate at RT for 1h. * The dilutions indicate recommended starting dilutions and the optimal dilutions or concentrations should be determined by the scientist.	

Properties

Form	Liquid
Purification	Purified from goat serum by antigen affinity chromatography.
Buffer	Tris saline (pH 7.3), 0.02% Sodium azide and 0.5% BSA.
Preservative	0.02% Sodium azide
Stabilizer	0.5% BSA
Concentration	0.5 mg/ml
Storage instruction	For continuous use, store undiluted antibody at 2-8°C for up to a week. For long-term storage, aliquot and store at -20°C or below. Storage in frost free freezers is not recommended. Avoid repeated freeze/thaw cycles. Suggest spin the vial prior to opening. The antibody solution should be gently mixed before use.
Note	For laboratory research only, not for drug, diagnostic or other use.

Bioinformation

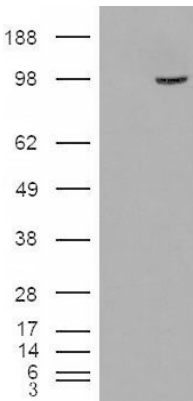
Database links	GeneID: 55671 Human Swiss-port # Q6IN85 Human
Gene Symbol	SMEK1
Gene Full Name	SMEK homolog 1, suppressor of mek1 (Dictyostelium)
Function	Regulatory subunit of serine/threonine-protein phosphatase 4. May regulate the activity of PPP4C at centrosomal microtubule organizing centers. The PPP4C-PPP4R2-PPP4R3A PP4 complex specifically dephosphorylates H2AFX phosphorylated on 'Ser-140' (gamma-H2AFX) generated during DNA replication and required for DNA DSB repair. [UniProt]
Research Area	Gene Regulation antibody
Calculated Mw	95 kDa

Images



ARG64276 anti-SMEK1 / KIAA2010 antibody WB image

Western Blot: Human Pancreas lysate (35 µg protein in RIPA buffer) stained with ARG64276 anti-SMEK1 / KIAA2010 antibody at 0.3 µg/ml dilution.



ARG64276 anti-SMEK1 / KIAA2010 antibody WB image

Western Blot: 1). Mock transfection; 2) SMEK1 (RC221040) expressing plasmid transfected HEK293 cell lysate stained with ARG64276 anti-SMEK1 / KIAA2010 antibody