

ARG64286 anti-LDHC antibody

Package: 100 µg
Store at: -20°C

Summary

Product Description	Goat Polyclonal antibody recognizes LDHC
Tested Reactivity	Ms
Predict Reactivity	Hu
Tested Application	IHC-P, WB
Specificity	Both variants represent identical product (NP_002292.1 and NP_059144.1).
Host	Goat
Clonality	Polyclonal
Isotype	IgG
Target Name	LDHC
Species	Human
Immunogen	C-KLGTDSKKEHWKNIH
Conjugation	Un-conjugated
Alternate Names	LDH-X; LDHX; Cancer/testis antigen 32; L-lactate dehydrogenase C chain; LDH3; EC 1.1.1.27; LDH-C; CT32; LDH testis subunit

Application Instructions

Application table	Application	Dilution
	IHC-P	1 µg/ml
	WB	0.03 - 0.1 µg/ml

Application Note WB: Recommend incubate at RT for 1h.
* The dilutions indicate recommended starting dilutions and the optimal dilutions or concentrations should be determined by the scientist.

Properties

Form	Liquid
Purification	Purified from goat serum by antigen affinity chromatography.
Buffer	Tris saline (pH 7.3), 0.02% Sodium azide and 0.5% BSA.
Preservative	0.02% Sodium azide
Stabilizer	0.5% BSA
Concentration	0.5 mg/ml
Storage instruction	For continuous use, store undiluted antibody at 2-8°C for up to a week. For long-term storage, aliquot and store at -20°C or below. Storage in frost free freezers is not recommended. Avoid repeated freeze/thaw cycles. Suggest spin the vial prior to opening. The antibody solution should be gently mixed

before use.

Note

For laboratory research only, not for drug, diagnostic or other use.

Bioinformation

Database links

[GeneID: 16833 Mouse](#)

[Swiss-port # P00342 Mouse](#)

Background

Lactate dehydrogenase C catalyzes the conversion of L-lactate and NAD to pyruvate and NADH in the final step of anaerobic glycolysis. LDHC is testis-specific and belongs to the lactate dehydrogenase family. Two transcript variants have been detected which differ in the 5' untranslated region. [provided by RefSeq, Jul 2008]

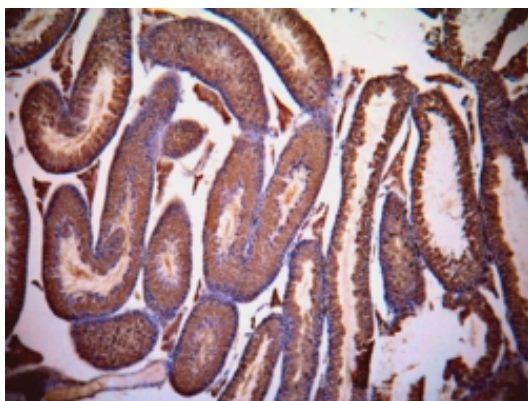
Research Area

Cancer antibody; Metabolism antibody; Signaling Transduction antibody

Calculated Mw

36 kDa

Images



ARG64286 anti-LDHC antibody IHC-P image

Immunohistochemistry: Mouse Testis stained with ARG64286 anti-LDHC antibody at 1 µg/ml dilution.



ARG64286 anti-LDHC antibody WB image

Western Blot: Mouse Testis lysate (35 µg protein in RIPA buffer) stained with ARG64286 anti-LDHC antibody at 0.03 µg/ml dilution.