

## ARG64290 anti-EGR2 antibody

Package: 100 µg  
Store at: -20°C

### Summary

Product Description	Goat Polyclonal antibody recognizes EGR2
Tested Reactivity	Hu
Predict Reactivity	Ms, Rat, Dog
Tested Application	IHC-P, WB
Host	Goat
Clonality	Polyclonal
Isotype	IgG
Target Name	EGR2
Species	Human
Immunogen	HGTAGPDRKPFPC
Conjugation	Un-conjugated
Alternate Names	KROX20; Zinc finger protein Krox-20; EC 6.3.2.-; CMT1D; Early growth response protein 2; EGR-2; AT591; E3 SUMO-protein ligase EGR2; CMT4E

### Application Instructions

Application table	Application	Dilution
	IHC-P	Assay - dependent
	WB	2 - 6 µg/ml
Application Note	WB: Recommend incubate at RT for 1h. IHC-P: Antigen Retrieval: Steam tissue section in Citrate buffer (pH 6.0). * The dilutions indicate recommended starting dilutions and the optimal dilutions or concentrations should be determined by the scientist.	

### Properties

Form	Liquid
Purification	Purified from goat serum by antigen affinity chromatography.
Buffer	Tris saline (pH 7.3), 0.02% Sodium azide and 0.5% BSA.
Preservative	0.02% Sodium azide
Stabilizer	0.5% BSA
Concentration	0.5 mg/ml
Storage instruction	For continuous use, store undiluted antibody at 2-8°C for up to a week. For long-term storage, aliquot and store at -20°C or below. Storage in frost free freezers is not recommended. Avoid repeated freeze/thaw cycles. Suggest spin the vial prior to opening. The antibody solution should be gently mixed

before use.

Note

For laboratory research only, not for drug, diagnostic or other use.

## Bioinformation

Database links

[GeneID: 1959 Human](#)

[Swiss-port # P11161 Human](#)

Background

The protein encoded by this gene is a transcription factor with three tandem C2H2-type zinc fingers. Defects in this gene are associated with Charcot-Marie-Tooth disease type 1D (CMT1D), Charcot-Marie-Tooth disease type 4E (CMT4E), and with Dejerine-Sottas syndrome (DSS). Multiple transcript variants encoding two different isoforms have been found for this gene. [provided by RefSeq, Oct 2008]

Research Area

Gene Regulation antibody; Neuroscience antibody

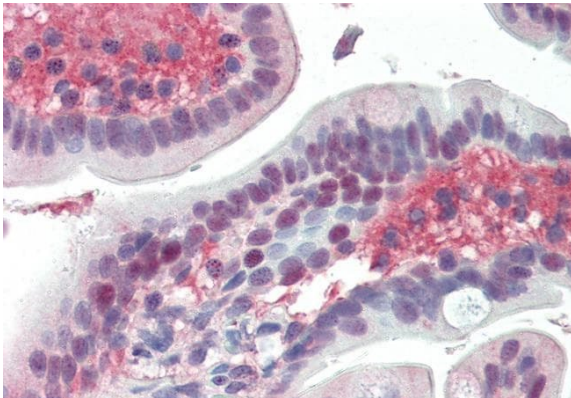
Calculated Mw

50 kDa

PTM

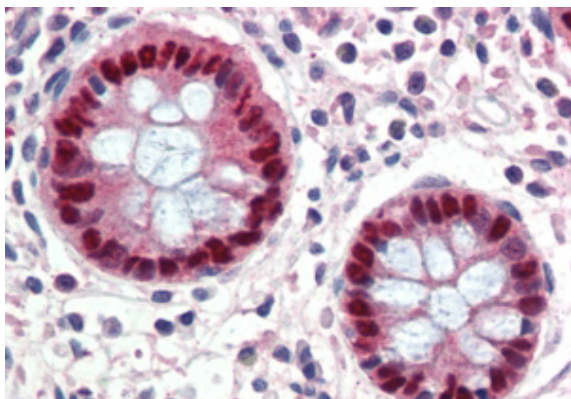
Ubiquitinated by WWP2 leading to proteasomal degradation.

## Images



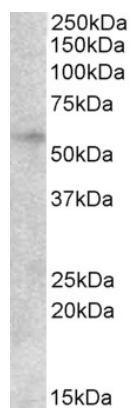
ARG64290 anti-EGR2 antibody IHC-P image

Immunohistochemistry: Paraffin-embedded Human small intestine tissue. Antigen Retrieval: Steam tissue section in Citrate buffer (pH 6.0). The tissue section was stained with ARG64290 anti-EGR2 antibody at 3.8 µg/ml dilution followed by AP-staining.



ARG64290 anti-EGR2 antibody IHC-P image

Immunohistochemistry: paraffin embedded Human Colon. (Steamed antigen retrieval with citrate buffer pH 6) stained with ARG64290 anti-EGR2 antibody at 3.8 µg/ml dilution followed by AP-staining.



#### ARG64290 anti-EGR2 antibody WB image

Western blot: 35 µg of HepG2 cell lysate (in RIPA buffer) stained with ARG64290 anti-EGR2 antibody at 2 µg/ml dilution and incubated at RT for 1 hour.