

## ARG64292 anti-LDHC antibody

Package: 100 µg  
Store at: -20°C

### Summary

Product Description	Goat Polyclonal antibody recognizes LDHC
Tested Reactivity	Ms
Predict Reactivity	Hu
Tested Application	WB
Specificity	Both variants represent identical product (NP_002292.1 and NP_059144.1).
Host	Goat
Clonality	Polyclonal
Isotype	IgG
Target Name	LDHC
Species	Human
Immunogen	C-DSDKEHWKNVHKQ
Conjugation	Un-conjugated
Alternate Names	LDH-X; LDHX; Cancer/testis antigen 32; L-lactate dehydrogenase C chain; LDH3; EC 1.1.1.27; LDH-C; CT32; LDH testis subunit

### Application Instructions

Application table	Application	Dilution
	WB	0.3 - 1 µg/ml
Application Note	WB: Recommend incubate at RT for 1h. * The dilutions indicate recommended starting dilutions and the optimal dilutions or concentrations should be determined by the scientist.	

### Properties

Form	Liquid
Purification	Purified from goat serum by antigen affinity chromatography.
Buffer	Tris saline (pH 7.3), 0.02% Sodium azide and 0.5% BSA.
Preservative	0.02% Sodium azide
Stabilizer	0.5% BSA
Concentration	0.5 mg/ml
Storage instruction	For continuous use, store undiluted antibody at 2-8°C for up to a week. For long-term storage, aliquot and store at -20°C or below. Storage in frost free freezers is not recommended. Avoid repeated freeze/thaw cycles. Suggest spin the vial prior to opening. The antibody solution should be gently mixed before use.

Note For laboratory research only, not for drug, diagnostic or other use.

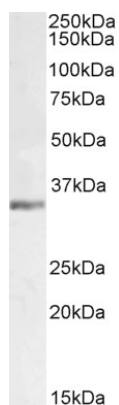
## Bioinformation

---

Database links	<a href="#">GeneID: 16833 Mouse</a> <a href="#">Swiss-port # P00342 Mouse</a>
Background	Lactate dehydrogenase C catalyzes the conversion of L-lactate and NAD to pyruvate and NADH in the final step of anaerobic glycolysis. LDHC is testis-specific and belongs to the lactate dehydrogenase family. Two transcript variants have been detected which differ in the 5' untranslated region. [provided by RefSeq, Jul 2008]
Research Area	Cancer antibody; Metabolism antibody; Signaling Transduction antibody
Calculated Mw	36 kDa

## Images

---



ARG64292 anti-LDHC antibody WB image

Western blot: 35 µg of Mouse testis lysate (in RIPA buffer) stained with ARG64292 anti-LDHC antibody at 1 µg/ml dilution and incubated at RT for 1 hour.