

## ARG64295 anti-TPD52L2 / D54 antibody

Package: 100 µg  
Store at: -20°C

### Summary

Product Description	Goat Polyclonal antibody recognizes TPD52L2 / D54
Tested Reactivity	Hu
Tested Application	IHC-P, WB
Specificity	This antibody is expected to recognise all reported isoforms (NP_955392.1; NP_955393.1; NP_955394.1; NP_955395.1; NP_003279.2; NP_955391.1).
Host	Goat
Clonality	Polyclonal
Isotype	IgG
Target Name	TPD52L2 / D54
Species	Human
Immunogen	C-SGDKPLSDPAP
Conjugation	Un-conjugated
Alternate Names	Tumor protein D52-like 2; hD54; D54; Tumor protein D54; TPD54

### Application Instructions

Application table	Application	Dilution
	IHC-P	3 - 5 µg/ml
	WB	0.1 - 0.3 µg/ml
Application Note	WB: Recommend incubate at RT for 1h. IHC-P: Antigen Retrieval: Steam tissue section in Citrate buffer (pH 6.0). * The dilutions indicate recommended starting dilutions and the optimal dilutions or concentrations should be determined by the scientist.	

### Properties

Form	Liquid
Purification	Purified from goat serum by antigen affinity chromatography.
Buffer	Tris saline (pH 7.3), 0.02% Sodium azide and 0.5% BSA.
Preservative	0.02% Sodium azide
Stabilizer	0.5% BSA
Concentration	0.5 mg/ml
Storage instruction	For continuous use, store undiluted antibody at 2-8°C for up to a week. For long-term storage, aliquot and store at -20°C or below. Storage in frost free freezers is not recommended. Avoid repeated freeze/thaw cycles. Suggest spin the vial prior to opening. The antibody solution should be gently mixed

before use.

#### Note

For laboratory research only, not for drug, diagnostic or other use.

## Bioinformation

#### Database links

[GeneID: 7165 Human](#)

[Swiss-port # O43399 Human](#)

#### Background

This gene encodes a member of the tumor protein D52-like family. These proteins are characterized by an N-terminal coiled-coil motif that is used to form homo- and heteromeric complexes with other tumor protein D52-like proteins. Expression of this gene may be a marker for breast cancer and acute lymphoblastic leukemia. Alternatively spliced transcript variants encoding multiple isoforms have been observed for this gene, and a pseudogene of this gene is located on the long arm of chromosome 12. [provided by RefSeq, Aug 2011]

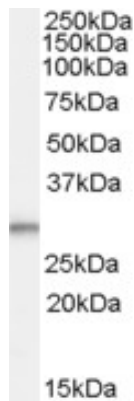
#### Research Area

Cancer antibody; Cell Biology and Cellular Response antibody

#### Calculated Mw

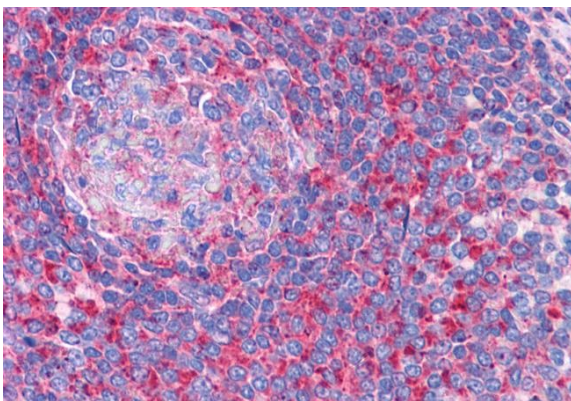
22 kDa

## Images



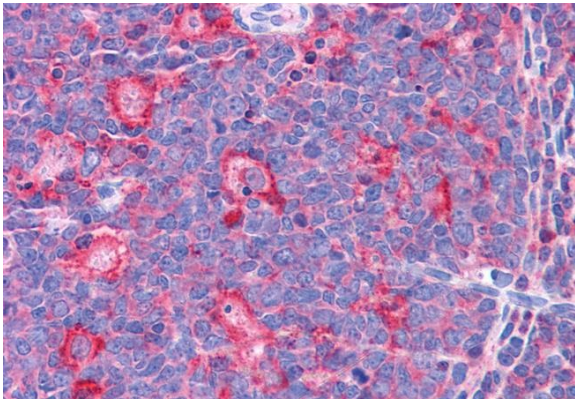
ARG64295 anti-TPD52L2 / D54 antibody WB image

Western Blot: Human Breast Cancer lysate (35 µg protein in RIPA buffer) stained with ARG64295 anti-TPD52L2 / D54 antibody at 0.1 µg/ml dilution.



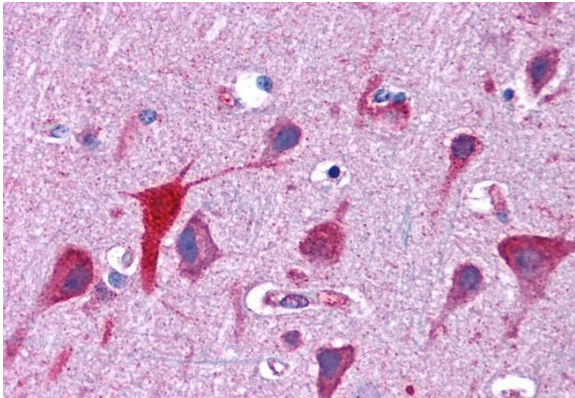
ARG64295 anti-TPD52L2 / D54 antibody IHC-P image

Immunohistochemistry: Paraffin-embedded Human spleen tissue. Antigen Retrieval: Steam tissue section in Citrate buffer (pH 6.0). The tissue section was stained with ARG64295 anti-TPD52L2 / D54 antibody at 3.75 µg/ml dilution followed by AP-staining.



ARG64295 anti-TPD52L2 / D54 antibody IHC-P image

Immunohistochemistry: Paraffin-embedded Human tonsil tissue.  
Antigen Retrieval: Steam tissue section in Citrate buffer (pH 6.0). The tissue section was stained with ARG64295 anti-TPD52L2 / D54 antibody at 3.75 µg/ml dilution followed by AP-staining.



ARG64295 anti-TPD52L2 / D54 antibody IHC-P image

Immunohistochemistry: Paraffin-embedded Human cortex tissue.  
Antigen Retrieval: Steam tissue section in Citrate buffer (pH 6.0). The tissue section was stained with ARG64295 anti-TPD52L2 / D54 antibody at 3.75 µg/ml dilution followed by AP-staining.