

## ARG64346 anti-SLC12A4 / KCC1 antibody

Package: 100 µg  
Store at: -20°C

### Summary

Product Description	Goat Polyclonal antibody recognizes SLC12A4 / KCC1
Tested Reactivity	Hu
Predict Reactivity	Ms, Rat, Dog
Tested Application	IHC-P, WB
Host	Goat
Clonality	Polyclonal
Isotype	IgG
Target Name	SLC12A4 / KCC1
Species	Human
Immunogen	C-DPSHAPDNFRE
Conjugation	Un-conjugated
Alternate Names	KCC1; Electroneutral potassium-chloride cotransporter 1; hKCC1; Erythroid K-Cl cotransporter 1; Solute carrier family 12 member 4

### Application Instructions

Application table	Application	Dilution
	IHC-P	5 µg/ml
	WB	0.3 - 1 µg/ml
Application Note	WB: Recommend incubate at RT for 1h. IHC-P: Antigen Retrieval: Steam tissue section in Citrate buffer (pH 6.0). * The dilutions indicate recommended starting dilutions and the optimal dilutions or concentrations should be determined by the scientist.	

### Properties

Form	Liquid
Purification	Purified from goat serum by antigen affinity chromatography.
Buffer	Tris saline (pH 7.3), 0.02% Sodium azide and 0.5% BSA.
Preservative	0.02% Sodium azide
Stabilizer	0.5% BSA
Concentration	0.5 mg/ml
Storage instruction	For continuous use, store undiluted antibody at 2-8°C for up to a week. For long-term storage, aliquot and store at -20°C or below. Storage in frost free freezers is not recommended. Avoid repeated freeze/thaw cycles. Suggest spin the vial prior to opening. The antibody solution should be gently mixed

before use.

#### Note

For laboratory research only, not for drug, diagnostic or other use.

## Bioinformation

#### Database links

[GeneID: 6560 Human](#)

[Swiss-port # Q9UP95 Human](#)

#### Background

This gene encodes a member of the SLC12A transporter family. The encoded protein mediates the coupled movement of potassium and chloride ions across the plasma membrane. This gene is expressed ubiquitously. Multiple alternatively spliced transcript variants encoding distinct isoforms have been found for this gene. [provided by RefSeq, Jan 2013]

#### Research Area

Metabolism antibody; Signaling Transduction antibody

#### Calculated Mw

121 kDa

#### PTM

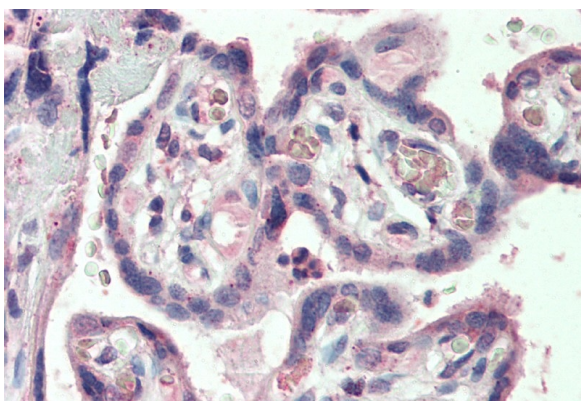
N-glycosylated.

## Images



ARG64346 anti-SLC12A4 / KCC1 antibody WB image

Western blot: Human Heart lysate (35 µg protein in RIPA buffer) stained with ARG64346 anti-SLC12A4 / KCC1 antibody at 0.3 µg/ml dilution.



ARG64346 anti-SLC12A4 / KCC1 antibody IHC-P image

Immunohistochemistry: Paraffin-embedded Human placenta tissue. Antigen Retrieval: Steam tissue section in Citrate buffer (pH 6.0). The tissue section was stained with ARG64346 anti-SLC12A4 / KCC1 antibody at 5 µg/ml dilution followed by AP-staining.