

## ARG64351 anti-KCC3 / SLC12A6 antibody

Package: 100 µg  
Store at: -20°C

### Summary

Product Description	Goat Polyclonal antibody recognizes KCC3 / SLC12A6
Tested Reactivity	Hu
Tested Application	IHC-P, WB
Specificity	This antibody is expected to recognise all 6 reported isoforms (NP_598408.1; NP_005126.1; NP_001035959.1; NP_001035960.1; NP_001035961.1; NP_001035962.1; );
Host	Goat
Clonality	Polyclonal
Isotype	IgG
Target Name	KCC3 / SLC12A6
Species	Human
Immunogen	SRHIDVCSKTKE
Conjugation	Un-conjugated
Alternate Names	ACCPN; K-Cl cotransporter 3; Electroneutral potassium-chloride cotransporter 3; Solute carrier family 12 member 6; KCC3A; KCC3B; KCC3

### Application Instructions

Application table	Application	Dilution
	IHC-P	2 - 4 µg/ml
	WB	0.1 - 0.3 µg/ml
Application Note	IHC-P: Antigen Retrieval: Steam tissue section in Citrate buffer (pH 6.0). WB: Recommend incubate at RT for 1h. * The dilutions indicate recommended starting dilutions and the optimal dilutions or concentrations should be determined by the scientist.	

### Properties

Form	Liquid
Purification	Purified from goat serum by antigen affinity chromatography.
Buffer	Tris saline (pH 7.3), 0.02% Sodium azide and 0.5% BSA.
Preservative	0.02% Sodium azide
Stabilizer	0.5% BSA
Concentration	0.5 mg/ml
Storage instruction	For continuous use, store undiluted antibody at 2-8°C for up to a week. For long-term storage, aliquot and store at -20°C or below. Storage in frost free freezers is not recommended. Avoid repeated

freeze/thaw cycles. Suggest spin the vial prior to opening. The antibody solution should be gently mixed before use.

Note

For laboratory research only, not for drug, diagnostic or other use.

## Bioinformation

Database links

[GeneID: 9990 Human](#)

[Swiss-port # Q9UHW9 Human](#)

Background

This gene is a member of the K-Cl cotransporter (KCC) family. K-Cl cotransporters are integral membrane proteins that lower intracellular chloride concentrations below the electrochemical equilibrium potential. The proteins encoded by this gene are activated by cell swelling induced by hypotonic conditions. Alternate splicing results in multiple transcript variants encoding different isoforms. Mutations in this gene are associated with agenesis of the corpus callosum with peripheral neuropathy. [provided by RefSeq, Jul 2008]

Research Area

Neuroscience antibody

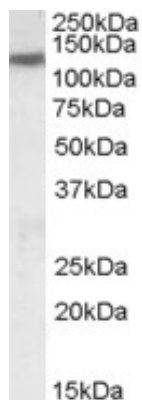
Calculated Mw

128 kDa

PTM

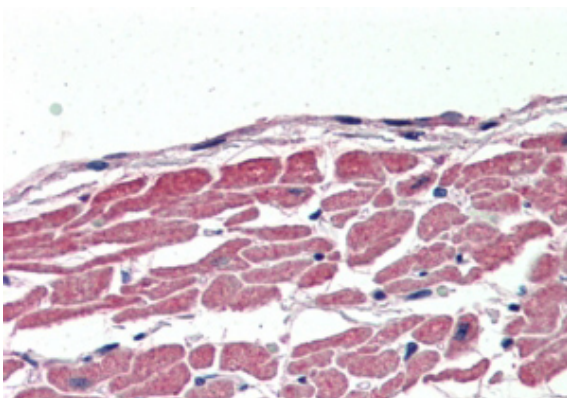
N-glycosylated.

## Images



ARG64351 anti-KCC3 / SLC12A6 antibody WB image

Western Blot: Human Heart lysate (35 µg protein in RIPA buffer) stained with ARG64351 anti-KCC3 / SLC12A6 antibody at 0.1 µg/ml dilution.



ARG64351 anti-KCC3 / SLC12A6 antibody IHC-P image

Immunohistochemistry: paraffin embedded Human Heart. (Steamed antigen retrieval with citrate buffer pH 6) stained with ARG64351 anti-KCC3 / SLC12A6 antibody at 2.5 µg/ml dilution followed by AP-staining.