

## ARG64375 anti-PRRX1 antibody

Package: 100 µg  
Store at: -20°C

### Summary

Product Description	Goat Polyclonal antibody recognizes PRRX1
Tested Reactivity	Hu
Predict Reactivity	Ms
Tested Application	IHC-P, WB
Specificity	This antibody is expected to recognise both reported isoforms (NP_008833.1; NP_073207.1).
Host	Goat
Clonality	Polyclonal
Isotype	IgG
Target Name	PRRX1
Species	Human
Immunogen	C-GSDTPQQDNDQ
Conjugation	Un-conjugated
Alternate Names	Paired mesoderm homeobox protein 1; PRX-1; PRX1; AGOTC; Homeobox protein PHOX1; PHOX1; Paired-related homeobox protein 1; PMX1

### Application Instructions

Application table	Application	Dilution
	IHC-P	Assay - dependent
	WB	0.3 - 1 µg/ml
Application Note	WB: Recommend incubate at RT for 1h. IHC-P: Antigen Retrieval: Steam tissue section in Citrate buffer (pH 6.0). * The dilutions indicate recommended starting dilutions and the optimal dilutions or concentrations should be determined by the scientist.	

### Properties

Form	Liquid
Purification	Purified from goat serum by antigen affinity chromatography.
Buffer	Tris saline (pH 7.3), 0.02% Sodium azide and 0.5% BSA.
Preservative	0.02% Sodium azide
Stabilizer	0.5% BSA
Concentration	0.5 mg/ml
Storage instruction	For continuous use, store undiluted antibody at 2-8°C for up to a week. For long-term storage, aliquot and store at -20°C or below. Storage in frost free freezers is not recommended. Avoid repeated

freeze/thaw cycles. Suggest spin the vial prior to opening. The antibody solution should be gently mixed before use.

Note

For laboratory research only, not for drug, diagnostic or other use.

## Bioinformation

Database links

[GeneID: 5396 Human](#)

[Swiss-port # P54821 Human](#)

Background

The DNA-associated protein encoded by this gene is a member of the paired family of homeobox proteins localized to the nucleus. The protein functions as a transcription co-activator, enhancing the DNA-binding activity of serum response factor, a protein required for the induction of genes by growth and differentiation factors. The protein regulates muscle creatine kinase, indicating a role in the establishment of diverse mesodermal muscle types. Alternative splicing yields two isoforms that differ in abundance and expression patterns. [provided by RefSeq, Jul 2008]

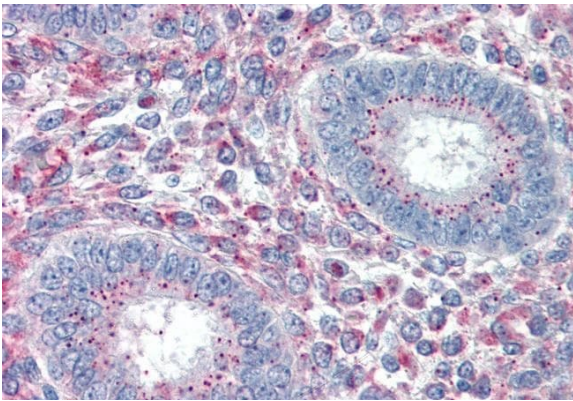
Research Area

Gene Regulation antibody

Calculated Mw

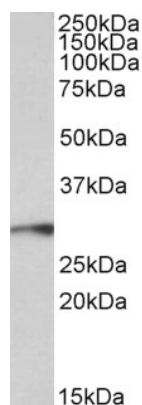
27 kDa

## Images



ARG64375 anti-PRRX1 antibody IHC-P image

Immunohistochemistry: Paraffin-embedded Human uterus tissue. Antigen Retrieval: Steam tissue section in Citrate buffer (pH 6.0). The tissue section was stained with ARG64375 anti-PRRX1 antibody at 5 µg/ml dilution followed by AP-staining.



ARG64375 anti-PRRX1 antibody WB image

Western blot: 35 µg of Human muscle lysate (in RIPA buffer) stained with ARG64375 anti-PRRX1 antibody at 0.3 µg/ml dilution and incubated at RT for 1 hour.