

## ARG64395 anti-FAIM1 antibody

Package: 100 µg  
Store at: -20°C

### Summary

Product Description	Goat Polyclonal antibody recognizes FAIM1
Tested Reactivity	Hu
Predict Reactivity	Ms, Rat, Dog
Tested Application	IHC-P, WB
Specificity	This antibody is expected to recognise all reported isoforms (NP_001028202.1; NP_001028203.1; NP_001028204.1; NP_060617.1).
Host	Goat
Clonality	Polyclonal
Isotype	IgG
Target Name	FAIM1
Species	Human
Immunogen	C-KKYMEDRSKTTN
Conjugation	Un-conjugated
Alternate Names	FAIM1; Fas apoptotic inhibitory molecule 1

### Application Instructions

Application table	Application	Dilution
	IHC-P	2 - 3 µg/ml
	WB	0.5 - 1 µg/ml
Application Note	IHC-P: Antigen Retrieval: Steam tissue section in Citrate buffer (pH 6.0). WB: Recommend incubate at RT for 1h. * The dilutions indicate recommended starting dilutions and the optimal dilutions or concentrations should be determined by the scientist.	

### Properties

Form	Liquid
Purification	Purified from goat serum by antigen affinity chromatography.
Buffer	Tris saline (pH 7.3), 0.02% Sodium azide and 0.5% BSA.
Preservative	0.02% Sodium azide
Stabilizer	0.5% BSA
Concentration	0.5 mg/ml
Storage instruction	For continuous use, store undiluted antibody at 2-8°C for up to a week. For long-term storage, aliquot and store at -20°C or below. Storage in frost free freezers is not recommended. Avoid repeated

freeze/thaw cycles. Suggest spin the vial prior to opening. The antibody solution should be gently mixed before use.

Note

For laboratory research only, not for drug, diagnostic or other use.

## Bioinformation

Database links

[GeneID: 55179 Human](#)

[Swiss-port # Q9NVQ4 Human](#)

Background

The protein encoded by this gene protects against death receptor-triggered apoptosis and regulates B-cell signaling and differentiation. Several transcript variants encoding different isoforms have been found for this gene. [provided by RefSeq, Jul 2011]

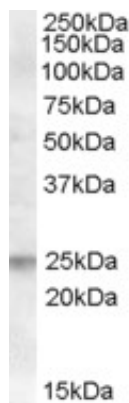
Research Area

Cell Biology and Cellular Response antibody; Cell Death antibody

Calculated Mw

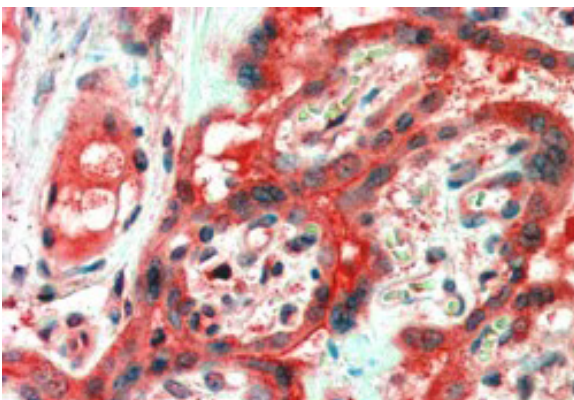
20 kDa

## Images



ARG64395 anti-FAIM1 antibody WB image

Western Blot: Human Lymph Node lysate (35 µg protein in RIPA buffer) stained with ARG64395 anti-FAIM1 antibody at 0.5 µg/ml dilution.



ARG64395 anti-FAIM1 antibody IHC-P image

Immunohistochemistry: paraffin embedded Human Placenta. (Steamed antigen retrieval with citrate buffer pH 6) stained with ARG64395 anti-FAIM1 antibody at 2.5 µg/ml dilution followed by AP-staining.