

## ARG64407 anti-MEPCE antibody

Package: 100 µg  
Store at: -20°C

### Summary

Product Description	Goat Polyclonal antibody recognizes MEPCE
Tested Reactivity	Hu, Rat
Predict Reactivity	Ms
Tested Application	IHC-P, WB
Host	Goat
Clonality	Polyclonal
Isotype	IgG
Target Name	MEPCE
Species	Human
Immunogen	KQQRKFQYGNKYK
Conjugation	Un-conjugated
Alternate Names	Bin3 homolog; MePCE; BCDIN3; EC 2.1.1.-; 7SK snRNA methylphosphate capping enzyme; Bicoid-interacting protein 3 homolog

### Application Instructions

Application table	Application	Dilution
	IHC-P	5 - 10 µg/ml
	WB	1 - 3 µg/ml
Application Note	IHC-P: Antigen Retrieval: Steam tissue section in Citrate buffer (pH 6.0). WB: Recommend incubate at RT for 1h. * The dilutions indicate recommended starting dilutions and the optimal dilutions or concentrations should be determined by the scientist.	

### Properties

Form	Liquid
Purification	Purified from goat serum by antigen affinity chromatography.
Buffer	Tris saline (pH 7.3), 0.02% Sodium azide and 0.5% BSA.
Preservative	0.02% Sodium azide
Stabilizer	0.5% BSA
Concentration	0.5 mg/ml
Storage instruction	For continuous use, store undiluted antibody at 2-8°C for up to a week. For long-term storage, aliquot and store at -20°C or below. Storage in frost free freezers is not recommended. Avoid repeated freeze/thaw cycles. Suggest spin the vial prior to opening. The antibody solution should be gently mixed

before use.

#### Note

For laboratory research only, not for drug, diagnostic or other use.

## Bioinformation

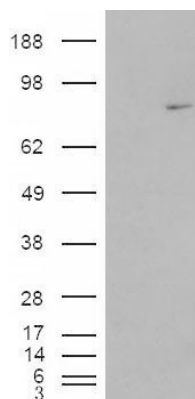
Database links	<a href="#">GeneID: 56257 Human</a> <a href="#">Swiss-port # Q7L2J0 Human</a>
Gene Symbol	MEPCE
Gene Full Name	methylphosphate capping enzyme
Function	S-adenosyl-L-methionine-dependent methyltransferase that adds a methylphosphate cap at the 5'-end of 7SK snRNA, leading to stabilize it. [UniProt]
Research Area	Gene Regulation antibody
Calculated Mw	74 kDa

## Images



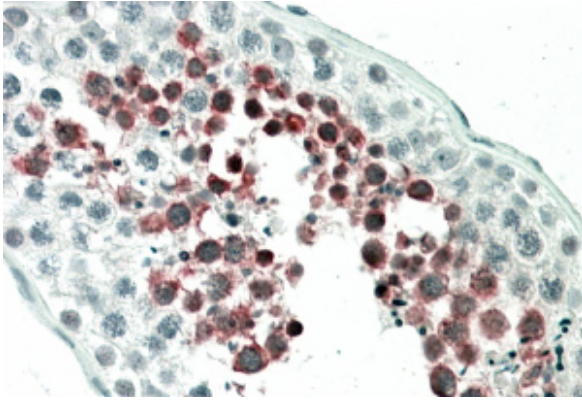
ARG64407 anti-MEPCE antibody WB image

Western Blot: Rat Testis lysate (35 µg protein in RIPA buffer) stained with ARG64407 anti-MEPCE antibody at 1 µg/ml dilution.



ARG64407 anti-MEPCE antibody WB image

Western Blot: 1). Mock transfection; 2) MEPCE (RC200948) expressing plasmid transfected HEK293 cell lysate stained with ARG64407 anti-MEPCE antibody



ARG64407 anti-MEPCE antibody IHC-P image

Immunohistochemistry: paraffin embedded Human Testis. (Steamed antigen retrieval with citrate buffer pH 6) stained with ARG64407 anti-MEPCE antibody at 5 µg/ml dilution followed by AP-staining.