

## ARG64461 anti-ATP13A1 antibody

Package: 100 µg  
Store at: -20°C

### Summary

Product Description	Goat Polyclonal antibody recognizes ATP13A1
Tested Reactivity	Hu
Predict Reactivity	Ms, Rat, Dog
Tested Application	IHC-P, WB
Host	Goat
Clonality	Polyclonal
Isotype	IgG
Target Name	ATP13A1
Species	Human
Immunogen	C-REAQARSPEKQEQ
Conjugation	Un-conjugated
Alternate Names	Manganese-transporting ATPase 13A1; CGI-152; ATP13A; EC 3.6.3.-

### Application Instructions

Application table	Application	Dilution
	IHC-P	5 µg/ml
	WB	0.3 - 1 µg/ml
Application Note	WB: Recommend incubate at RT for 1h. IHC-P: Antigen Retrieval: Steam tissue section in Citrate buffer (pH 6.0). * The dilutions indicate recommended starting dilutions and the optimal dilutions or concentrations should be determined by the scientist.	

### Properties

Form	Liquid
Purification	Purified from goat serum by antigen affinity chromatography.
Buffer	Tris saline (pH 7.3), 0.02% Sodium azide and 0.5% BSA.
Preservative	0.02% Sodium azide
Stabilizer	0.5% BSA
Concentration	0.5 mg/ml
Storage instruction	For continuous use, store undiluted antibody at 2-8°C for up to a week. For long-term storage, aliquot and store at -20°C or below. Storage in frost free freezers is not recommended. Avoid repeated freeze/thaw cycles. Suggest spin the vial prior to opening. The antibody solution should be gently mixed before use.

## Note

For laboratory research only, not for drug, diagnostic or other use.

## Bioinformation

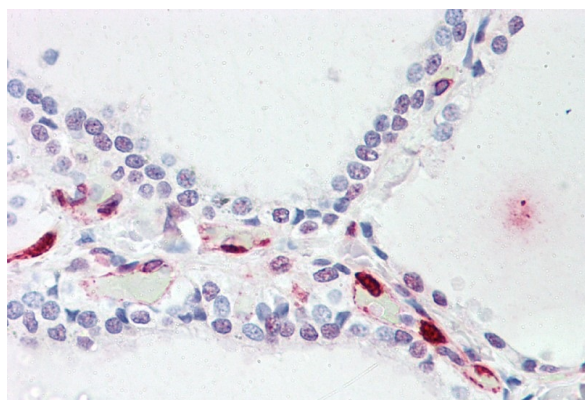
Database links	<a href="#">GeneID: 57130 Human</a> <a href="#">Swiss-port # Q9HD20 Human</a>
Gene Symbol	ATP13A1
Gene Full Name	ATPase type 13A1
Function	Mediates manganese transport into the endoplasmic reticulum. The ATPase activity is required for cellular manganese homeostasis. [UniProt]
Research Area	Metabolism antibody; Signaling Transduction antibody
Calculated Mw	133 kDa

## Images



ARG64461 anti-ATP13A1 antibody WB image

Western Blot: human kidney lysate (35 µg protein in RIPA buffer) stained with ARG64461 anti-ATP13A1 antibody at 0.3 µg/ml dilution.



ARG64461 anti-ATP13A1 antibody IHC-P image

Immunohistochemistry: Paraffin-embedded Human thyroid tissue. Antigen Retrieval: Steam tissue section in Citrate buffer (pH 6.0). The tissue section was stained with ARG64461 anti-ATP13A1 antibody at 5 µg/ml dilution followed by AP-staining.