

ARG64554 anti-GCC2 / GCC185 antibody

Package: 100 µg
Store at: -20°C

Summary

Product Description	Goat Polyclonal antibody recognizes GCC2 / GCC185
Tested Reactivity	Hu
Predict Reactivity	Rat
Tested Application	IHC-P
Specificity	This antibody is expected to recognise both reported isoforms.
Host	Goat
Clonality	Polyclonal
Isotype	IgG
Target Name	GCC2 / GCC185
Species	Human
Immunogen	C-QKLTNKNKIED
Conjugation	Un-conjugated
Alternate Names	185 kDa Golgi coiled-coil protein; Renal carcinoma antigen NY-REN-53; REN53; Ran-binding protein 2-like 4; RANBP2L4; GRIP and coiled-coil domain-containing protein 2; CLL-associated antigen KW-11; RanBP2L4; CTCL tumor antigen se1-1; GCC185

Application Instructions

Application table	<table> <tr> <th>Application</th><th>Dilution</th></tr> <tr> <td>IHC-P</td><td>3 - 5 µg/ml</td></tr> </table>	Application	Dilution	IHC-P	3 - 5 µg/ml
Application	Dilution				
IHC-P	3 - 5 µg/ml				
Application Note	<p>IHC-P: Antigen Retrieval: Steam tissue section in Citrate buffer (pH 6.0).</p> <p>* The dilutions indicate recommended starting dilutions and the optimal dilutions or concentrations should be determined by the scientist.</p>				

Properties

Form	Liquid
Purification	Purified from goat serum by antigen affinity chromatography.
Buffer	Tris saline (pH 7.3), 0.02% Sodium azide and 0.5% BSA.
Preservative	0.02% Sodium azide
Stabilizer	0.5% BSA
Concentration	0.5 mg/ml
Storage instruction	For continuous use, store undiluted antibody at 2-8°C for up to a week. For long-term storage, aliquot and store at -20°C or below. Storage in frost free freezers is not recommended. Avoid repeated freeze/thaw cycles. Suggest spin the vial prior to opening. The antibody solution should be gently mixed

before use.

Note

For laboratory research only, not for drug, diagnostic or other use.

Bioinformation

Database links

[GeneID: 9648 Human](#)

[Swiss-port # Q8IWJ2 Human](#)

Background

The protein encoded by this gene is a peripheral membrane protein localized to the trans-Golgi network. It is sensitive to brefeldin A. This encoded protein contains a GRIP domain which is thought to be used in targeting. Alternative splicing results in multiple transcript variants. [provided by RefSeq, Jul 2009]

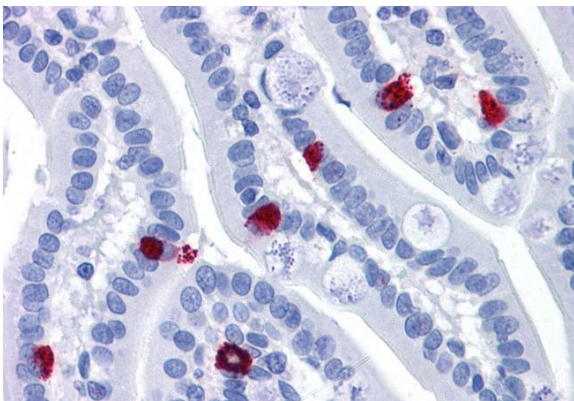
Research Area

Signaling Transduction antibody

Calculated Mw

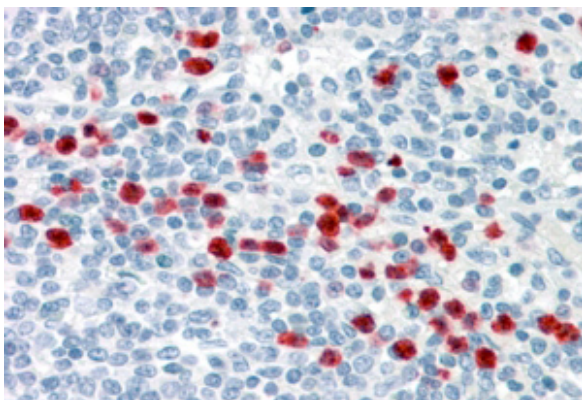
196 kDa

Images



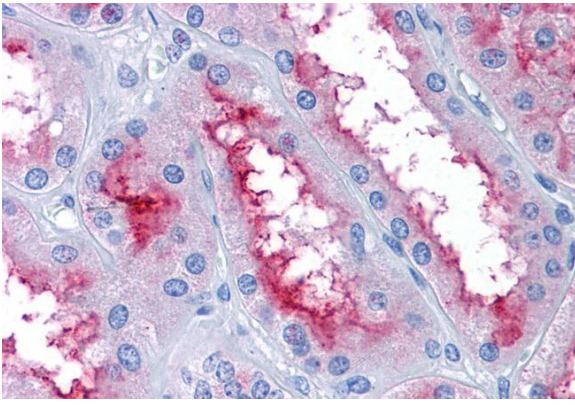
ARG64554 anti-GCC2 / GCC185 antibody IHC-P image

Immunohistochemistry: Paraffin-embedded Human small intestine tissue. Antigen Retrieval: Steam tissue section in Citrate buffer (pH 6.0). The tissue section was stained with ARG64554 anti-GCC2 / GCC185 antibody at 3.75 µg/ml dilution followed by AP-staining.



ARG64554 anti-GCC2 / GCC185 antibody IHC-P image

Immunohistochemistry: paraffin embedded Human Spleen. (Steamed antigen retrieval with citrate buffer pH 6) stained with ARG64554 anti-GCC2 / GCC185 antibody at 3.8 µg/ml dilution followed by AP-staining.



ARG64554 anti-GCC2 / GCC185 antibody IHC-P image

Immunohistochemistry: Paraffin-embedded Human kidney tissue.
Antigen Retrieval: Steam tissue section in Citrate buffer (pH 6.0). The tissue section was stained with ARG64554 anti-GCC2 / GCC185 antibody at 3.75 µg/ml dilution followed by AP-staining.