

ARG64584 anti-OX1R and OX2R antibody

Package: 100 µg
Store at: -20°C

Summary

Product Description	Goat Polyclonal antibody recognizes OX1R and OX2R
Tested Reactivity	Hu, Ms, Rat
Predict Reactivity	Cow, Dog, Pig
Tested Application	WB
Specificity	This antibody is expected to recognise both the human proteins OX1R and OX2R.
Host	Goat
Clonality	Polyclonal
Isotype	IgG
Target Name	OX1R and OX2R
Species	Human
Immunogen	C-YNFLSGKFREQFK
Conjugation	Un-conjugated
Alternate Names	Ox1-R; Ox1R; Orexin receptor type 1; OX1R; Hypocretin receptor type 1; Ox-1-R

Application Instructions

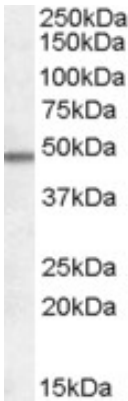
Application table	Application	Dilution
	WB	0.3 - 1 µg/ml
Application Note	WB: Recommend incubate at RT for 1h. * The dilutions indicate recommended starting dilutions and the optimal dilutions or concentrations should be determined by the scientist.	

Properties

Form	Liquid
Purification	Purified from goat serum by antigen affinity chromatography.
Buffer	Tris saline (pH 7.3), 0.02% Sodium azide and 0.5% BSA.
Preservative	0.02% Sodium azide
Stabilizer	0.5% BSA
Concentration	0.5 mg/ml
Storage instruction	For continuous use, store undiluted antibody at 2-8°C for up to a week. For long-term storage, aliquot and store at -20°C or below. Storage in frost free freezers is not recommended. Avoid repeated freeze/thaw cycles. Suggest spin the vial prior to opening. The antibody solution should be gently mixed before use.

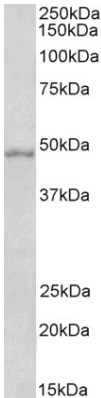
Note	For laboratory research only, not for drug, diagnostic or other use.
Bioinformation	
Gene Symbol	HCRT1
Gene Full Name	hypocretin (orexin) receptor 1
Background	The protein encoded by this gene is a G-protein coupled receptor involved in the regulation of feeding behavior. The encoded protein selectively binds the hypothalamic neuropeptide orexin A. A related gene (HCRT2) encodes a G-protein coupled receptor that binds orexin A and orexin B. [provided by RefSeq, Jan 2009]
Function	Moderately selective excitatory receptor for orexin-A and, with a lower affinity, for orexin-B neuropeptide. Seems to be exclusively coupled to the G(q) subclass of heteromeric G proteins, which activates the phospholipase C mediated signaling cascade (By similarity). [UniProt]
Research Area	Metabolism antibody; Neuroscience antibody; Signaling Transduction antibody
Calculated Mw	48 kDa

Images



ARG64584 anti-OX1R and OX2R antibody WB image

Western Blot: Frontal Cortex lysate (35 µg protein in RIPA buffer) stained with ARG64584 anti-OX1R and OX2R antibody at 0.5 µg/ml dilution.



ARG64584 anti-OX1R and OX2R antibody WB image

Western blot: 35 µg of Mouse brain lysate (in RIPA buffer) stained with ARG64584 anti-OX1R and OX2R antibody at 1 µg/ml dilution and incubated at RT for 1 hour.