

ARG64648 anti-BIN1 antibody

Package: 100 µg
Store at: -20°C

Summary

Product Description	Goat Polyclonal antibody recognizes BIN1
Tested Reactivity	Hu
Predict Reactivity	Ms, Rat, Cow, Dog, Pig
Tested Application	WB
Specificity	This antibody is expected to recognise all ten reported isoforms (NP_647593.1, NP_647594.1, NP_647595.1, NP_647596.1, NP_647597.1, NP_647598.1, NP_647599.1, NP_004296.1, NP_647600.1, NP_647601.1).
Host	Goat
Clonality	Polyclonal
Isotype	IgG
Target Name	BIN1
Species	Human
Immunogen	C-SDNAPAKGNKSPS
Conjugation	Un-conjugated
Alternate Names	Amphiphysin-like protein; AMPH2; Myc box-dependent-interacting protein 1; SH3P9; Box-dependent myc-interacting protein 1; Bridging integrator 1; Amphiphysin II; AMPHL

Application Instructions

Application table	<table> <tr> <th>Application</th><th>Dilution</th></tr> <tr> <td>WB</td><td>1 - 3 µg/ml</td></tr> </table>	Application	Dilution	WB	1 - 3 µg/ml
Application	Dilution				
WB	1 - 3 µg/ml				
Application Note	<p>WB: Recommend incubate at RT for 1h.</p> <p>* The dilutions indicate recommended starting dilutions and the optimal dilutions or concentrations should be determined by the scientist.</p>				

Properties

Form	Liquid
Purification	Purified from goat serum by antigen affinity chromatography.
Buffer	Tris saline (pH 7.3), 0.02% Sodium azide and 0.5% BSA.
Preservative	0.02% Sodium azide
Stabilizer	0.5% BSA
Concentration	0.5 mg/ml
Storage instruction	For continuous use, store undiluted antibody at 2-8°C for up to a week. For long-term storage, aliquot and store at -20°C or below. Storage in frost free freezers is not recommended. Avoid repeated

freeze/thaw cycles. Suggest spin the vial prior to opening. The antibody solution should be gently mixed before use.

Note

For laboratory research only, not for drug, diagnostic or other use.

Bioinformation

Database links

[GeneID: 274 Human](#)

[Swiss-port # O00499 Human](#)

Background

This gene encodes several isoforms of a nucleocytoplasmic adaptor protein, one of which was initially identified as a MYC-interacting protein with features of a tumor suppressor. Isoforms that are expressed in the central nervous system may be involved in synaptic vesicle endocytosis and may interact with dynamin, synaptojanin, endophilin, and clathrin. Isoforms that are expressed in muscle and ubiquitously expressed isoforms localize to the cytoplasm and nucleus and activate a caspase-independent apoptotic process. Studies in mouse suggest that this gene plays an important role in cardiac muscle development. Alternate splicing of the gene results in ten transcript variants encoding different isoforms. Aberrant splice variants expressed in tumor cell lines have also been described. [provided by RefSeq, Sep 2011]

Research Area

Cancer antibody; Cell Biology and Cellular Response antibody; Gene Regulation antibody; Microbiology and Infectious Disease antibody

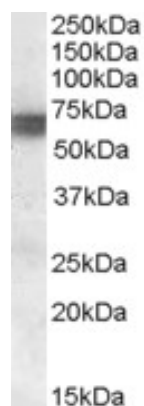
Calculated Mw

65 kDa

PTM

Phosphorylated by protein kinase C.

Images



ARG64648 anti-BIN1 antibody WB image

Western Blot: Human Skeletal Muscle lysate (35 µg protein in RIPA buffer) stained with ARG64648 anti-BIN1 antibody at 0.1 µg/ml dilution.