

**ARG64730**  
anti-IRE1a antibodyPackage: 100 µg  
Store at: -20°C

### Summary

Product Description	Goat Polyclonal antibody recognizes ERN1 / IRE1a
Tested Reactivity	Hu
Predict Reactivity	Ms, Rat, Cow, Dog, Pig
Tested Application	FACS, WB
Host	Goat
Clonality	Polyclonal
Isotype	IgG
Target Name	IRE1a
Species	Human
Immunogen	C-PNAHGKIKAMISD
Conjugation	Un-conjugated
Alternate Names	Ire1-alpha; Serine/threonine-protein kinase/endoribonuclease IRE1; IRE1a; Endoplasmic reticulum-to-nucleus signaling 1; EC 3.1.26.-; IRE1; Inositol-requiring protein 1; IRE1P; EC 2.7.11.1; hIRE1p

### Application Instructions

Application table	Application	Dilution
	FACS	10 µg/ml
	WB	0.1 - 0.3 µg/ml
Application Note	WB: Recommend incubate at RT for 1h. * The dilutions indicate recommended starting dilutions and the optimal dilutions or concentrations should be determined by the scientist.	

### Properties

Form	Liquid
Purification	Purified from goat serum by antigen affinity chromatography.
Buffer	Tris saline (pH 7.3), 0.02% Sodium azide and 0.5% BSA.
Preservative	0.02% Sodium azide
Stabilizer	0.5% BSA
Concentration	0.5 mg/ml
Storage instruction	For continuous use, store undiluted antibody at 2-8°C for up to a week. For long-term storage, aliquot and store at -20°C or below. Storage in frost free freezers is not recommended. Avoid repeated freeze/thaw cycles. Suggest spin the vial prior to opening. The antibody solution should be gently mixed before use.

Note

For laboratory research only, not for drug, diagnostic or other use.

## Bioinformation

Database links

[GeneID: 2081 Human](#)

[Swiss-port # O75460 Human](#)

Background

The protein encoded by this gene is the ER to nucleus signalling 1 protein, a human homologue of the yeast Ire1 gene product. This protein possesses intrinsic kinase activity and an endoribonuclease activity and it is important in altering gene expression as a response to endoplasmic reticulum-based stress signals. [provided by RefSeq, Jul 2008]

Research Area

Cell Biology and Cellular Response antibody; Cell Death antibody; Gene Regulation antibody; Signaling Transduction antibody

Calculated Mw

110 kDa

PTM

Autophosphorylated.

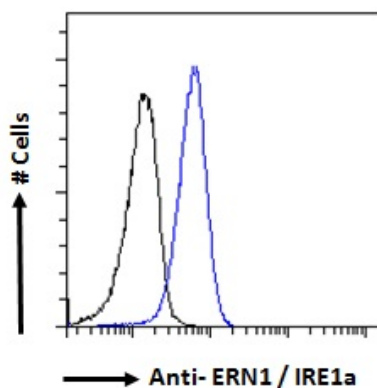
ADP-ribosylated by PARP16 upon ER stress, which increases both kinase and endonuclease activities.

## Images



ARG64730 anti-IRE1a antibody WB image

Western blot: 35 µg of Human duodenum (A) and pancreas (B) lysates (in RIPA buffer) stained with ARG64730 anti-IRE1a antibody at 0.3 µg/ml (A) and 0.1 µg/ml (B) dilutions and incubated at RT for 1 hour.



ARG64730 anti-IRE1a antibody FACS image

Flow Cytometry: Paraformaldehyde-fixed HeLa cells permeabilized with 0.5% Triton. Cells were stained with ARG64730 anti-IRE1a antibody (blue line) at 10 µg/ml dilution for 1 hour, followed by incubation with Alexa FluorR 488 labelled secondary antibody. IgG control: Unimmunized goat IgG (black line).