

## ARG64733 anti-LIPG / Endothelial lipase antibody

Package: 100 µg  
Store at: -20°C

### Summary

Product Description	Goat Polyclonal antibody recognizes LIPG / Endothelial lipase
Tested Reactivity	Hu
Tested Application	WB
Host	Goat
Clonality	Polyclonal
Isotype	IgG
Target Name	LIPG / Endothelial lipase
Species	Human
Immunogen	C-RFNLRTSKDPEHEG
Conjugation	Un-conjugated
Alternate Names	PRO719; EL; EDL; Endothelial cell-derived lipase; EC 3.1.1.3; Endothelial lipase

### Application Instructions

Application table	Application	Dilution
	WB	0.3 - 1 µg/ml
Application Note	WB: Recommend incubate at RT for 1h. * The dilutions indicate recommended starting dilutions and the optimal dilutions or concentrations should be determined by the scientist.	

### Properties

Form	Liquid
Purification	Purified from goat serum by antigen affinity chromatography.
Buffer	Tris saline (pH 7.3), 0.02% Sodium azide and 0.5% BSA.
Preservative	0.02% Sodium azide
Stabilizer	0.5% BSA
Concentration	0.5 mg/ml
Storage instruction	For continuous use, store undiluted antibody at 2-8°C for up to a week. For long-term storage, aliquot and store at -20°C or below. Storage in frost free freezers is not recommended. Avoid repeated freeze/thaw cycles. Suggest spin the vial prior to opening. The antibody solution should be gently mixed before use.
Note	For laboratory research only, not for drug, diagnostic or other use.

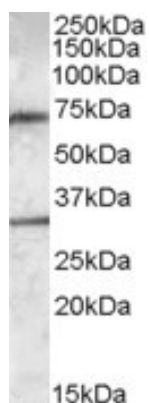
## Bioinformation

---

Database links	<a href="#">GeneID: 9388 Human</a> <a href="#">Swiss-port # Q9Y5X9 Human</a>
Background	The protein encoded by this gene has substantial phospholipase activity and may be involved in lipoprotein metabolism and vascular biology. This protein is designated a member of the TG lipase family by its sequence and characteristic lid region which provides substrate specificity for enzymes of the TG lipase family. [provided by RefSeq, Jul 2008]
Research Area	Cell Biology and Cellular Response antibody; Metabolism antibody; Signaling Transduction antibody
Calculated Mw	57 kDa

## Images

---



ARG64733 anti-LIPG / Endothelial lipase antibody WB image

Western blot: Human Liver lysate (35 µg protein in RIPA buffer) stained with ARG64733 anti-LIPG / Endothelial lipase antibody at 0.3 µg/ml dilution.