

ARG64745 anti-ApoJ / Clusterin antibody

Package: 100 µg
Store at: -20°C

Summary

Product Description	Goat Polyclonal antibody recognizes ApoJ / Clusterin
Tested Reactivity	Hu, Rat
Predict Reactivity	Ms
Tested Application	ICC/IF, WB
Host	Goat
Clonality	Polyclonal
Isotype	IgG
Target Name	ApoJ / Clusterin
Species	Mouse
Immunogen	C-EKALQEYRRKSRAE
Conjugation	Un-conjugated
Alternate Names	Clusterin; Apolipoprotein J; SGP-2; SP-40; APOJ; ApoJbeta; CLU2; CLU1; NA1/NA2; TRPM2; CLI; SGP2; Apo-J; TRPM-2; ApoJalpha; Aging-associated gene 4 protein; APO-J; Complement cytolysis inhibitor a chain; Ku70-binding protein 1; Complement cytolysis inhibitor b chain; Testosterone-repressed prostate message 2; Complement-associated protein SP-40,40; KUB1; AAG4; Complement cytolysis inhibitor

Application Instructions

Application table	Application	Dilution
	ICC/IF	10 µg/ml
	WB	0.1 - 1 µg/ml
Application Note	WB: Recommend incubate at RT for 1h. * The dilutions indicate recommended starting dilutions and the optimal dilutions or concentrations should be determined by the scientist.	

Properties

Form	Liquid
Purification	Purified from goat serum by antigen affinity chromatography.
Buffer	Tris saline (pH 7.3), 0.02% Sodium azide and 0.5% BSA.
Preservative	0.02% Sodium azide
Stabilizer	0.5% BSA
Concentration	0.5 mg/ml
Storage instruction	For continuous use, store undiluted antibody at 2-8°C for up to a week. For long-term storage, aliquot and store at -20°C or below. Storage in frost free freezers is not recommended. Avoid repeated

freeze/thaw cycles. Suggest spin the vial prior to opening. The antibody solution should be gently mixed before use.

Note

For laboratory research only, not for drug, diagnostic or other use.

Bioinformation

Database links

[GeneID: 1191 Human](#)

[GeneID: 24854 Rat](#)

[Swiss-port # P05371 Rat](#)

[Swiss-port # P10909 Human](#)

Gene Symbol

Clu

Gene Full Name

clusterin

Background

The protein encoded by this gene is a secreted chaperone that can under some stress conditions also be found in the cell cytosol. It has been suggested to be involved in several basic biological events such as cell death, tumor progression, and neurodegenerative disorders. Alternate splicing results in both coding and non-coding variants.[provided by RefSeq, May 2011]

Function

Functions as extracellular chaperone that prevents aggregation of nonnative proteins. Prevents stress-induced aggregation of blood plasma proteins. Inhibits formation of amyloid fibrils by APP, APOC2, B2M, CALCA, CSN3, SNCA and aggregation-prone LYZ variants (in vitro). Does not require ATP. Maintains partially unfolded proteins in a state appropriate for subsequent refolding by other chaperones, such as HSPA8/HSC70. Does not refold proteins by itself. Binding to cell surface receptors triggers internalization of the chaperone-client complex and subsequent lysosomal or proteasomal degradation. When secreted, protects cells against apoptosis and against cytolysis by complement. Intracellular forms interact with ubiquitin and SCF (SKP1-CUL1-F-box protein) E3 ubiquitin-protein ligase complexes and promote the ubiquitination and subsequent proteasomal degradation of target proteins. Promotes proteasomal degradation of COMMD1 and IKBKB. Modulates NF-kappa-B transcriptional activity. Promotes apoptosis when in the nucleus. Inhibits apoptosis when associated with the mitochondrial membrane by interference with BAX-dependent release of cytochrome c into the cytoplasm. Plays a role in the regulation of cell proliferation (By similarity). [UniProt]

Research Area

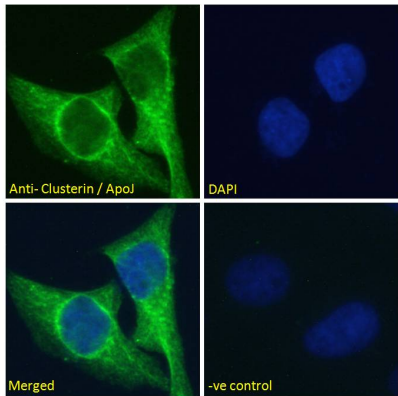
Cancer antibody; Cell Biology and Cellular Response antibody; Immune System antibody; Metabolism antibody; Signaling Transduction antibody

Calculated Mw

52 kDa

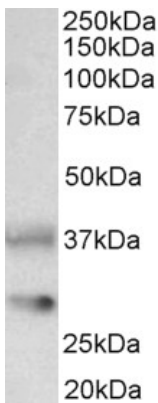
PTM

Isoform 1 is proteolytically cleaved on its way through the secretory system, probably within the Golgi lumen.
Polyubiquitinated, leading to proteasomal degradation.
Heavily N-glycosylated. About 30% of the protein mass is comprised of complex N-linked carbohydrate.



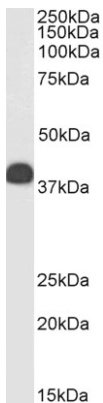
ARG64745 anti-ApoJ / Clusterin antibody ICC/IF image

Immunofluorescence: Paraformaldehyde fixed HeLa cells permeabilized with 0.15% Triton. Cells were stained with ARG64745 anti-ApoJ / Clusterin antibody (green) at 10 µg/ml dilution for 1 hour. DAPI (blue) for nuclear staining. Negative control: Unimmunized goat IgG (green) at 10 µg/ml dilution.



ARG64745 anti-ApoJ / Clusterin antibody WB image

Western blot: 35 µg of Rat brain lysate (in RIPA buffer) stained with ARG64745 anti-ApoJ / Clusterin antibody at 0.1 µg/ml dilution and incubated at RT for 1 hour.



ARG64745 anti-ApoJ / Clusterin antibody WB image

Western blot: 35 µg of Human testis lysate (in RIPA buffer) stained with ARG64745 anti-ApoJ / Clusterin antibody at 0.3 µg/ml dilution and incubated at RT for 1 hour.