

## ARG64747 anti-SEPT2 antibody

Package: 100 µg  
Store at: -20°C

### Summary

Product Description	Goat Polyclonal antibody recognizes SEPT2
Tested Reactivity	Hu
Predict Reactivity	Ms, Rat, Cow
Tested Application	IHC-P, WB
Specificity	Reported variants represent identical protein: NP_001008492.1, NP_006146.1, NP_004395.1, NP_001008491.1.
Host	Goat
Clonality	Polyclonal
Isotype	IgG
Target Name	SEPT2
Species	Human
Immunogen	SKQQPTQFINPET-C
Conjugation	Un-conjugated
Alternate Names	Pnutl3; NEDD-5; Septin-2; NEDD5; hNedd5; Neural precursor cell expressed developmentally down-regulated protein 5; DIFF6

### Application Instructions

Application table	Application	Dilution
	IHC-P	2.5 µg/ml
	WB	0.05 - 0.2 µg/ml
Application Note	WB: Recommend incubate at RT for 1h. IHC-P: Antigen Retrieval: Steam tissue section in Citrate buffer (pH 6.0). * The dilutions indicate recommended starting dilutions and the optimal dilutions or concentrations should be determined by the scientist.	

### Properties

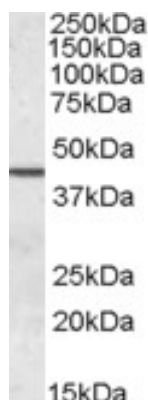
Form	Liquid
Purification	Purified from goat serum by antigen affinity chromatography.
Buffer	Tris saline (pH 7.3), 0.02% Sodium azide and 0.5% BSA.
Preservative	0.02% Sodium azide
Stabilizer	0.5% BSA
Concentration	0.5 mg/ml

Storage instruction	For continuous use, store undiluted antibody at 2-8°C for up to a week. For long-term storage, aliquot and store at -20°C or below. Storage in frost free freezers is not recommended. Avoid repeated freeze/thaw cycles. Suggest spin the vial prior to opening. The antibody solution should be gently mixed before use.
Note	For laboratory research only, not for drug, diagnostic or other use.

## Bioinformation

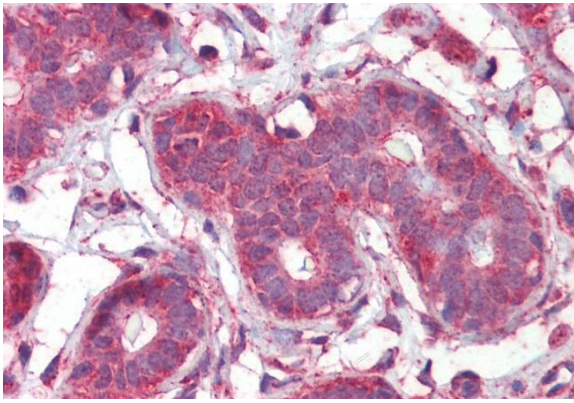
Database links	<a href="#">GeneID: 4735 Human</a> <a href="#">Swiss-port # Q15019 Human</a>
Gene Symbol	SEPT2
Gene Full Name	septin 2
Function	Filament-forming cytoskeletal GTPase. Required for normal organization of the actin cytoskeleton. Plays a role in the biogenesis of polarized columnar-shaped epithelium by maintaining polyglutamylated microtubules, thus facilitating efficient vesicle transport, and by impeding MAP4 binding to tubulin. Required for the progression through mitosis. Forms a scaffold at the midplane of the mitotic spindle required to maintain CENPE localization at kinetochores and consequently chromosome congression. During anaphase, may be required for chromosome segregation and spindle elongation. Plays a role in ciliogenesis and collective cell movements. In cilia, required for the integrity of the diffusion barrier at the base of the primary cilium that prevents diffusion of transmembrane proteins between the cilia and plasma membranes: probably acts by regulating the assembly of the tectonic-like complex (also named B9 complex) by localizing TMEM231 protein. May play a role in the internalization of 2 intracellular microbial pathogens, <i>Listeria monocytogenes</i> and <i>Shigella flexneri</i> . [UniProt]
Research Area	Cell Biology and Cellular Response antibody
Calculated Mw	41 kDa

## Images



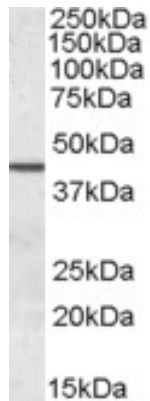
ARG64747 anti-SEPT2 antibody WB image

Western blot: 35 µg of Human Testis lysate stained with ARG64747 anti-SEPT2 antibody at 0.05 µg/ml dilution.



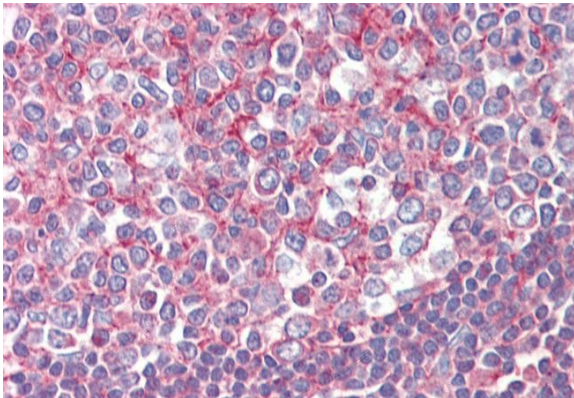
**ARG64747 anti-SEPT2 antibody IHC-P image**

Immunohistochemistry: Paraffin-embedded Human breast tissue. Antigen Retrieval: Steam tissue section in Citrate buffer (pH 6.0). The tissue section was stained with ARG64747 anti-SEPT2 antibody at 2.5 µg/ml dilution followed by AP-staining.



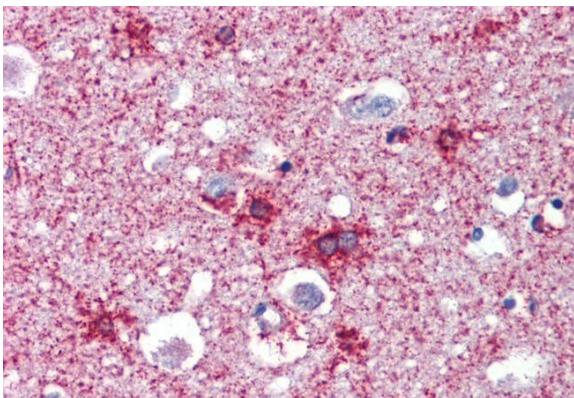
**ARG64747 anti-SEPT2 antibody WB image**

Western blot: 35 µg of Human testis lysate (in RIPA buffer) stained with ARG64747 anti-SEPT2 antibody at 0.05 µg/ml dilution and incubated at RT for 1 hour.



**ARG64747 anti-SEPT2 antibody IHC-P image**

Immunohistochemistry: Paraffin-embedded Human tonsil tissue. Antigen Retrieval: Steam tissue section in Citrate buffer (pH 6.0). The tissue section was stained with ARG64747 anti-SEPT2 antibody at 2.5 µg/ml dilution followed by AP-staining.



**ARG64747 anti-SEPT2 antibody IHC-P image**

Immunohistochemistry: Paraffin-embedded Human cortex tissue. Antigen Retrieval: Steam tissue section in Citrate buffer (pH 6.0). The tissue section was stained with ARG64747 anti-SEPT2 antibody at 2.5 µg/ml dilution followed by AP-staining.