

## ARG64765 anti-IMPDH2 antibody

Package: 100 µg  
Store at: -20°C

### Summary

Product Description	Goat Polyclonal antibody recognizes IMPDH2
Tested Reactivity	Hu
Tested Application	WB
Host	Goat
Clonality	Polyclonal
Isotype	IgG
Target Name	IMPDH2
Species	Human
Immunogen	KEEEHDCFLEEI
Conjugation	Un-conjugated
Alternate Names	IMPD2; EC 1.1.1.205; IMPDH-II; IMP dehydrogenase 2; IMPD 2; Inosine-5'-monophosphate dehydrogenase 2; IMPDH 2

### Application Instructions

Application table	Application	Dilution
	WB	1 - 3 µg/ml
Application Note	WB: Recommend incubate at RT for 1h. * The dilutions indicate recommended starting dilutions and the optimal dilutions or concentrations should be determined by the scientist.	

### Properties

Form	Liquid
Purification	Purified from goat serum by antigen affinity chromatography.
Buffer	Tris saline (pH 7.3), 0.02% Sodium azide and 0.5% BSA.
Preservative	0.02% Sodium azide
Stabilizer	0.5% BSA
Concentration	0.5 mg/ml
Storage instruction	For continuous use, store undiluted antibody at 2-8°C for up to a week. For long-term storage, aliquot and store at -20°C or below. Storage in frost free freezers is not recommended. Avoid repeated freeze/thaw cycles. Suggest spin the vial prior to opening. The antibody solution should be gently mixed before use.
Note	For laboratory research only, not for drug, diagnostic or other use.

## Bioinformation

---

### Database links

[GeneID: 3615 Human](#)

[Swiss-port # P12268 Human](#)

### Background

This gene encodes the rate-limiting enzyme in the de novo guanine nucleotide biosynthesis. It is thus involved in maintaining cellular guanine deoxy- and ribonucleotide pools needed for DNA and RNA synthesis. The encoded protein catalyzes the NAD-dependent oxidation of inosine-5'-monophosphate into xanthine-5'-monophosphate, which is then converted into guanosine-5'-monophosphate. This gene is up-regulated in some neoplasms, suggesting it may play a role in malignant transformation. [provided by RefSeq, Jul 2008]

### Research Area

Cancer antibody; Metabolism antibody; Signaling Transduction antibody

### Calculated Mw

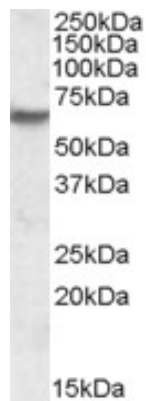
56 kDa

### PTM

The N-terminus is blocked.

## Images

---



ARG64765 anti-IMPDH2 antibody WB image

Western Blot: Human Skeletal Muscle lysate (35 µg protein in RIPA buffer) stained with ARG64765 anti-IMPDH2 antibody at 1 µg/ml dilution.