

## ARG64780 anti-MTNR1B antibody

Package: 100 µg  
Store at: -20°C

### Summary

Product Description	Goat Polyclonal antibody recognizes MTNR1B
Tested Reactivity	Hu
Tested Application	IHC-P
Host	Goat
Clonality	Polyclonal
Isotype	IgG
Target Name	MTNR1B
Species	Human
Immunogen	C-QDASKGSHA EGLQSP
Conjugation	Un-conjugated
Alternate Names	MT2; MEL-1B-R; Melatonin receptor type 1B; Mel-1B-R; FGQTL2; Mel1b receptor

### Application Instructions

Application table	Application	Dilution
	IHC-P	3 - 6 µg/ml

**Application Note** IHC-P: Antigen Retrieval: Steam tissue section in Citrate buffer (pH 6.0).  
\* The dilutions indicate recommended starting dilutions and the optimal dilutions or concentrations should be determined by the scientist.

### Properties

Form	Liquid
Purification	Purified from goat serum by antigen affinity chromatography.
Buffer	Tris saline (pH 7.3), 0.02% Sodium azide and 0.5% BSA.
Preservative	0.02% Sodium azide
Stabilizer	0.5% BSA
Concentration	0.5 mg/ml
Storage instruction	For continuous use, store undiluted antibody at 2-8°C for up to a week. For long-term storage, aliquot and store at -20°C or below. Storage in frost free freezers is not recommended. Avoid repeated freeze/thaw cycles. Suggest spin the vial prior to opening. The antibody solution should be gently mixed before use.
Note	For laboratory research only, not for drug, diagnostic or other use.

## Bioinformation

---

Database links

[GeneID: 4544 Human](#)

[Swiss-port # P49286 Human](#)

Background

This gene encodes one of two high affinity forms of a receptor for melatonin, the primary hormone secreted by the pineal gland. This gene product is an integral membrane protein that is a G-protein coupled, 7-transmembrane receptor. It is found primarily in the retina and brain although this detection requires RT-PCR. It is thought to participate in light-dependent functions in the retina and may be involved in the neurobiological effects of melatonin. [provided by RefSeq, Jul 2008]

Research Area

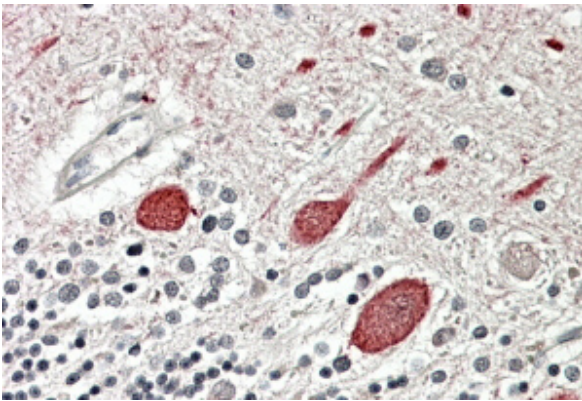
Neuroscience antibody

Calculated Mw

40 kDa

## Images

---



ARG64780 anti-MTNR1B antibody IHC-P image

Immunohistochemistry: paraffin embedded Human Cerebellum. (Steamed antigen retrieval with citrate buffer pH 6) stained with ARG64780 anti-MTNR1B antibody at 3.8 µg/ml dilution followed by AP-staining.