

ARG64831 anti-Laforin antibody

Package: 100 µg
Store at: -20°C

Summary

Product Description	Goat Polyclonal antibody recognizes Laforin
Tested Reactivity	Hu
Predict Reactivity	Ms, Rat, Cow, Dog
Tested Application	IHC-P, WB
Specificity	This antibody is expected to recognize isoform a (NP_005661.1) only.
Host	Goat
Clonality	Polyclonal
Isotype	IgG
Target Name	Laforin
Species	Human
Immunogen	C-EATGHTNEMKHTTD
Conjugation	Un-conjugated
Alternate Names	Laforin; EPM2; Glucan phosphatase; EC 3.1.3.16; EC 3.1.3.-; Lafora PTPase; LAFPTase; EC 3.1.3.48; MELF

Application Instructions

Application table	Application	Dilution
	IHC-P	2.5 µg/ml
	WB	0.1 - 0.3 µg/ml
Application Note	WB: Recommend incubate at RT for 1h. IHC-P: Antigen Retrieval: Steam tissue section in Citrate buffer (pH 6.0). * The dilutions indicate recommended starting dilutions and the optimal dilutions or concentrations should be determined by the scientist.	

Properties

Form	Liquid
Purification	Purified from goat serum by antigen affinity chromatography.
Buffer	Tris saline (pH 7.3), 0.02% Sodium azide and 0.5% BSA.
Preservative	0.02% Sodium azide
Stabilizer	0.5% BSA
Concentration	0.5 mg/ml
Storage instruction	For continuous use, store undiluted antibody at 2-8°C for up to a week. For long-term storage, aliquot and store at -20°C or below. Storage in frost free freezers is not recommended. Avoid repeated

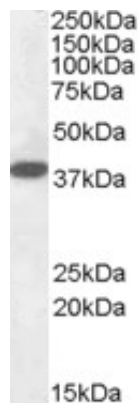
freeze/thaw cycles. Suggest spin the vial prior to opening. The antibody solution should be gently mixed before use.

Note For laboratory research only, not for drug, diagnostic or other use.

Bioinformation

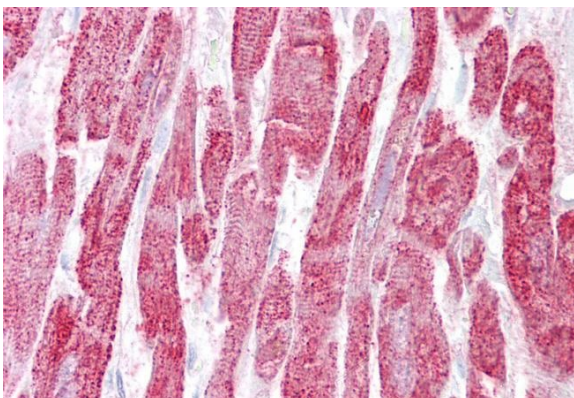
Database links	GeneID: 7957 Human Swiss-port # O95278 Human
Background	This gene encodes a dual-specificity phosphatase that associates with polyribosomes. The encoded protein may be involved in the regulation of glycogen metabolism. Mutations in this gene have been associated with myoclonic epilepsy of Lafora. Alternative splicing results in multiple transcript variants. [provided by RefSeq, Jul 2008]
Research Area	Metabolism antibody; Signaling Transduction antibody
Calculated Mw	37 kDa
PTM	Polyubiquitinated by NHLRC1/malin. Phosphorylation on Ser-25 by AMPK affects the phosphatase activity of the enzyme and its ability to homodimerize and interact with NHLRC1, PPP1R3C or PRKAA2.

Images



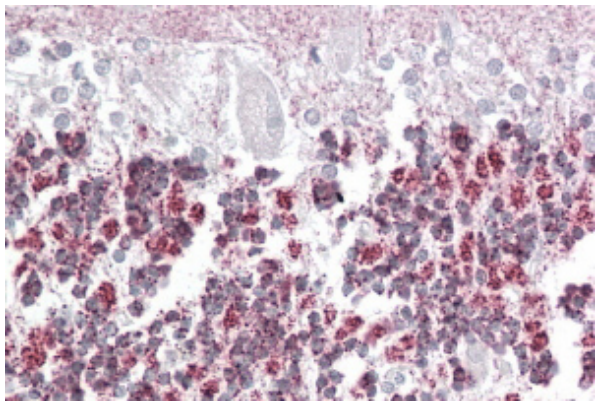
ARG64831 anti-Laforin antibody WB image

Western Blot: Human Cerebellum lysate (35 µg protein in RIPA buffer) stained with ARG64831 anti-Laforin (isoform a) antibody at 0.1 µg/ml dilution.



ARG64831 anti-Laforin antibody IHC-P image

Immunohistochemistry: Paraffin-embedded Human heart tissue. Antigen Retrieval: Steam tissue section in Citrate buffer (pH 6.0). The tissue section was stained with ARG64831 anti-Laforin antibody at 2.5 µg/ml dilution followed by AP-staining.



ARG64831 anti-Laforin antibody IHC-P image

Immunohistochemistry: paraffin embedded Human Cerebellum. (Steamed antigen retrieval with citrate buffer pH 6) stained with ARG64831 anti-Laforin (isoform a) antibody at 3.8 µg/ml dilution followed by AP-staining.