

ARG64836 anti-SLC47A1 antibody

Package: 100 µg
Store at: -20°C

Summary

Product Description	Goat Polyclonal antibody recognizes SLC47A1
Tested Reactivity	Hu
Tested Application	ICC/IF, WB
Host	Goat
Clonality	Polyclonal
Isotype	IgG
Target Name	SLC47A1
Species	Human
Immunogen	C-PEHPQDGAKLSRKQ
Conjugation	Un-conjugated
Alternate Names	Multidrug and toxin extrusion protein 1; MATE1; Solute carrier family 47 member 1; hMATE-1; MATE-1

Application Instructions

Application table	Application	Dilution
	ICC/IF	10 µg/ml
	WB	0.1 - 0.3 µg/ml
Application Note	WB: Recommend incubate at RT for 1h. * The dilutions indicate recommended starting dilutions and the optimal dilutions or concentrations should be determined by the scientist.	
Positive Control	Human liver	
Observed Size	~ 62 kDa	

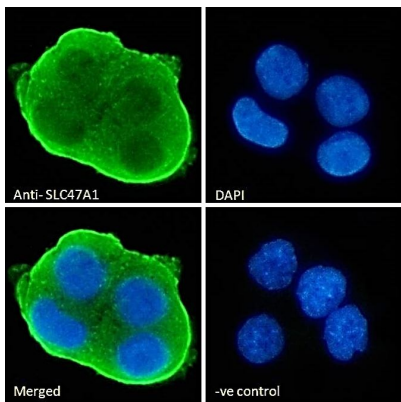
Properties

Form	Liquid
Purification	Purified from goat serum by antigen affinity chromatography.
Buffer	Tris saline (pH 7.3), 0.02% Sodium azide and 0.5% BSA.
Preservative	0.02% Sodium azide
Stabilizer	0.5% BSA
Concentration	0.5 mg/ml
Storage instruction	For continuous use, store undiluted antibody at 2-8°C for up to a week. For long-term storage, aliquot and store at -20°C or below. Storage in frost free freezers is not recommended. Avoid repeated freeze/thaw cycles. Suggest spin the vial prior to opening. The antibody solution should be gently mixed before use.

Bioinformation

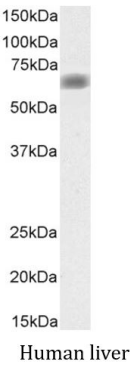
Database links	GeneID: 55244 Human Swiss-port # Q96FL8 Human
Background	This gene is located within the Smith-Magenis syndrome region on chromosome 17. It encodes a protein of unknown function. [provided by RefSeq, Jul 2008]
Research Area	Metabolism antibody; Signaling Transduction antibody
Calculated Mw	62 kDa

Images



ARG64836 anti-SLC47A1 antibody ICC/IF image

Immunofluorescence: Paraformaldehyde-fixed HepG2 cells permeabilized with 0.15% Triton. Cells were stained with ARG64836 anti-SLC47A1 antibody (green) at 10 µg/ml dilution for 1 hour. DAPI (blue) for nuclear staining. Negative control: Unimmunized goat IgG (green) at 10 µg/ml dilution.



ARG64836 anti-SLC47A1 antibody WB image

Western blot: 35 µg of Human liver lysate (in RIPA buffer) stained with ARG64836 anti-SLC47A1 antibody at 0.1 µg/ml dilution and incubated at RT for 1 hour.