

ARG64858 anti-Synaptotagmin 1 antibody

Package: 100 µg
Store at: -20°C

Summary

Product Description	Goat Polyclonal antibody recognizes Synaptotagmin 1
Tested Reactivity	Hu
Predict Reactivity	Ms, Rat, Cow, Dog
Tested Application	IHC-P, WB
Specificity	Reported isoforms NP_005630.1, NP_001129277.1 and NP_001129278.1 represent identical protein.
Host	Goat
Clonality	Polyclonal
Isotype	IgG
Target Name	Synaptotagmin 1
Species	Human
Immunogen	C-RDLQSAEKEEQEK
Conjugation	Un-conjugated
Alternate Names	P65; Synaptotagmin I; SytI; SVP65; SYT; p65; Synaptotagmin-1

Application Instructions

Application table	Application	Dilution
	IHC-P	4 - 6 µg/ml
	WB	0.3 - 1 µg/ml
Application Note	WB: Recommend incubate at RT for 1h. IHC-P: Antigen Retrieval: Steam tissue section in Citrate buffer (pH 6.0). * The dilutions indicate recommended starting dilutions and the optimal dilutions or concentrations should be determined by the scientist.	

Properties

Form	Liquid
Purification	Purified from goat serum by antigen affinity chromatography.
Buffer	Tris saline (pH 7.3), 0.02% Sodium azide and 0.5% BSA.
Preservative	0.02% Sodium azide
Stabilizer	0.5% BSA
Concentration	0.5 mg/ml
Storage instruction	For continuous use, store undiluted antibody at 2-8°C for up to a week. For long-term storage, aliquot and store at -20°C or below. Storage in frost free freezers is not recommended. Avoid repeated freeze/thaw cycles. Suggest spin the vial prior to opening. The antibody solution should be gently mixed

before use.

Note

For laboratory research only, not for drug, diagnostic or other use.

Bioinformation

Database links

[GeneID: 6857 Human](#)

[Swiss-port # P21579 Human](#)

Background

The synaptotagmins are integral membrane proteins of synaptic vesicles thought to serve as Ca(2+) sensors in the process of vesicular trafficking and exocytosis. Calcium binding to synaptotagmin-1 participates in triggering neurotransmitter release at the synapse (Fernandez-Chacon et al., 2001 [PubMed 11242035]).[supplied by OMIM, Jul 2010]

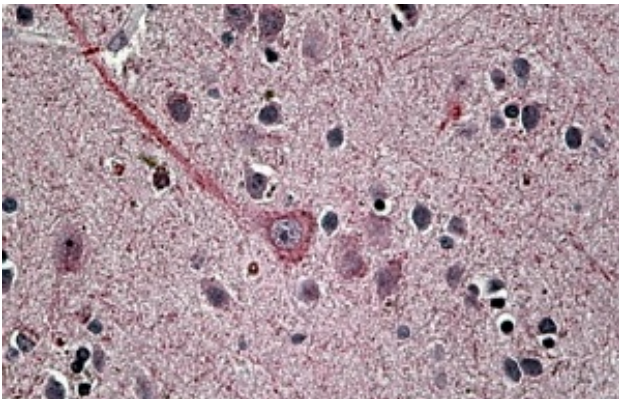
Research Area

Cancer antibody; Metabolism antibody; Neuroscience antibody; Signaling Transduction antibody

Calculated Mw

48 kDa

Images



ARG64858 anti-Synaptotagmin 1 antibody IHC-P image

Immunohistochemistry: Paraffin-embedded Human brain tissue. Antigen Retrieval: Steam tissue section in Citrate buffer (pH 6.0). The tissue section was stained with ARG64858 anti-Synaptotagmin 1 antibody at 3.8 µg/ml dilution followed by AP-staining.



ARG64858 anti-Synaptotagmin 1 antibody WB image

Western blot: 35 µg of Human hippocampus lysate (in RIPA buffer) stained with ARG64858 anti-Synaptotagmin 1 antibody at 1 µg/ml dilution and incubated at RT for 1 hour.