

## ARG64899 anti-GRN / Granulin antibody

Package: 100 µg  
Store at: -20°C

### Summary

Product Description	Goat Polyclonal antibody recognizes GRN / Granulin
Tested Reactivity	Hu
Tested Application	ICC/IF, WB
Host	Goat
Clonality	Polyclonal
Isotype	IgG
Target Name	GRN / Granulin
Species	Human
Immunogen	QSKCLSKENATTD
Conjugation	Un-conjugated
Alternate Names	PEPI; Glycoprotein 88; CLN11; GEP; Proepithelin; Granulin E; Granulin D; Granulins; PGRN; Glycoprotein of 88 Kda; Granulin G; Progranulin; PCDGF; Granulin B; Granulin C; Granulin A; GP88; Granulin F

### Application Instructions

Application table	Application	Dilution
	ICC/IF	10 µg/ml
	WB	2 µg/ml

**Application Note**  
WB: Recommend incubate at RT for 1h.  
\* The dilutions indicate recommended starting dilutions and the optimal dilutions or concentrations should be determined by the scientist.

### Properties

Form	Liquid
Purification	Purified from goat serum by antigen affinity chromatography.
Buffer	Tris saline (pH 7.3), 0.02% Sodium azide and 0.5% BSA.
Preservative	0.02% Sodium azide
Stabilizer	0.5% BSA
Concentration	0.5 mg/ml
Storage instruction	For continuous use, store undiluted antibody at 2-8°C for up to a week. For long-term storage, aliquot and store at -20°C or below. Storage in frost free freezers is not recommended. Avoid repeated freeze/thaw cycles. Suggest spin the vial prior to opening. The antibody solution should be gently mixed before use.
Note	For laboratory research only, not for drug, diagnostic or other use.

## Bioinformation

### Database links

[GeneID: 2896 Human](#)

[Swiss-port # P28799 Human](#)

### Background

Granulins are a family of secreted, glycosylated peptides that are cleaved from a single precursor protein with 7.5 repeats of a highly conserved 12-cysteine granulin/epithelin motif. The 88 kDa precursor protein, progranulin, is also called proepithelin and PC cell-derived growth factor. Cleavage of the signal peptide produces mature granulin which can be further cleaved into a variety of active, 6 kDa peptides. These smaller cleavage products are named granulin A, granulin B, granulin C, etc. Epithelins 1 and 2 are synonymous with granulins A and B, respectively. Both the peptides and intact granulin protein regulate cell growth. However, different members of the granulin protein family may act as inhibitors, stimulators, or have dual actions on cell growth. Granulin family members are important in normal development, wound healing, and tumorigenesis. [provided by RefSeq, Jul 2008]

### Research Area

Cancer antibody; Immune System antibody; Neuroscience antibody

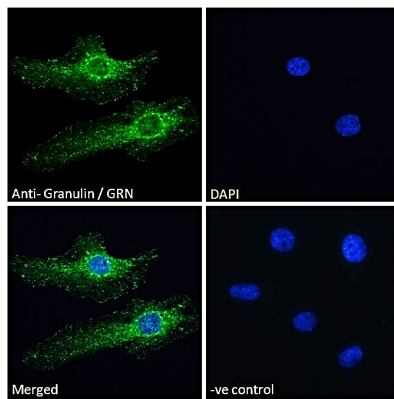
### Calculated Mw

64 kDa

### PTM

Granulins are disulfide bridged.

## Images



ARG64899 anti-GRN / Granulin antibody ICC/IF image

Immunofluorescence: Paraformaldehyde fixed HeLa cells permeabilized with 0.15% Triton. Cells were stained with ARG64899 anti-GRN / Granulin antibody (green) at 10 µg/ml dilution for 1 hour. DAPI (blue) for nuclear staining. Negative control: Unimmunized goat IgG (green) at 10 µg/ml dilution.