

ARG64913 anti-MTNR1A antibody

Package: 100 µg
Store at: -20°C

Summary

Product Description	Goat Polyclonal antibody recognizes MTNR1A
Tested Reactivity	Rat
Predict Reactivity	Hu, Ms, Cow, Dog
Tested Application	WB
Host	Goat
Clonality	Polyclonal
Isotype	IgG
Target Name	MTNR1A
Species	Human
Immunogen	C-SLKYDKLYSSKNS
Conjugation	Un-conjugated
Alternate Names	MEL-1A-R; Mel-1A-R; MT1; Melatonin receptor type 1A; Mel1a receptor

Application Instructions

Application table	Application	Dilution
	WB	1 - 3 µg/ml

Application Note
WB: Recommend incubate at RT for 1h.
* The dilutions indicate recommended starting dilutions and the optimal dilutions or concentrations should be determined by the scientist.

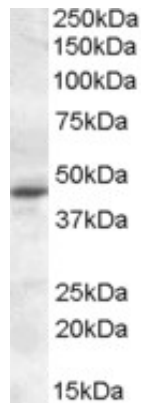
Properties

Form	Liquid
Purification	Purified from goat serum by antigen affinity chromatography.
Buffer	Tris saline (pH 7.3), 0.02% Sodium azide and 0.5% BSA.
Preservative	0.02% Sodium azide
Stabilizer	0.5% BSA
Concentration	0.5 mg/ml
Storage instruction	For continuous use, store undiluted antibody at 2-8°C for up to a week. For long-term storage, aliquot and store at -20°C or below. Storage in frost free freezers is not recommended. Avoid repeated freeze/thaw cycles. Suggest spin the vial prior to opening. The antibody solution should be gently mixed before use.
Note	For laboratory research only, not for drug, diagnostic or other use.

Bioinformation

Background	This gene encodes one of two high affinity forms of a receptor for melatonin, the primary hormone secreted by the pineal gland. This receptor is a G-protein coupled, 7-transmembrane receptor that is responsible for melatonin effects on mammalian circadian rhythm and reproductive alterations affected by day length. The receptor is an integral membrane protein that is readily detectable and localized to two specific regions of the brain. The hypothalamic suprachiasmatic nucleus appears to be involved in circadian rhythm while the hypophysial pars tuberalis may be responsible for the reproductive effects of melatonin. [provided by RefSeq, Jul 2008]
Research Area	Metabolism antibody; Neuroscience antibody
Calculated Mw	39 kDa

Images



ARG64913 anti-MTNR1A antibody WB image

Western Blot: KELLY lysate (35 μ g protein in RIPA buffer) stained with ARG64913 anti-MTNR1A antibody at 0.3 μ g/ml dilution.