

ARG64937 anti-PP2A / PPP2R4 antibody

Package: 100 µg
Store at: -20°C

Summary

Product Description	Goat Polyclonal antibody recognizes PP2A / PPP2R4
Tested Reactivity	Hu, Ms, Rat
Predict Reactivity	Cow, Dog
Tested Application	IHC-P, WB
Specificity	This antibody is expected to recognize all reported isoforms (NP_821068.1; NP_066954.2; NP_821070.1). Reported variants NP_066954.2 and NP_821067.1 represent identical protein.
Host	Goat
Clonality	Polyclonal
Isotype	IgG
Target Name	PP2A / PPP2R4
Species	Human
Immunogen	C-GSLLPIHPVTSG
Conjugation	Un-conjugated
Alternate Names	Serine/threonine-protein phosphatase 2A activator; Serine/threonine-protein phosphatase 2A regulatory subunit 4; PTPA; EC 5.2.1.8; PP2A; Phosphotyrosyl phosphatase activator; PR53; PP2A, subunit B', PR53 isoform; Serine/threonine-protein phosphatase 2A regulatory subunit B'

Application Instructions

Application table	Application	Dilution
	IHC-P	3 - 5 µg/ml
	WB	0.5 - 2 µg/ml
Application Note	WB: Recommend incubate at RT for 1h. IHC-P: Antigen Retrieval: Steam tissue section in Citrate buffer (pH 6.0). * The dilutions indicate recommended starting dilutions and the optimal dilutions or concentrations should be determined by the scientist.	

Properties

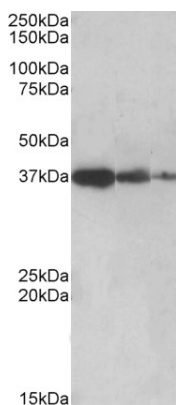
Form	Liquid
Purification	Purified from goat serum by antigen affinity chromatography.
Buffer	Tris saline (pH 7.3), 0.02% Sodium azide and 0.5% BSA.
Preservative	0.02% Sodium azide
Stabilizer	0.5% BSA
Concentration	0.5 mg/ml

Storage instruction	For continuous use, store undiluted antibody at 2-8°C for up to a week. For long-term storage, aliquot and store at -20°C or below. Storage in frost free freezers is not recommended. Avoid repeated freeze/thaw cycles. Suggest spin the vial prior to opening. The antibody solution should be gently mixed before use.
Note	For laboratory research only, not for drug, diagnostic or other use.

Bioinformation

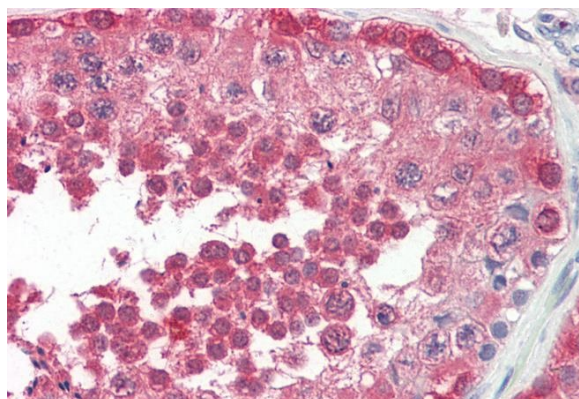
Database links	GeneID: 110854 Mouse GeneID: 5524 Human Swiss-port # P58389 Mouse Swiss-port # Q15257 Human
Background	Protein phosphatase 2A is one of the four major Ser/Thr phosphatases and is implicated in the negative control of cell growth and division. Protein phosphatase 2A holoenzymes are heterotrimeric proteins composed of a structural subunit A, a catalytic subunit C, and a regulatory subunit B. The regulatory subunit is encoded by a diverse set of genes that have been grouped into the B/PR55, B'/PR61, and B''/PR72 families. These different regulatory subunits confer distinct enzymatic specificities and intracellular localizations to the holoenzyme. The product of this gene belongs to the B' family. This gene encodes a specific phosphotyrosyl phosphatase activator of the dimeric form of protein phosphatase 2A. Alternative splicing results in multiple transcript variants encoding different isoforms. [provided by RefSeq, Jul 2008]
Research Area	Signaling Transduction antibody; PP2A alpha/beta antibody; Loading control antibody
Calculated Mw	41 kDa

Images



ARG64937 anti-PP2A / PPP2R4 antibody WB image

Western blot: Human Liver lysate (lane 1), Mouse Liver (lane 2) and Rat Liver (lane 3) (35 µg protein in RIPA buffer) stained with ARG64937 anti-PP2A / PPP2R4 antibody at 0.5 µg/ml dilution.



ARG64937 anti-PP2A / PPP2R4 antibody IHC-P image

Immunohistochemistry: Paraffin-embedded Human testis tissue. Antigen Retrieval: Steam tissue section in Citrate buffer (pH 6.0). The tissue section was stained with ARG64937 anti-PP2A / PPP2R4 antibody at 3.75 µg/ml dilution followed by AP-staining.