

## ARG64968 anti-HMOX2 antibody

Package: 100 µg  
Store at: -20°C

### Summary

Product Description	Goat Polyclonal antibody recognizes HMOX2
Tested Reactivity	Hu
Predict Reactivity	Ms, Cow
Tested Application	IHC-P, WB
Specificity	Reported variants represent identical protein: NP_002125.3, NP_001120676.1, NP_001120678.1, NP_001120677.1
Host	Goat
Clonality	Polyclonal
Isotype	IgG
Target Name	HMOX2
Species	Human
Immunogen	C-DQAGSTLARETLED
Conjugation	Un-conjugated
Alternate Names	Heme oxygenase 2; HO-2; EC 1.14.99.3

### Application Instructions

Application table	Application	Dilution
	IHC-P	2 - 4 µg/ml
	WB	0.3 - 1 µg/ml
Application Note	IHC-P: Antigen Retrieval: Steam tissue section in Citrate buffer (pH 6.0). WB: Recommend incubate at RT for 1h. * The dilutions indicate recommended starting dilutions and the optimal dilutions or concentrations should be determined by the scientist.	

### Properties

Form	Liquid
Purification	Purified from goat serum by antigen affinity chromatography.
Buffer	Tris saline (pH 7.3), 0.02% Sodium azide and 0.5% BSA.
Preservative	0.02% Sodium azide
Stabilizer	0.5% BSA
Concentration	0.5 mg/ml
Storage instruction	For continuous use, store undiluted antibody at 2-8°C for up to a week. For long-term storage, aliquot and store at -20°C or below. Storage in frost free freezers is not recommended. Avoid repeated

freeze/thaw cycles. Suggest spin the vial prior to opening. The antibody solution should be gently mixed before use.

Note

For laboratory research only, not for drug, diagnostic or other use.

## Bioinformation

Database links

[GeneID: 3163 Human](#)

[Swiss-port # P30519 Human](#)

Background

Heme oxygenase, an essential enzyme in heme catabolism, cleaves heme to form biliverdin, which is subsequently converted to bilirubin by biliverdin reductase, and carbon monoxide, a putative neurotransmitter. Heme oxygenase activity is induced by its substrate heme and by various nonheme substances. Heme oxygenase occurs as 2 isozymes, an inducible heme oxygenase-1 and a constitutive heme oxygenase-2. HMOX1 and HMOX2 belong to the heme oxygenase family. Alternative splice variants encoding the same protein have been identified at this locus. [provided by RefSeq, Jul 2008]

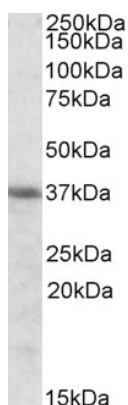
Research Area

Cancer antibody; Cell Biology and Cellular Response antibody; Metabolism antibody

Calculated Mw

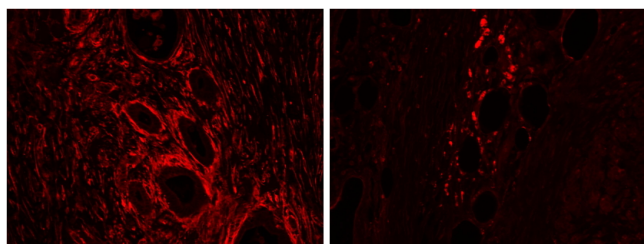
36 kDa

## Images



ARG64968 anti-HMOX2 antibody WB image

Western Blot: K562 cell lysate (35 µg protein in RIPA buffer) stained with ARG64968 anti-HMOX2 antibody at 0.3 µg/ml dilution.



ARG64968 anti-HMOX2 antibody IHC-P image

Immunohistochemistry: paraffin embedded Human Pancreas: cancer (left), adjacent to cancer (right). (Steamed antigen retrieval with citrate buffer pH 6, Alexa594-staining. stained with ARG64968 anti-HMOX2 antibody at 2 µg/ml dilution followed by